

Goodwood Ave

CATTERICK GARRISON

LOVE PROPERTY

LOVE THE JOURNEY



Arriving home...

Situated in the heart of the Garrison, this brilliant location offers the perfect setting for enjoying life. With a welcoming feel, you'll find everything you need right on your doorstep. Local shops, supermarkets, and essential amenities are just a short walk away, making daily errands easy and convenient. Families will appreciate the schools nearby, providing education options for children of all ages. For those who commute, the A1 is only a short drive away, ensuring quick and easy access to surrounding towns and cities.

This fantastic end of terrace home offers an abundance of space for a growing family.

As you step inside, the ground floor is designed for practicality and comfort. The welcoming hallway provides the perfect spot to remove coats and shoes, keeping the rest of the home tidy. To the right, there is a conveniently located WC, ideal for guests and day-to-day use.

Heading to the left, you'll find the living room, which comfortably accommodates a couple of sofas. This area serves as a cosy place, perfect for relaxing with the family or entertaining friends.

Toward the back of the house is the kitchen/diner, which features an integral oven and gas hob, ensuring that meal preparation is a breeze. The dining area is a bright and inviting space to enjoy sunny mornings or unwind with a coffee in hand while overlooking the garden.





Time for bed...

Upstairs, this home offers three well-proportioned bedrooms, catering to a variety of needs. The main bedroom is a spacious room, complete with its own en-suite shower room. This room is perfect for unwinding after a long day.

The second bedroom is another generous double room, ideal for guests, teenagers, or as a versatile space to suit your lifestyle.

The third bedroom is a cosy single room, perfect for another bedroom, a home office, or a creative space.

Completing the upstairs layout is the family bathroom, featuring a full-sized bath, making it an excellent space for relaxing soaks or catering to the needs of a busy household.

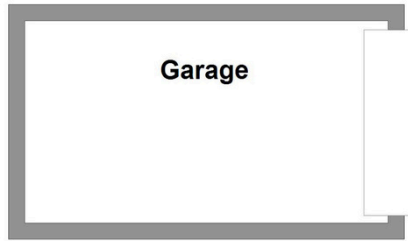




Head outside...

The back garden is a low-maintenance and practical space, ideal for those who want to enjoy the outdoors without the hassle of extensive upkeep. Featuring a combination of paving and lawn, it's perfect for setting up garden furniture, making it an excellent spot for al fresco dining, entertaining, or simply relaxing in the fresh air. The garden is fully enclosed with fencing, offering privacy and security, ideal for families with children or pets. There is also a gate providing convenient access to the rear of the property and garage, making practical tasks like taking out the bins or bringing in tools seamless.

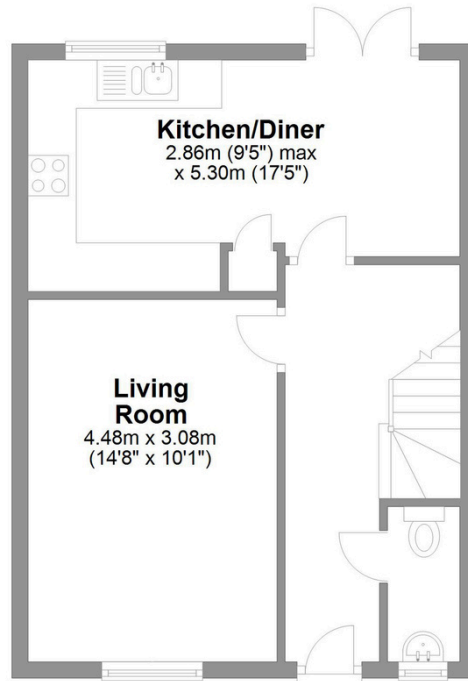




Garage

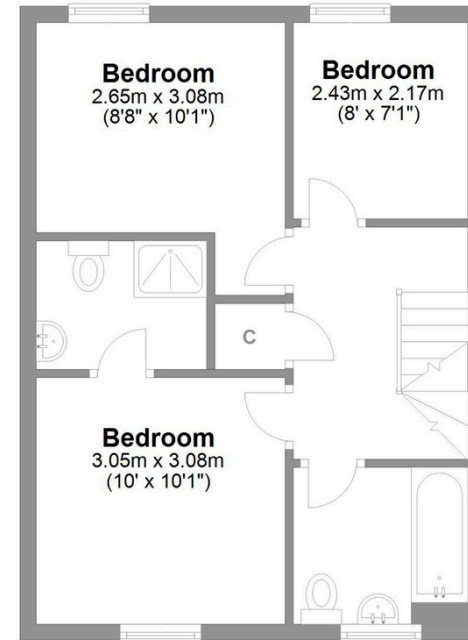
Goodwood Avenue Colburn

Total area: approx. 90.7 sq. metres (976.7 sq. feet)



Kitchen/Diner
2.86m (9'5") max
x 5.30m (17'5")

Living Room
4.48m x 3.08m
(14'8" x 10'1")



Bedroom
2.65m x 3.08m
(8'8" x 10'1")

Bedroom
2.43m x 2.17m
(8' x 7'1")

Bedroom
3.05m x 3.08m
(10' x 10'1")

Ground Floor

Approx. 50.9 sq. metres (548.0 sq. feet)

First Floor

Approx. 39.8 sq. metres (428.8 sq. feet)

LOVE PROPERTY.♥

Whilst every attempt has been made to ensure the accuracy of the floorplans contained here, measurements of doors, windows, rooms and any other items are approximate and no responsibility is taken for any error, omission or mis-statement. This plan is not drawn to scale and is for illustrative purposes only & should be used as such by any prospective purchaser. Created especially for Love Property by Vue3sixty Ltd