

RICHMOND ROAD

CATTERICK GARRISON

LOVE PROPERTY.

LOVE THE JOURNEY



Welcome home...

Set in a convenient position close to the centre of Catterick Garrison, this home is ideally placed for local shops, schools and everyday amenities, making it a practical choice for families and professionals alike.

To the front, the property offers driveway parking for multiple cars, as well as an integral garage to the left.

Inside, the entrance hall leads through to a well-proportioned living room with a feature fireplace, along with a separate dining room providing space for family meals or entertaining. The dining room is currently set up as a studio and is a great work-from-home area.

The kitchen/breakfast room sits to the rear and offers a good range of storage and worktop space, with room for informal dining. Off the garden room is a useful utility and ground-floor shower room, adding valuable practicality to the layout.

The garden room, which provides an additional reception space overlooking the garden and works well as a second sitting area, playroom or home office depending on requirements.





Living space

Upstairs, the first floor offers three bedrooms and a family bathroom. The principal bedroom includes ample storage space, while the remaining two bedrooms are well-suited to children, guests or home working.

The family bathroom is updated with a four-piece suite unit in stylish grey tones.

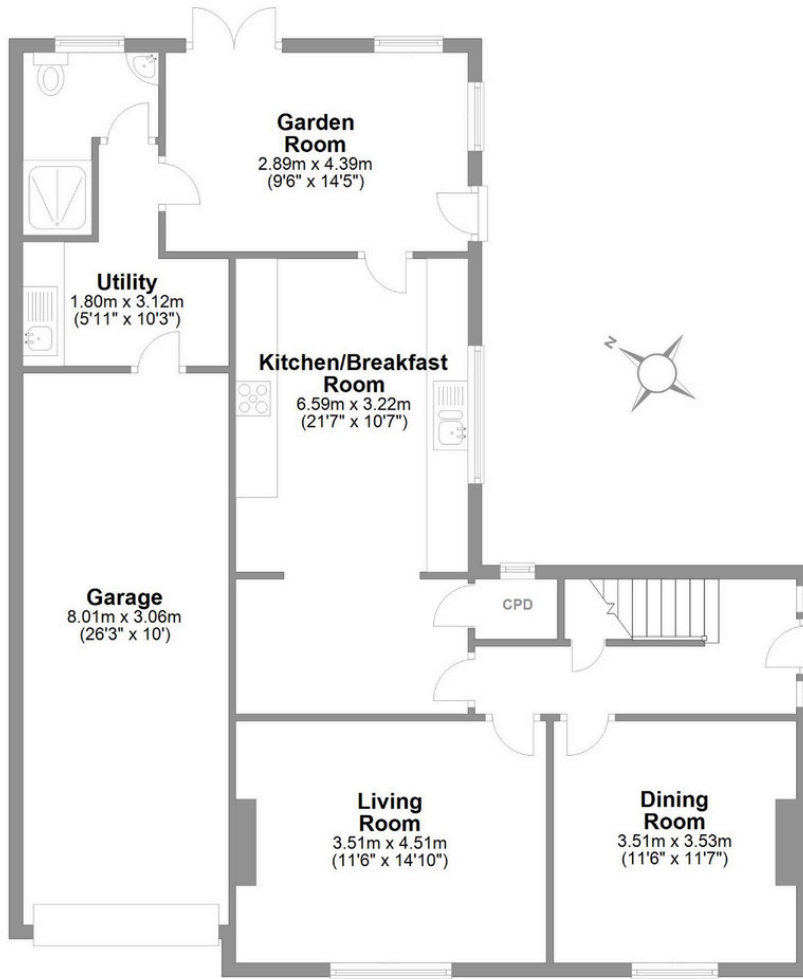


Outside...

Externally, the spacious rear garden provides a patio area where you can sit out and enjoy the warmer months, with room for outdoor dining and family use. The lawn area is perfect for family activities, gardening, and is all enclosed, so it's a safe space for children and pets.

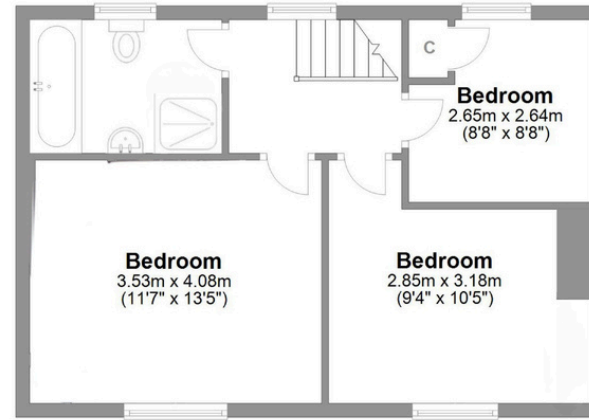
Overall, this is a well-laid-out home in a strong location, offering flexible living space, useful extras including a garage and utility, and easy access to the amenities of Catterick Garrison.





Ground Floor

Approx. 110.2 sq. metres (1186.5 sq. feet)



First Floor

Approx. 44.3 sq. metres (477.0 sq. feet)

Richmond Road Catterick Garrison

Total area: approx. 154.5 sq. metres (1663.5 sq. feet)

LOVE PROPERTY

Whilst every attempt has been made to ensure the accuracy of the floorplans contained here, measurements of doors, windows, rooms and any other items are approximate and no responsibility is taken for any error, omission or mis-statement. This plan is not drawn to scale and is for illustrative purposes only & should be used as such by any prospective purchaser. Created especially for Love Property by Vue3sixty Ltd