

SOMERSET CLOSE

CATTERICK GARRISON

LOVE PROPERTY. 

LOVE THE JOURNEY



Welcome home...

Somerset Close is well positioned within easy walking distance of local shops, schools and everyday amenities, making day-to-day life refreshingly straightforward. With convenient access to the A1 and excellent links towards the Yorkshire Dales, the location suits both commuters and those who enjoy escaping to the countryside. This brick-built home is offered chain-free and would appeal to smaller families, downsizers or investors seeking a practical and well-located property.

On entering the property, a small hallway leads through to the living room, a comfortable and well-proportioned space. Beyond this sits the kitchen/dining room, offering ample room for everyday dining and direct access out to the rear garden, ideal for a low-maintenance outdoor space.





First Floor...

On the first floor, there are two bedrooms, comprising a double room and a generous single, both served by the family bathroom. The bathroom is fitted with a bath and overhead shower, completing the accommodation in a layout that is straightforward, functional and easy to live with.

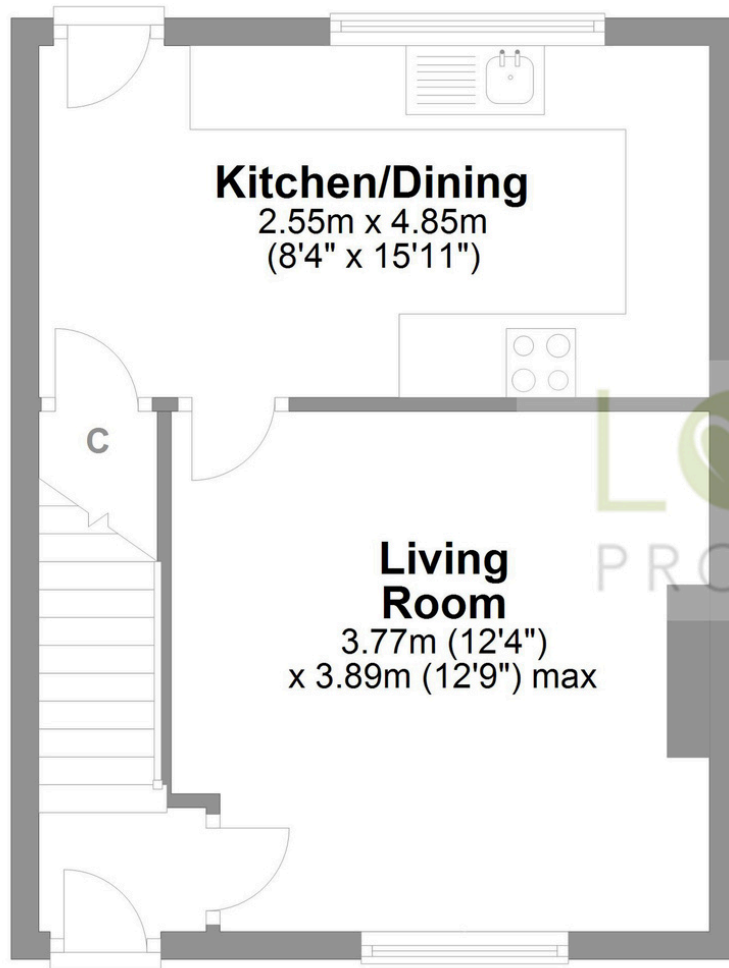
Finer Details...

Postcode: DL9 3HE
Freehold
Council Tax Band: A
EPC Rating: D
Brick Built
Gas Central Heating
Valid EICR until 2029

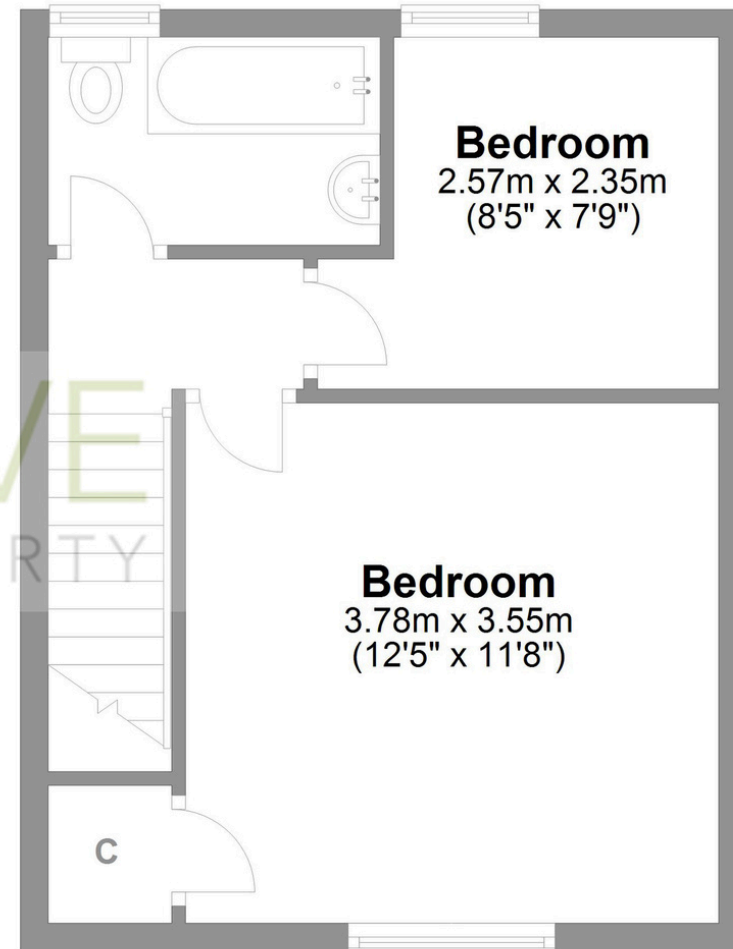


Somerset Close Catterick Garrison

Total area: approx. 61.2 sq. metres (658.3 sq. feet)



Ground Floor



First Floor

Whilst every attempt has been made to ensure the accuracy of the floorplans contained here, measurements of doors, windows, rooms and any other items are approximate and no responsibility is taken for any error, omission or mis-statement. This plan is not drawn to scale and is for illustrative purposes only & should be used as such by any prospective purchaser. Created especially for Love Property by Vue3sixty Ltd