

The background features a stylized, minimalist illustration of a tree with several circular canopies and vertical trunks. A small heart shape is positioned in the upper right corner. The entire graphic is rendered in a light, muted brown color against a solid, slightly darker brown background.

TREVOR HOUSE

LEYBURN

Leyburn, North Yorkshire

Leyburn is a cobbled market town in North Yorkshire, on the edge of the Yorkshire Dales. It has a good range of everyday amenities, including shops, pubs, cafés, a primary and secondary school, and a weekly market, plus the well-known Tennants auction house. The town is popular for its access to walking and cycling in Wensleydale, with scenic spots like the Leyburn Shawl nearby. Larger services such as hospitals and rail links are found in nearby Northallerton and Richmond.





Welcome home...

This beautifully renovated five-bedroom Grade II listed detached home with garage, driveway, and landscaped gardens sits right in the heart of Leyburn, one of North Yorkshire's most sought-after market towns. Offering generous proportions, elegant interiors, and a seamless mix of character with modern tweaks, it's an ideal home for families or anyone seeking refined living within walking distance of shops, cafés, and scenic Dales walks.









Ground floor...

Behind its handsome stone façade lies a home of impressive quality and comfort. The interior has been comprehensively renovated to a superb standard, combining the character of a listed property with stylish contemporary finishes. The welcoming hallway features panelling and polished tiled flooring, leading through to a series of spacious reception rooms. The sitting and dining rooms retain classic proportions and original details, complemented by tasteful décor and generous natural light.

At the rear, the showpiece kitchen is a statement of modern design- with sleek cabinetry, integrated appliances, a large island with breakfast bar, and dining space overlooking the garden. A snug and utility room complete the ground floor layout, providing both comfort and practicality for family life.





Time for bed...

Upstairs, five spacious bedrooms are beautifully presented, including a luxurious principal suite with dressing area and en-suite. The remaining bedrooms are all of good size and served by high-spec family bathrooms and shower rooms.





Outside...

The home sits within attractive front and rear gardens, thoughtfully landscaped with lawns, patio areas, and mature planting, including fruit trees. A private driveway provides ample parking and leads to a detached garage with an adjoining garden store.

Finer Details...

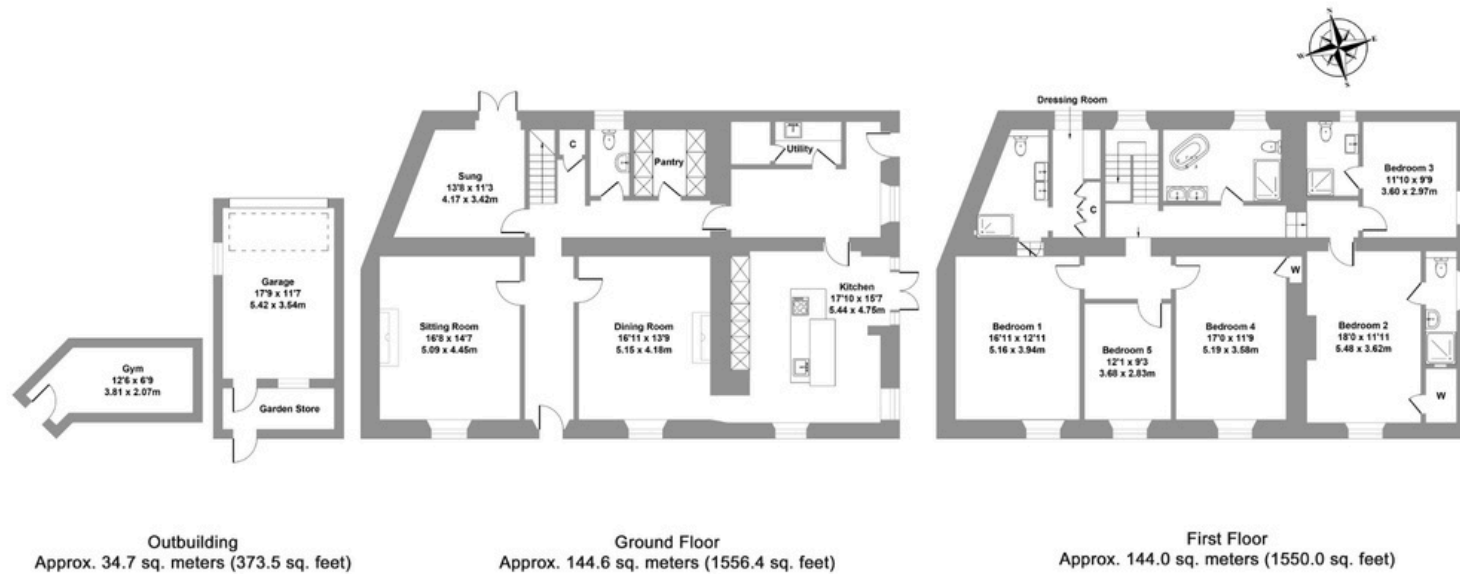
Postcode: DL8 5DN
Freehold
Council Tax Band: G
EPC Rating: E
Gas Central Heating





Trevor House, Leyburn

Total area approx. 323.3 sq. meters (3479.9 sq. feet)



LOVE PROPERTY.

Whilst every attempt has been made to ensure the accuracy of the floorplans contained here, measurements of doors, windows, rooms and any other items are approximate and no responsibility is taken for any error, omission or mis-statement. This plan is not drawn to scale and is for illustrative purposes only & should be used as such by any prospective purchaser. Created especially for H&H Land by Vue3sixty Ltd