

Flat 5 Harbour Lights, BH15



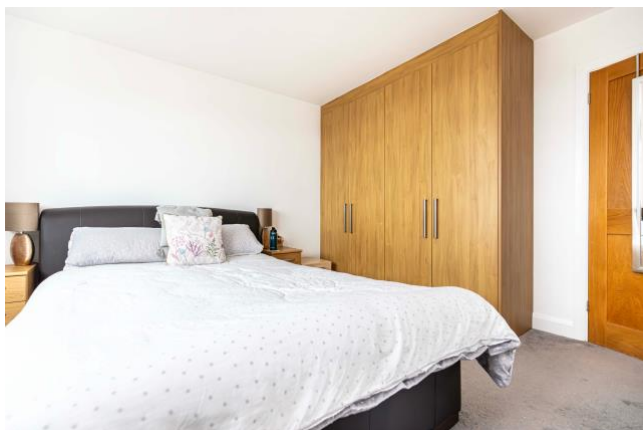
01202 721999 katiefoxea.co.uk

Katie  Fox
ESTATE AGENTS

What it's got.

This top floor two double bedroom apartment has stunning views over Poole Harbour. It features two double bedrooms, an open plan lounge/ diner that wraps around to the kitchen, with plenty of storage. There is a bright bathroom with bath and overhead shower and a separate W/C. In the entrance there is also a large cloak cupboard. The large south facing balcony is the perfect place to unwind and take in the breath-taking views.



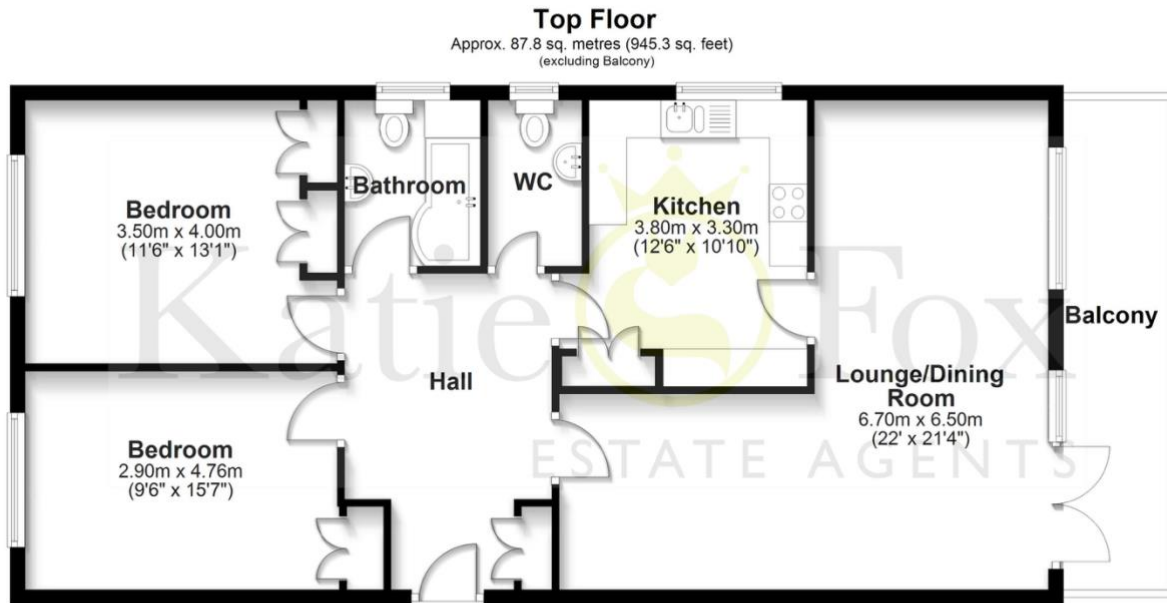


What the owner says.

“The views over the harbour and Purbecks are amazing. The balcony has sun for most of the day and is large enough to enjoy sitting on. We have enjoyed owning the flat for 13 years, with its great location for easy access to Poole, buses to Bournemouth or walks to Ashley Cross for nights out, visits to Poole Park or the Quay. It is a top floor flat in a small block with a great position.”

Where it is.

Situated on the sought-after Longfleet Road of Poole, this location offers excellent access to the town centre, hospital, local schools, transport links and coastal attractions, making it a popular and convenient place to live.



Total area: approx. 87.8 sq. metres (945.3 sq. feet)

Bournemouth Energy Floor Plans are provided for illustration/identification purposes only. Not drawn to scale, unless stated and accept no responsibility for any error, omission or mis-statement. Dimensions shown are to the nearest 7.5 cm / 3 inches. Total approx area shown on the plan may include any external terraces, balconies and other external areas. To find out more about Bournemouth Energy please visit www.bournemouthenergy.co.uk (Tel: 01202 556006)

Plan produced using PlanUp.

Technical bits.

- Pets permitted
- off- road parking
- Large modern balcony
- Two double bedrooms
- Garage
- Long lease
- EPC – C
- Short distance to Poole Town Centre and Poole Park

DISCLAIMER: Please note if any measurements are quoted these are approximate and for guidance only. The fixtures, fittings and appliances have not been tested and therefore no guarantees can be made they are working order. The floorplan/EPC has been provided by a third party and therefore we cannot be responsible for the accuracy. You are advised to contact the local authority for details of the council tax. Photographs produced are for general purpose only and any it cannot be assumed items shown are included on the sale. These particulars are believed to be correct but their accuracy cannot be guaranteed and they do not constitute an offer or form part of any contract. Solicitors are specifically requested to verify the details of our sales particulars in the pre-contract enquiries, in particular the price, local and other searches, in the event of a sale.