



MAXWELLS



**5 Cheviot Way, Banbury, Oxfordshire. OX16 1YB**  
**Guide Price £267,500 - Freehold**



## PROPERTY DESCRIPTION

Located on a quiet cul de sac at the top of Hardwick is this well presented and extended bungalow, offering two bedrooms, a large sitting room, dining room and fitted kitchen. The bungalow is fitted with gas central heating, double glazing and is offered for sale with no onward chain.

The bungalow is set back from the road with a pathway leading to the front door and a small, easy to maintain front garden. From the entrance hallway are doors leading to the sitting room, both bedrooms and the shower room. The sitting room is a good sized area with plenty of space for sofas and a door leading into the kitchen. An archway leads into a dining room with double glazed windows overlooking the garden. The kitchen is fitted with a modern range of cupboards and worktops plus a selection of fitted appliances and a door leading into the conservatory which also offers plumbing for a washing machine.

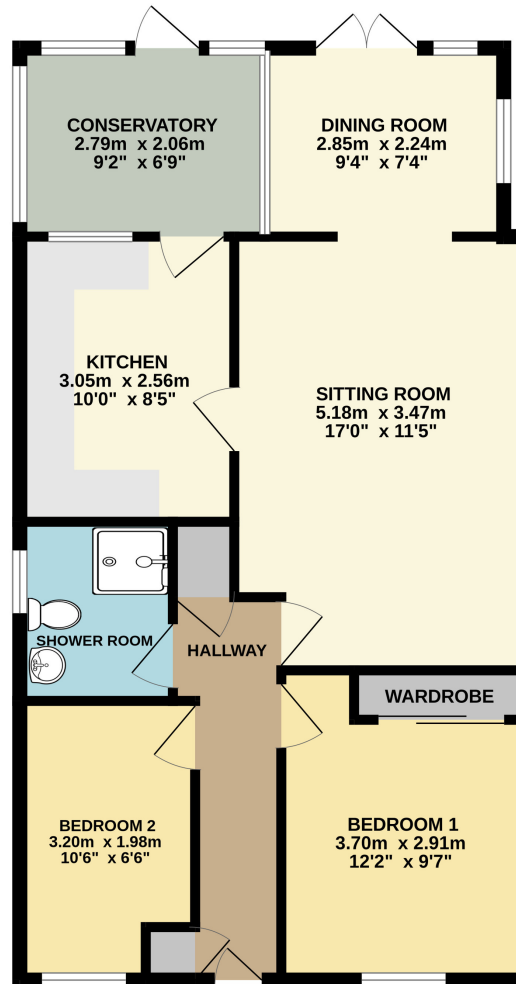
Bedroom one is a generous double with fitted wardrobes and a double glazed window while bedroom two is a good sized single room also benefitting from fitted wardrobes. The shower room is fitted with a white three piece suite comprising an enclosed shower, wash basin and low level w.c. plus tiling to all splash prone areas and a double glazed window.

The rear garden is laid mainly to lawn with a patio area adjacent to the rear of the property, it is fully enclosed and there is a pathway running along the side providing pedestrian access to the front of the bungalow.

## POINTS OF INTEREST

- NO ONWARD CHAIN
- Two Bedrooms with Fitted Wardrobes
- Gas Central Heating
- Extended Bungalow
- Sitting Room
- Dining Room
- Fitted Kitchen
- Conservatory
- Double Glazed
- Enclosed Rear Garden

GROUND FLOOR  
66.5 sq.m. (716 sq.ft.) approx.



TOTAL FLOOR AREA : 66.5 sq.m. (716 sq.ft.) approx.

Whilst every attempt has been made to ensure the accuracy of the floor plan contained here, measurements of doors, windows, rooms and any other items are approximate and no responsibility is taken for any error, omission or mis-statement. This plan is for illustrative purposes only and should be used as such by any prospective purchaser.  
Made with Metropix ©2026

