



27a Redcliffe Gardens, Ilford

Ilford

Guide Price £400,000 - £450,000

BRADLEY
BOWDEN

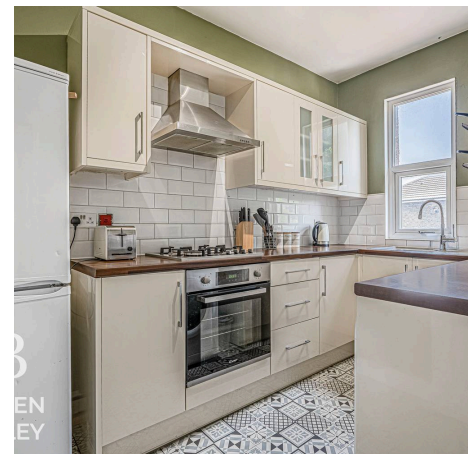
27a Redcliffe Gardens

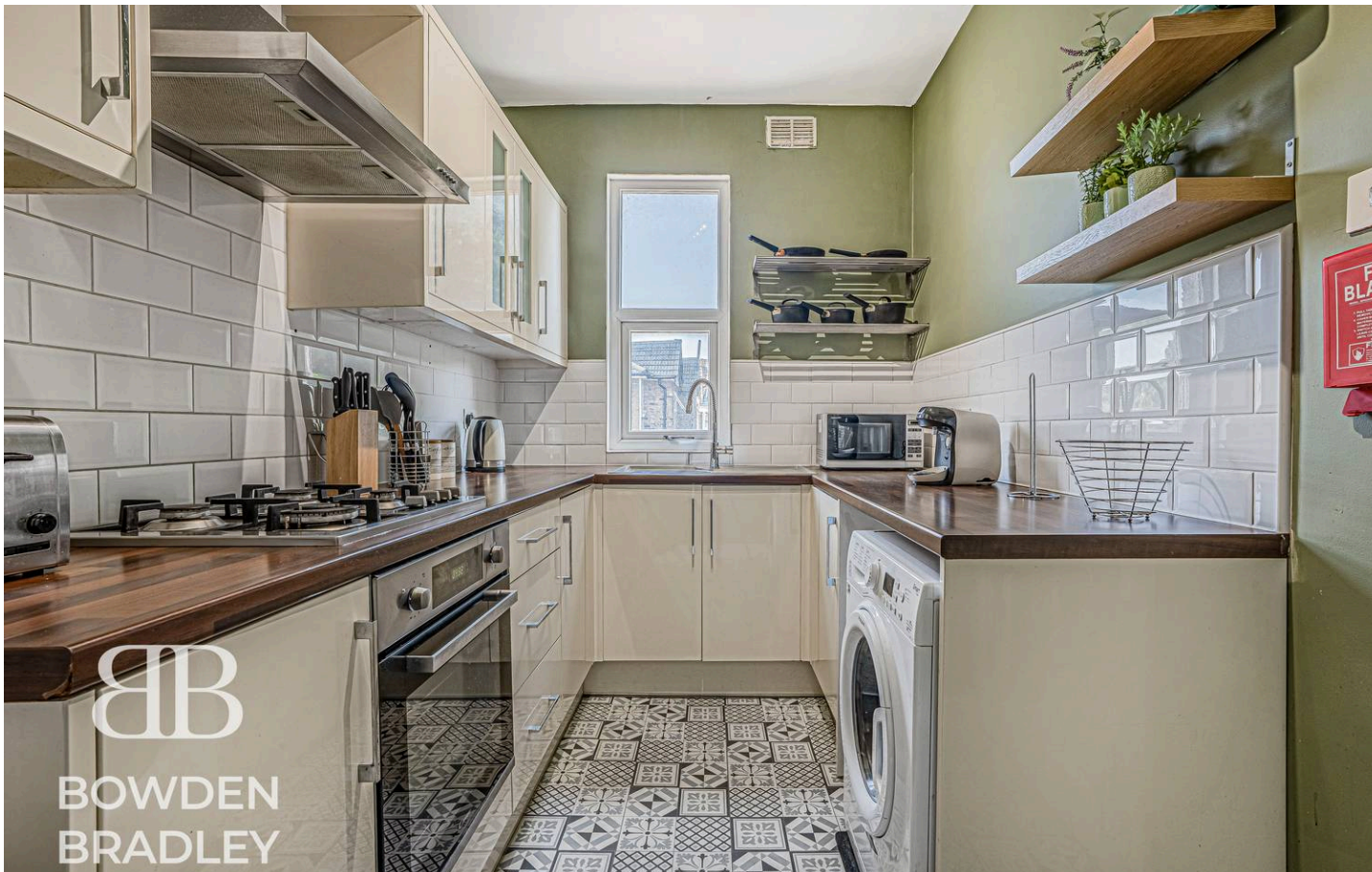
Ilford

Council Tax band: TBD

Tenure: Share of Freehold

- Guide Price £400,000 - £450,000
- 2 Bedroom Maisonette
- Immaculate Condition Throughout
- Off Street Parking
- Very Sought After Pocket of Ilford
- Valentines Park Nearby
- Close Proximity To Gants Hill & Ilford Station
- Outstanding Schools In Close Proximity
- Perfect For First Time Buyers





Living Room

15' 2" x 16' 8" (4.62m x 5.08m)

Kitchen

11' 2" x 6' 7" (3.40m x 2.01m)

Bedroom

15' 2" x 12' 7" (4.62m x 3.84m)

Bedroom

11' 2" x 11' 2" (3.40m x 3.40m)

Bathroom

7' 9" x 4' 10" (2.36m x 1.47m)

B
BOWDEN
BRADLEY



B
VDEN
DLEY



B
VDEN
DLEY

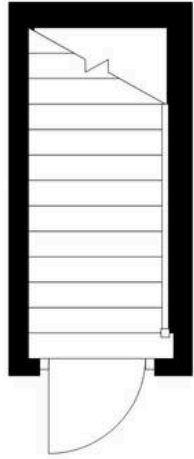


First Floor

Approx. 71.1 sq. metres (765.3 sq. feet)

Ground Floor

Approx. 2.6 sq. metres (28.5 sq. feet)



Total area: approx. 73.7 sq. metres (793.8 sq. feet)



Bowden Bradley

Bansal House, Bracken Industrial Estate, 185 Forest Road - IG6 3HX

02080593593 · info@bowdenbradley.co.uk · bowdenbradley.co.uk/