



Flat 41, Parkside Court, 15 Booth Road

London

Guide Price £325,000 - £350,000



Flat 41

Parkside Court, London

Modern one-bedroom flat near Thames Barrier with open-plan living, balcony, concierge, and excellent transport links. Ideal for professionals or couples seeking stylish city living.

Council Tax band: C

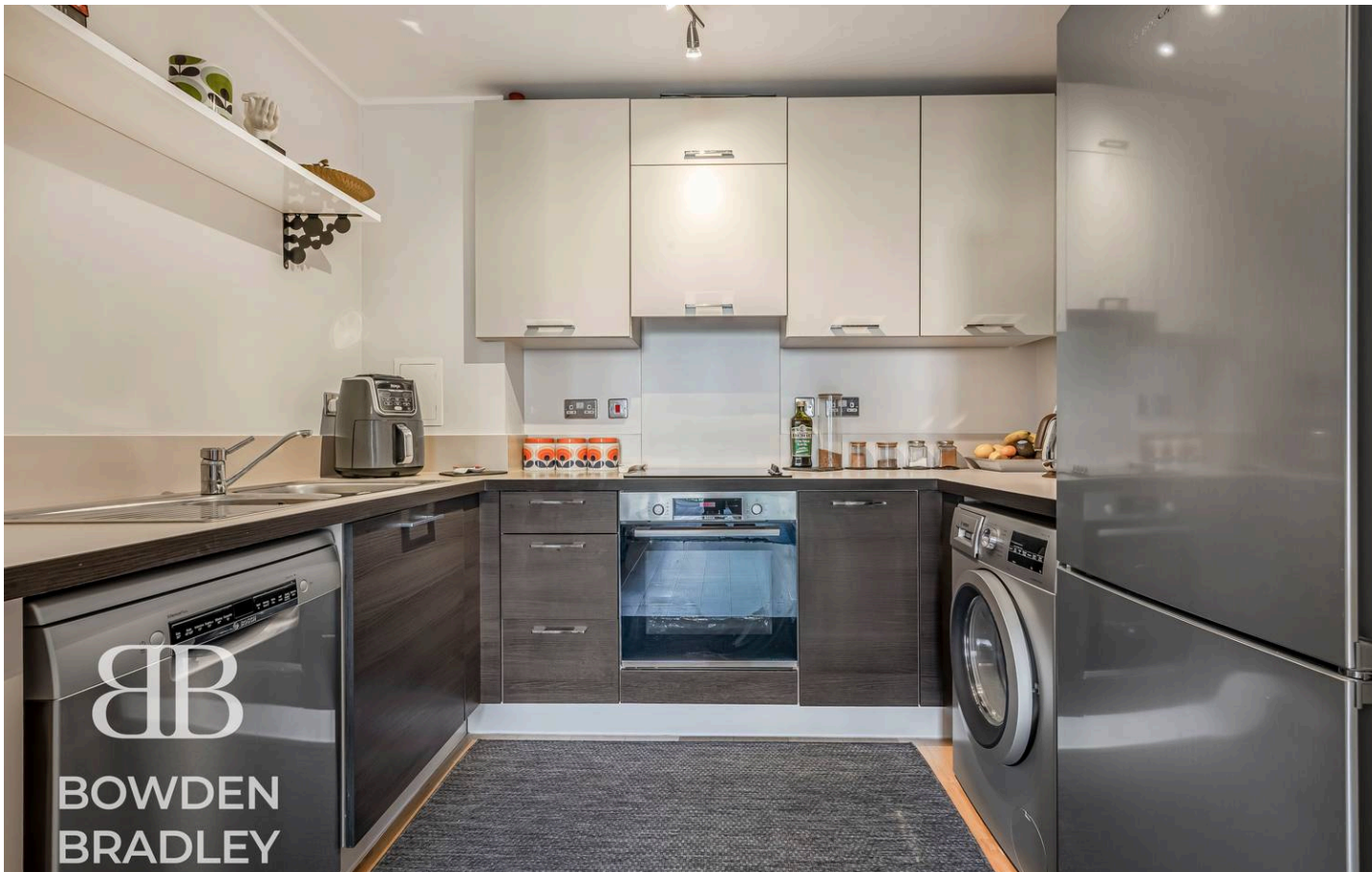
Tenure: Leasehold

EPC Energy Efficiency Rating: B

EPC Environmental Impact Rating: A

- Guide Price £325,000 - £350,000
- Truly Great Location, A Stones Throw From The Thames Barrier
- One Bedroom
- Private Balcony
- Concierge service
- Close to Local Amenities
- 5 Minutes Walk to Pontoon Dock Station (DLR)





Living Room

15' 4" x 10' 4" (4.67m x 3.15m)

Balcony

6' 0" x 9' 1" (1.83m x 2.77m)

Kitchen

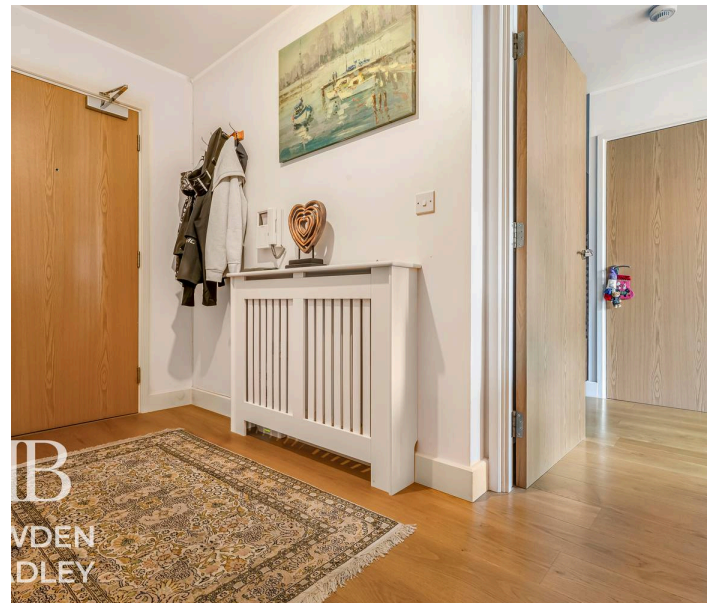
7' 3" x 9' 2" (2.21m x 2.79m)

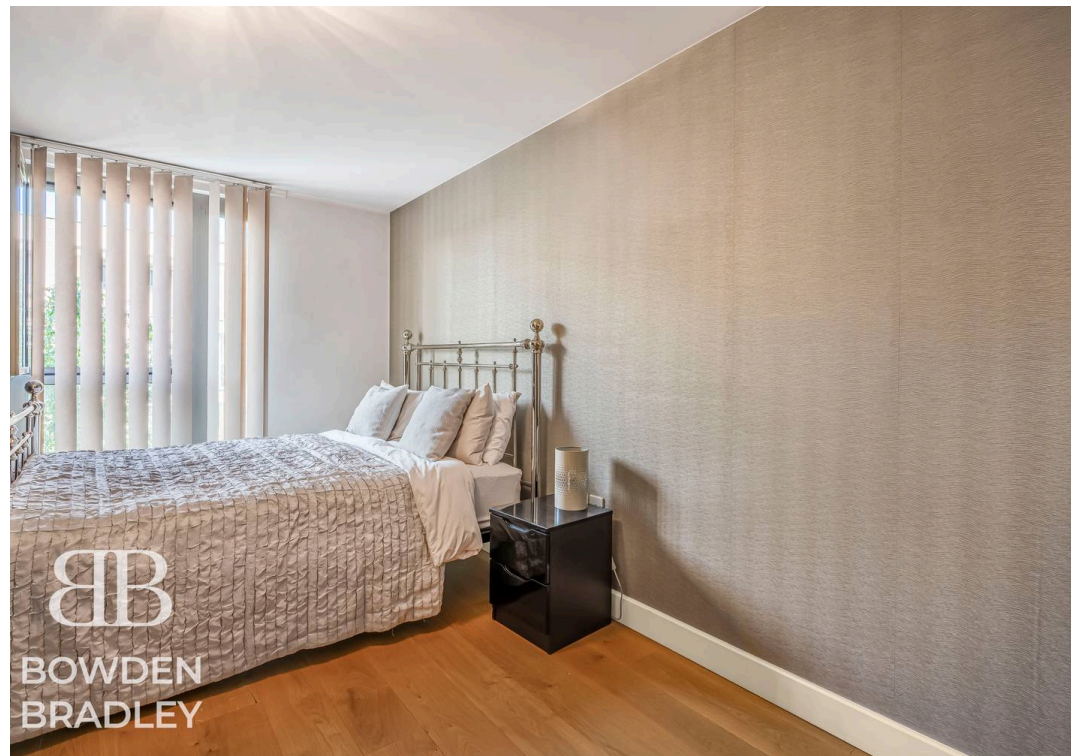
Bathroom

7' 2" x 6' 7" (2.18m x 2.01m)

Bedroom

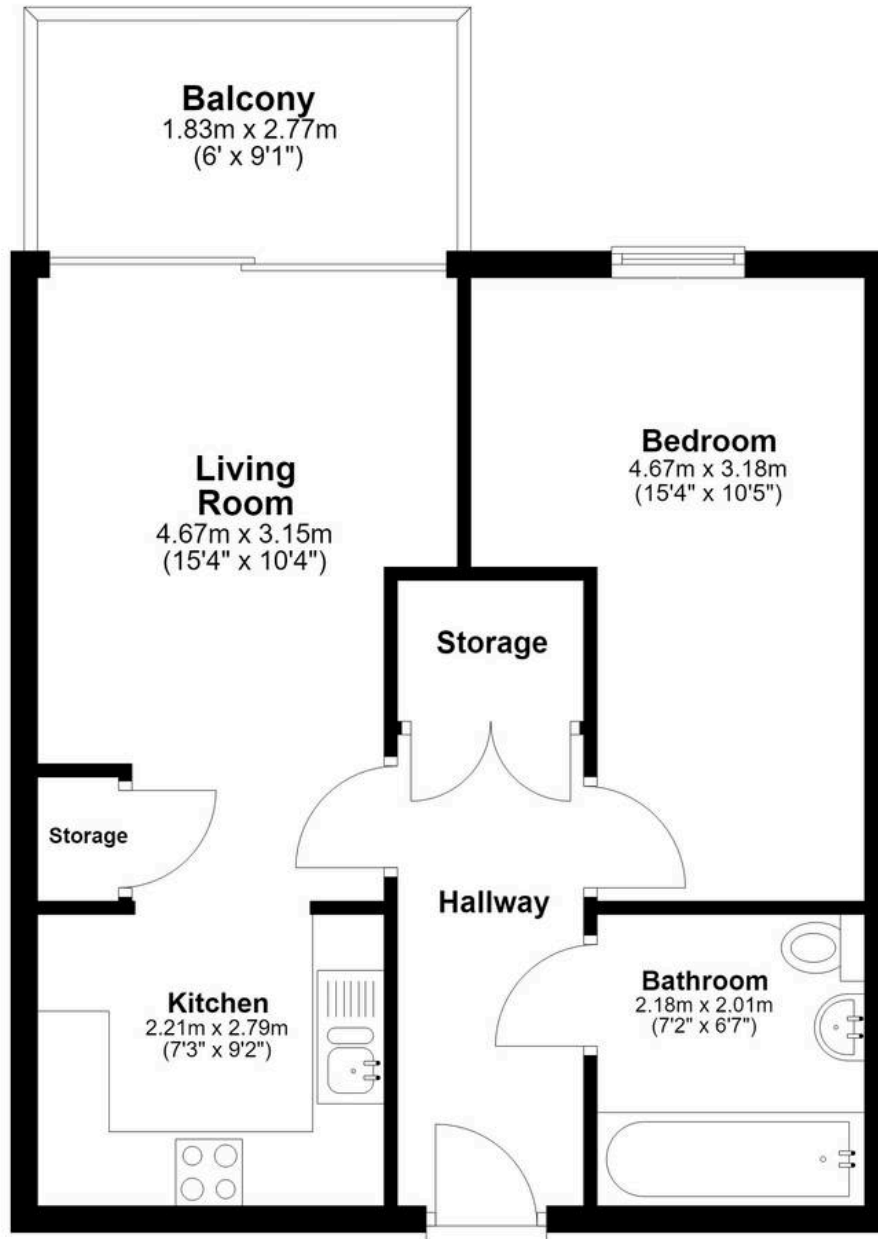
15' 4" x 10' 5" (4.67m x 3.18m)





Third Floor

Approx. 43.6 sq. metres (469.6 sq. feet)
(excluding Balcony)



Total area: approx. 43.6 sq. metres (469.6 sq. feet)



BOWDEN
BRADLEY

Bowden Bradley

Bansal House, Bracken Industrial Estate, 185 Forest Road - IG6 3HX

02080593593 · info@bowdenbradley.co.uk · bowdenbradley.co.uk/