



8 Ash Way, Woodford Green

Woodford Green

£375,000



8 Ash Way

Woodford Green, Woodford Green

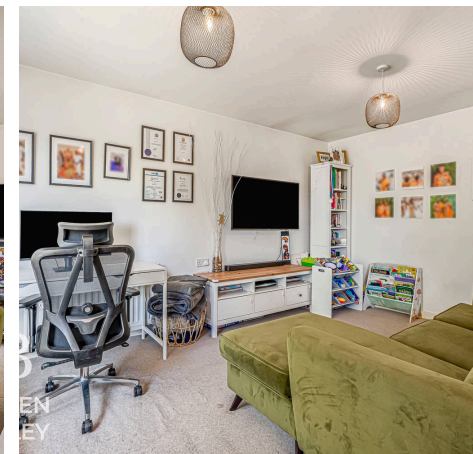
Council Tax band: C

Tenure: Leasehold

EPC Energy Efficiency Rating: B

EPC Environmental Impact Rating:

- 2 Bedroom Apartment
- Sought After Turning Within Woodford Green
- Gated Parking
- Perfect Home For First Time Buyers
- Juliet Balcony
- Approx. 0.9 Mile From South Woodford Station
- Immaculate Condition Throughout
- Communal Gardens
- Plenty Of Amenities Nearby





Reception/Kitchen

16' 0" x 18' 4" (4.88m x 5.59m)

Bedroom

12' 4" x 13' 0" (3.76m x 3.96m)

Shower Room

7' 10" x 2' 10" (2.39m x 0.87m)

Bedroom

16' 5" x 8' 5" (5.00m x 2.57m)

Bathroom

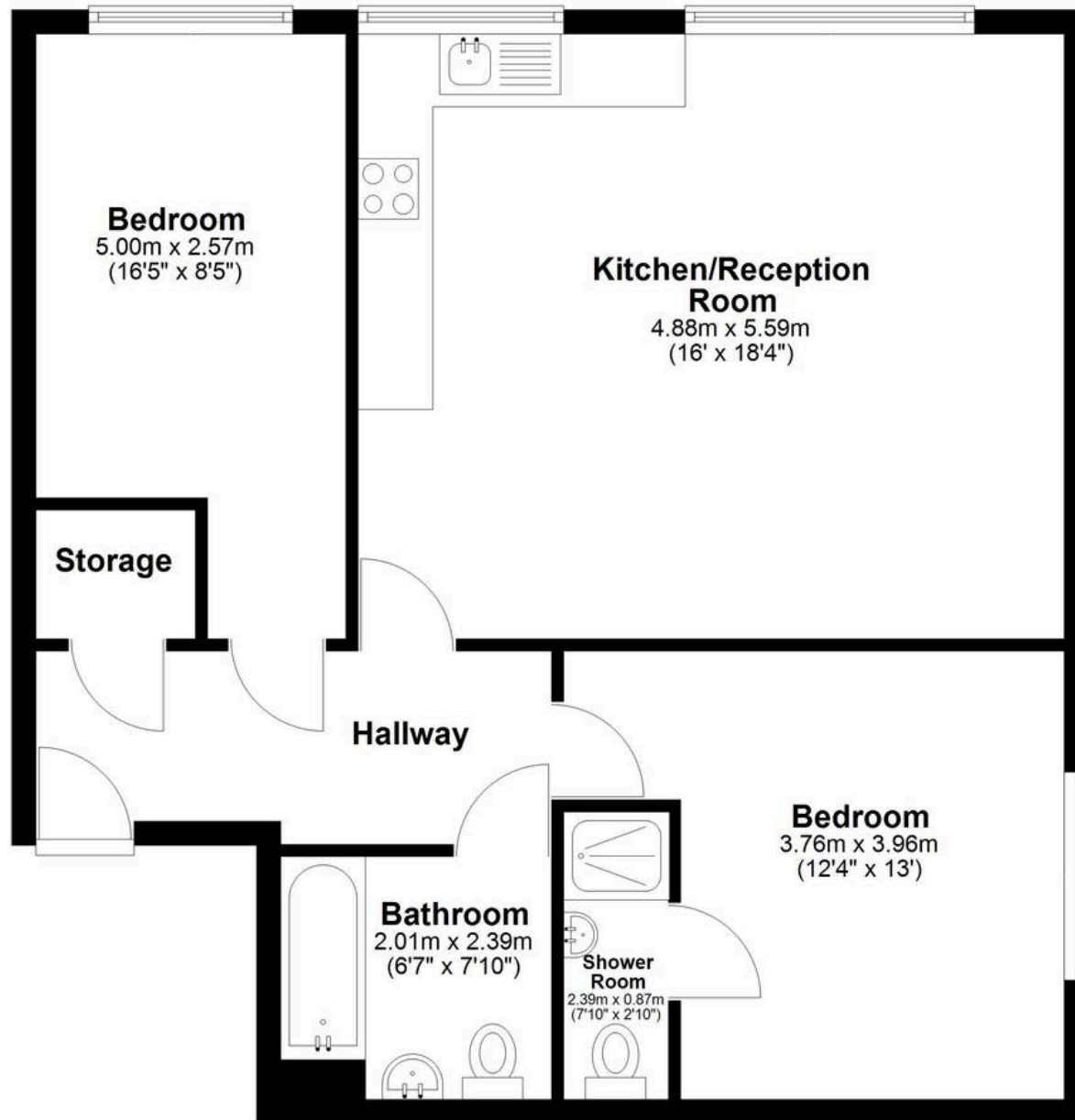
6' 7" x 7' 10" (2.01m x 2.39m)





First Floor

Approx. 68.5 sq. metres (737.1 sq. feet)



Total area: approx. 68.5 sq. metres (737.1 sq. feet)



Bowden Bradley

Bansal House, Bracken Industrial Estate, 185 Forest Road - IG6 3HX

02080593593 · info@bowdenbradley.co.uk · bowdenbradley.co.uk/