



BOWDEN

19 Sylvester Gardens, Hainault

Hainault

Guide Price **£250,000**



B
BOWDEN
BRADLEY

19 Sylvester Gardens

Hainault

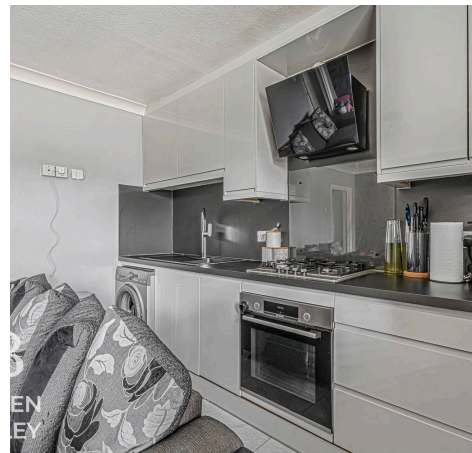
GUIDE PRICE: £250,000 - £260,000. Two Bedroom First Floor Flat - Own Rear Garden - Balcony - Low Service Charges - New Bathroom & Kitchen - Popular...
Council Tax band: B

Tenure: Leasehold

EPC Energy Efficiency Rating: D

EPC Environmental Impact Rating: D

- Guide Price £250,000 - £275,000
- Two Bedroom First Floor Flat
- Sought After Location
- Private Garden
- Own Rear Garden
- New Bathroom & Kitchen
- Balcony
- Off Street Parking
- Low Ground Rent





Front

Kitchen/Lounge

Dimensions: 4.90m x 3.84m (16'1 x 12'7).

Bedroom

Dimensions: 3.86m x 2.79m (12'8 x 9'2).

Bedroom

Dimensions: 3.35m x 2.51m (11 x 8'3).

Bathroom

Dimensions: 2.67m x 1.65m (8'9 x 5'5).

Balcony



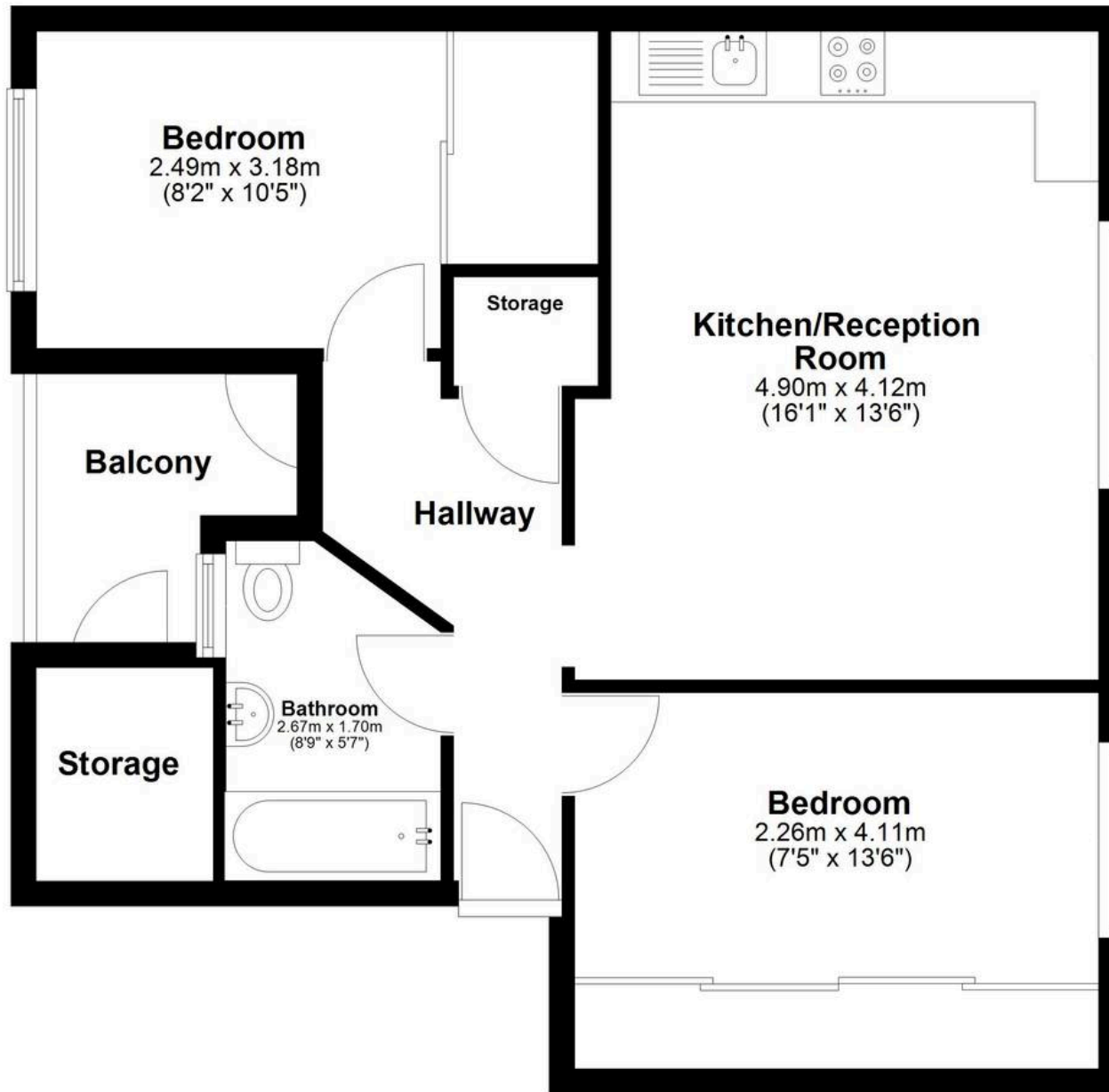
B
VDEN
DLEY

B
VDEN
DLEY



First Floor

Approx. 56.5 sq. metres (608.6 sq. feet)
(excluding Balcony)



Total area: approx. 56.5 sq. metres (608.6 sq. feet)



Bowden Bradley

Bansal House, Bracken Industrial Estate, 185 Forest Road - IG6 3HX

02080593593 · info@bowdenbradley.co.uk · bowdenbradley.co.uk/