



EB

BOWDEN
BRADLEY

42 Beechwood Gardens, Clayhall

Clayhall

Guide Price £700,000



42 Beechwood Gardens

Clayhall

Three Bedroom Family Home - Beal School Catchment - Downstairs Shower Room - Large Extension at the Rear - Amazing 'Woods' Estate Location - Drivew...
Council Tax band: E

Tenure: Freehold

EPC Energy Efficiency Rating: D

EPC Environmental Impact Rating: D

- Guide Price £700,000 - £750,000
- Popular Woods Estate
- 3 Bedroom House
- Off Street Parking
- Large Through Lounge Leading to the Kitchen Diner
- 2 Bathrooms
- Sought After Schools Nearby





Living Room

17' 0" x 13' 4" (5.18m x 4.06m)

Dining Room

12' 9" x 10' 9" (3.89m x 3.28m)

Kitchen

14' 0" x 19' 3" (4.27m x 5.87m)

Utility Room

12' 9" x 8' 6" (3.89m x 2.58m)

Bathroom

7' 5" x 2' 6" (2.26m x 0.76m)

Bedroom

15' 10" x 13' 4" (4.82m x 4.06m)

Bedroom

16' 3" x 13' 4" (4.95m x 4.06m)

Dimensions: 5.03m x 3.30m (16'6 x 10'10).

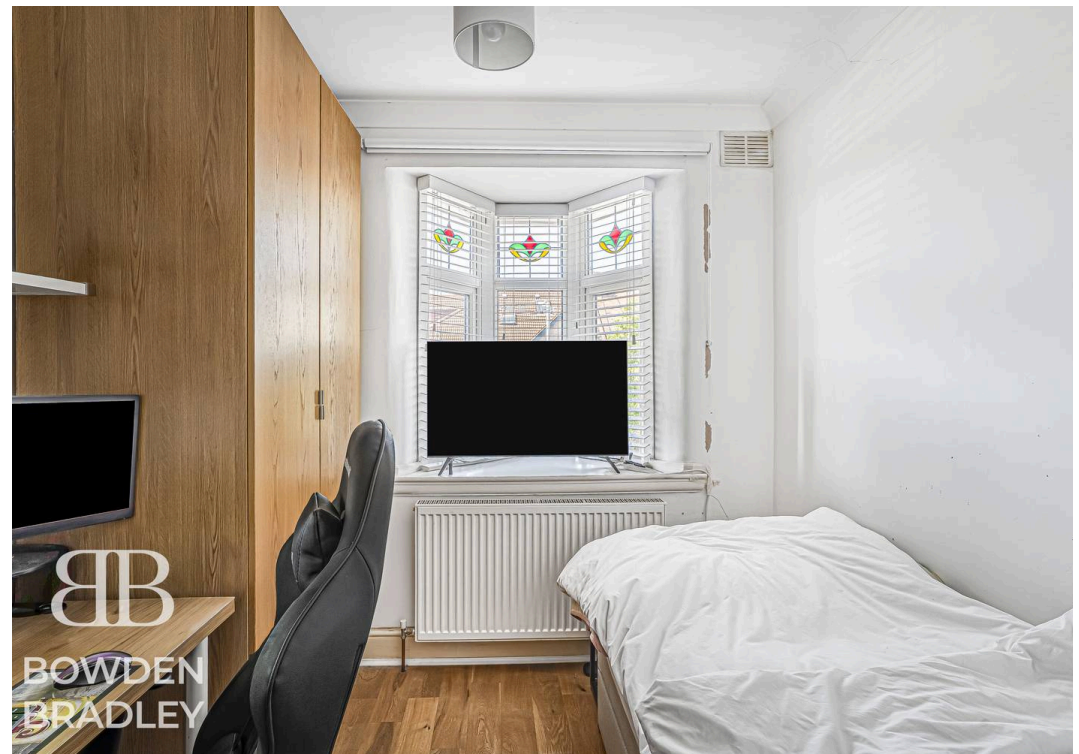
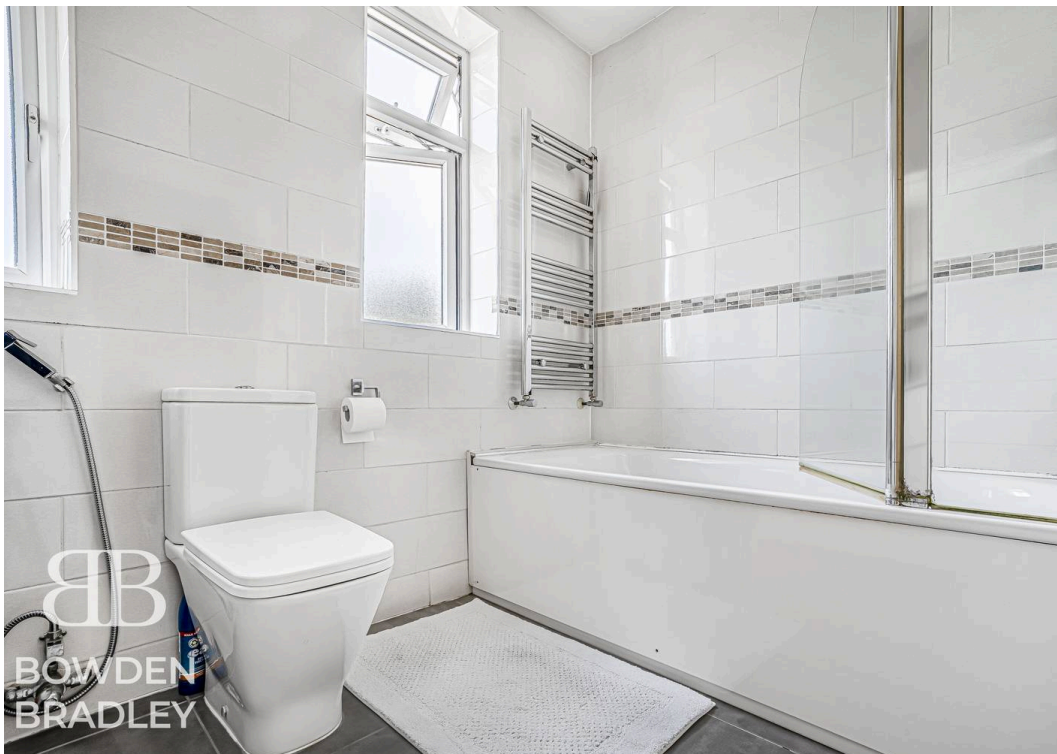
Bedroom

9' 10" x 8' 2" (3.00m x 2.48m)

Bathroom

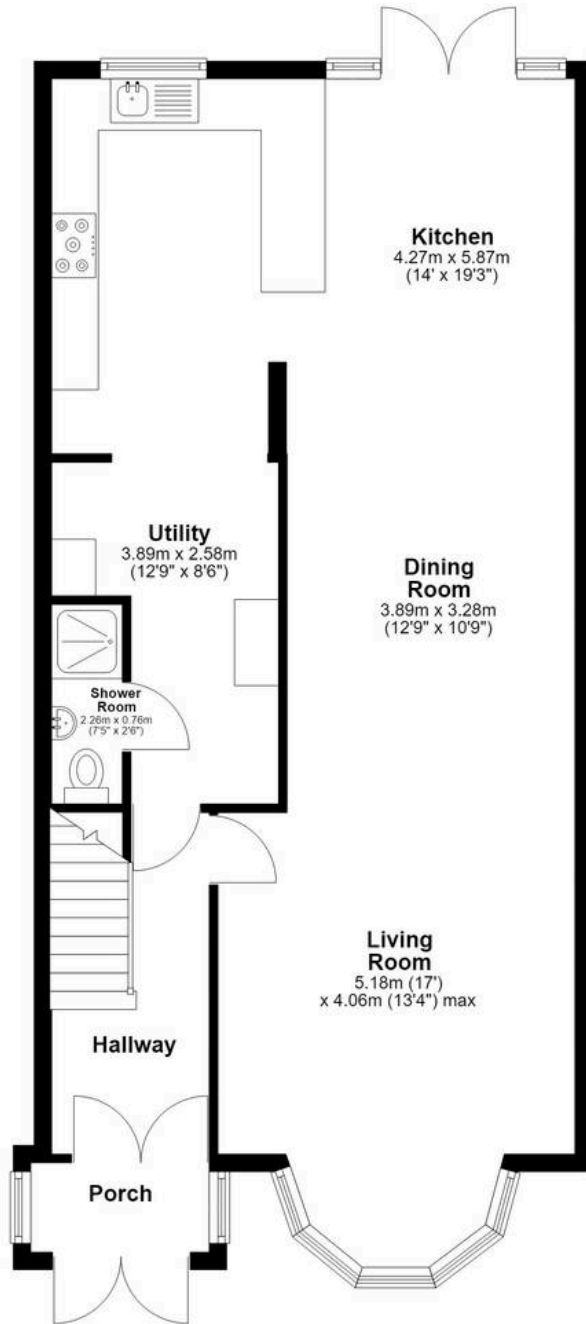
6' 7" x 8' 6" (2.01m x 2.59m)





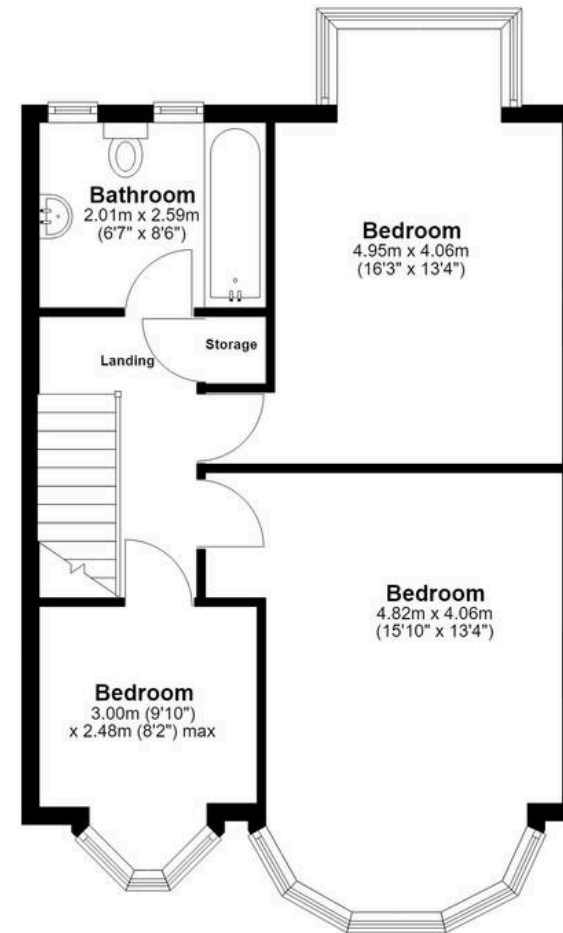
Ground Floor

Approx. 77.6 sq. metres (834.8 sq. feet)



First Floor

Approx. 52.1 sq. metres (561.1 sq. feet)



Total area: approx. 129.7 sq. metres (1395.9 sq. feet)



Bowden Bradley

Bansal House, Bracken Industrial Estate, 185 Forest Road - IG6 3HX

02080593593 · info@bowdenbradley.co.uk · bowdenbradley.co.uk/