



Flat 4, Eddleston Court Riverside Close, Romford

Romford

Guide Price £250,000



Flat 4

Eddleston Court Riverside Close,
Romford

Available Immediately Welcome to this charming two-bedroom apartment located in the desirable Riverside Close, Romford. This well-appointed proper...

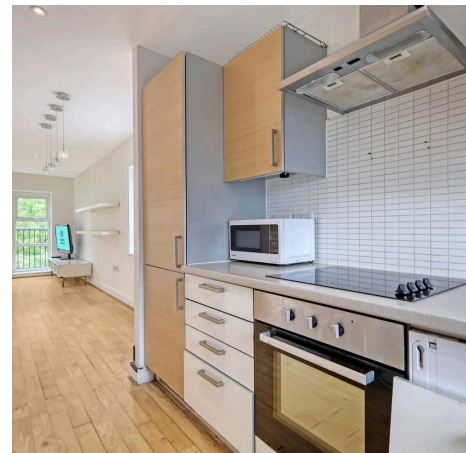
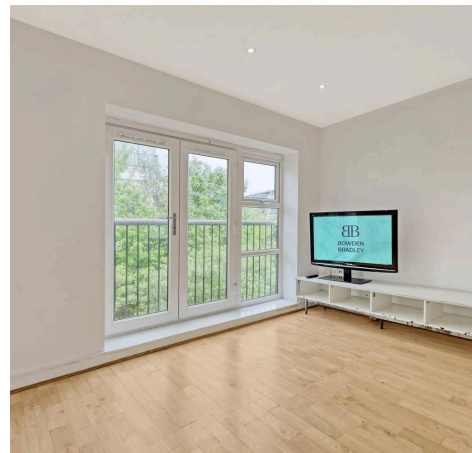
Council Tax band: TBD

Tenure: Leasehold

EPC Energy Efficiency Rating: B

EPC Environmental Impact Rating: C

- Guide Price £250,000 - £275,000
- 2 Bedroom Apartments
- Nearby to Local Shops
- En-suite to Bedroom One
- Allocated Parking
- Close to Romford Station
- Access to a Communal Garden
- Popular Development





Front

Hallway

Bedroom

Dimensions: 3.12 x 2.57 (10'2" x 8'5").

Kitchen

Dimensions: 3.12 x 1.97 (10'2" x 6'5").

Lounge/Dining Room

Dimensions: 6.36 x 3.78 (20'10" x 12'4").

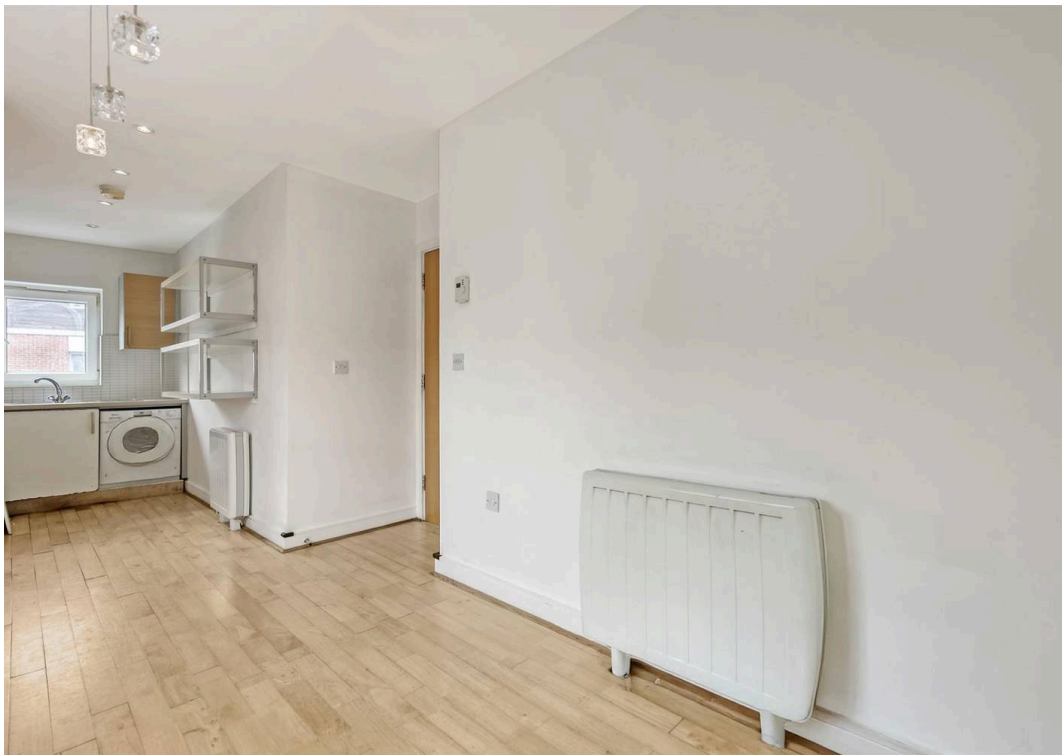
Bathroom

Bedroom

Dimensions: 5.21 x 3.06 (17'1" x 10'0").

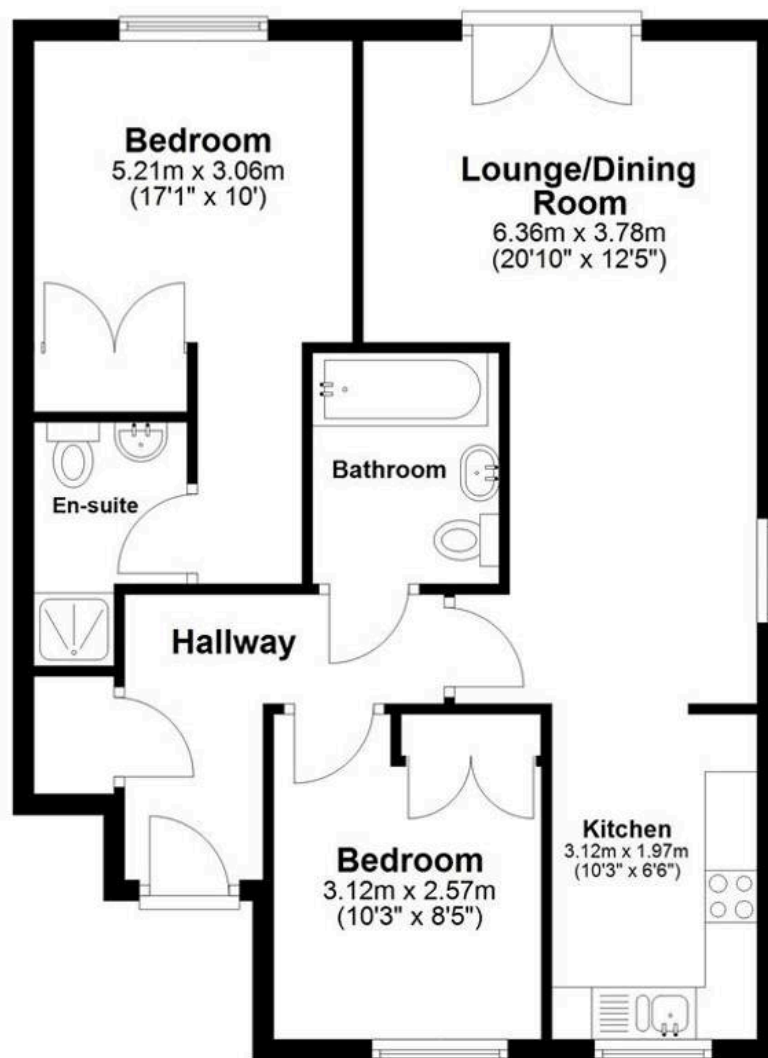
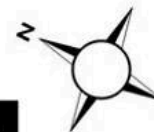
En-suite





First Floor

Approx. 62.2 sq. metres (670.0 sq. feet)



Total area: approx. 62.2 sq. metres (670.0 sq. feet)

This floor plan has been created by a third party and should be used as a general outline for guidance only. Any areas, measurements or distances quoted are approximate and any intending purchaser or lessee should satisfy themselves by inspection, searches, enquiries and/or full survey as to the correctness of each statement. We accept no responsibility or liability for any loss whatsoever that may arise as a result of this plan and the information contained within.

© @modephoto | www.modephoto.co.uk
Plan produced using PlanUp. □

Eddlestone Court



Bowden Bradley

Bansal House, Bracken Industrial Estate, 185 Forest Road - IG6 3HX

02080593593 · info@bowdenbradley.co.uk · bowdenbradley.co.uk/