



6 Copford Close, Woodford Green

Woodford Green

£300,000



## 6 Copford Close

Woodford Green

Council Tax band: B

Tenure: Leasehold

EPC Energy Efficiency Rating: C

EPC Environmental Impact Rating: C

- 2 Bedroom Split Level Apartment
- Ground Floor
- Own Private Patio Garden
- Off Street Parking
- Close To Local Shops & Restaurants
- Recently Decorated
- Within Easy Reach Of Woodford Central Line Station
- Great For First Time Buyers

  
BOWDEN  
BRADLEY





### Reception Room

17' 1" x 10' 2" (5.21m x 3.10m)

### Kitchen

12' 5" x 5' 6" (3.78m x 1.68m)

### Bedroom

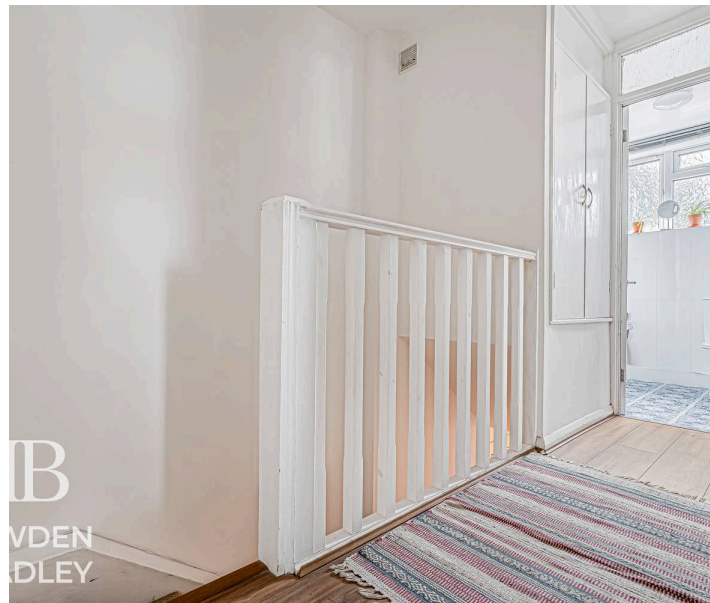
13' 8" x 9' 6" (4.17m x 2.90m)

### Bedroom

13' 8" x 6' 5" (4.17m x 1.96m)

### Bathroom

7' 2" x 5' 5" (2.18m x 1.65m)



**B**  
BOWDEN  
BRADLEY

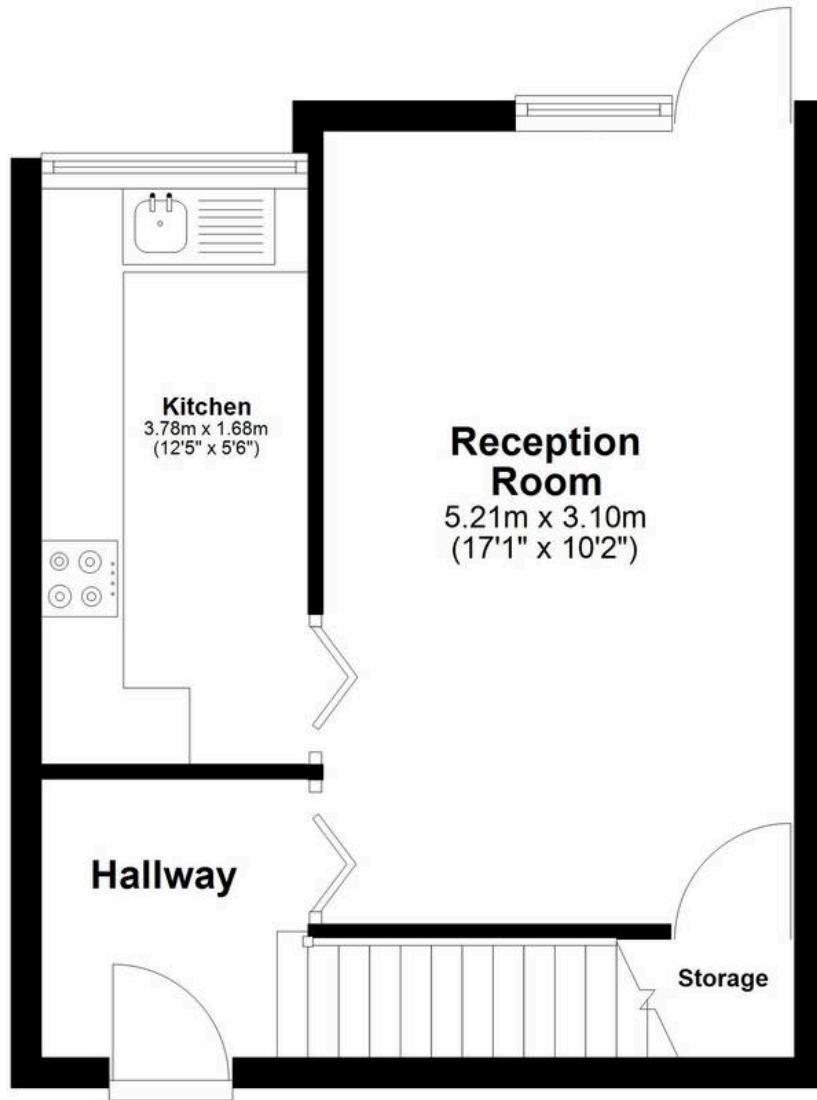
**B**  
VDEN  
DLEY

**B**  
VDEN  
DLEY



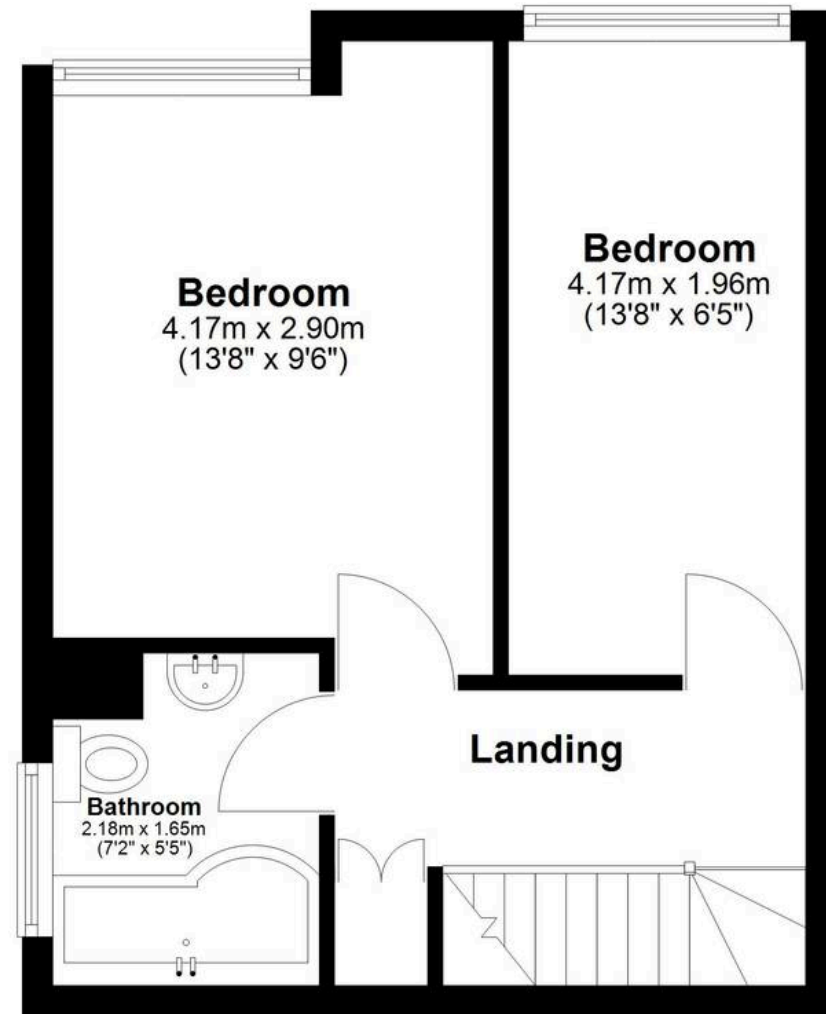
## Ground Floor

Approx. 29.1 sq. metres (313.6 sq. feet)



## First Floor

Approx. 29.9 sq. metres (321.5 sq. feet)



Total area: approx. 59.0 sq. metres (635.2 sq. feet)



## Bowden Bradley

Bansal House, Bracken Industrial Estate, 185 Forest Road - IG6 3HX

02080593593 · [info@bowdenbradley.co.uk](mailto:info@bowdenbradley.co.uk) · [bowdenbradley.co.uk/](http://bowdenbradley.co.uk/)