

WOODMAN PATH

31 Woodman Path, Hainault

Hainault

Guide Price £375,000

31 Woodman Path

Hainault

Chain free three-bedroom mid-terrace near Hainault Station. Spacious living, separate kitchen, family bathroom, close to shops and schools. Ideal for commuters, families, or first-time buyers.

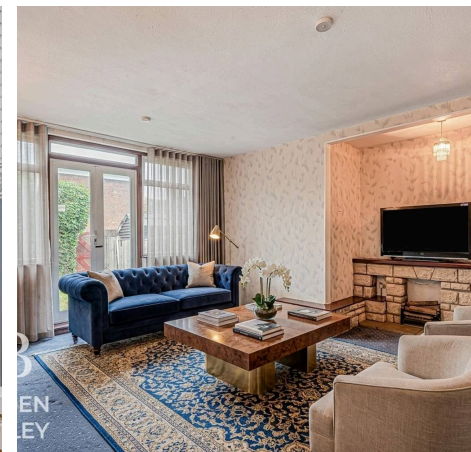
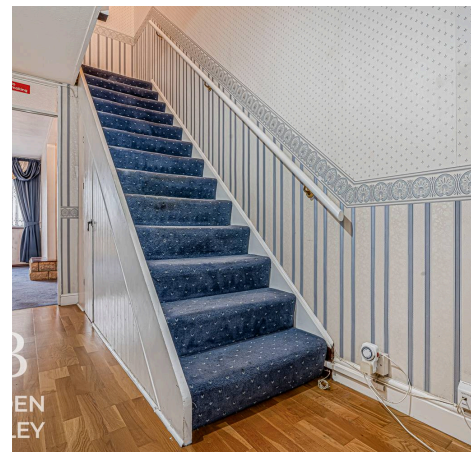
Council Tax band: C

Tenure: Freehold

EPC Energy Efficiency Rating: D

EPC Environmental Impact Rating:

- Guide Price £375,000 - £400,000
- 3 Bedroom House
- Chain Free
- Close to Hainault Station
- Shops Nearby
- Ideal for First Time Buyers
- Spacious Rooms
- Ideal for Leaving your Own Mark
- Hainault Forest Nearby





B
BOWDEN
BRADLEY

Hallway

Kitchen

13' 5" x 8' 6" (4.09m x 2.59m)

Living Room

15' 0" x 11' 8" (4.57m x 3.56m)

Bedroom

14' 11" x 8' 8" (4.55m x 2.64m)

Bedroom

12' 1" x 6' 1" (3.68m x 1.85m)

Bedroom

11' 3" x 6' 9" (3.43m x 2.06m)

Bathroom

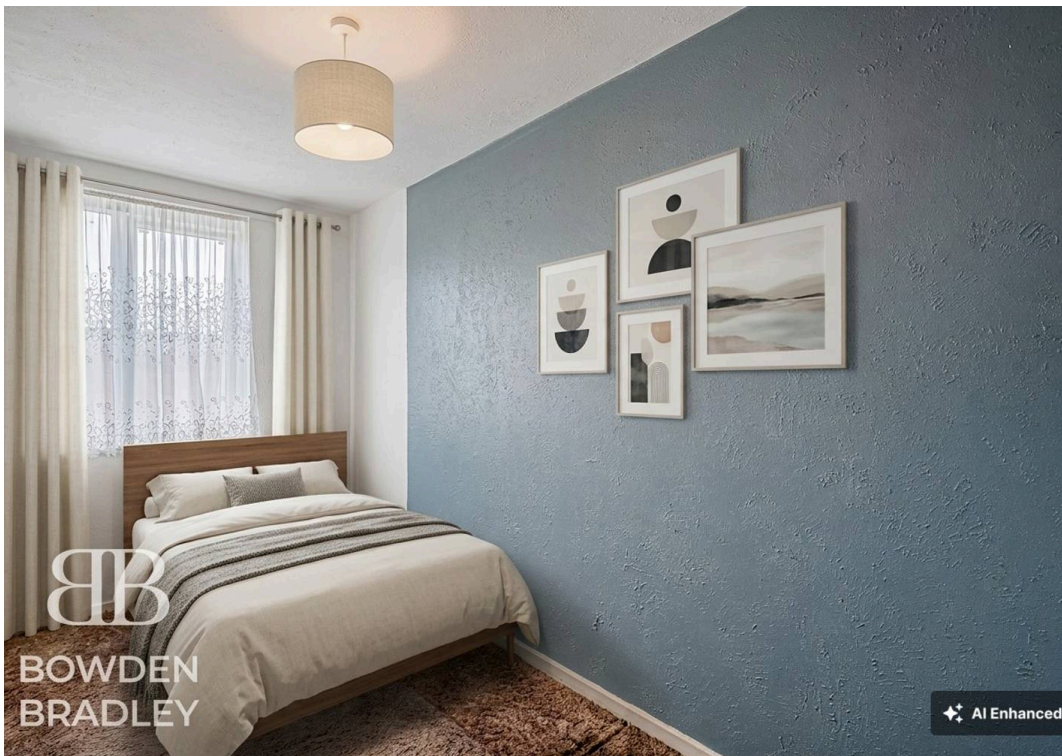
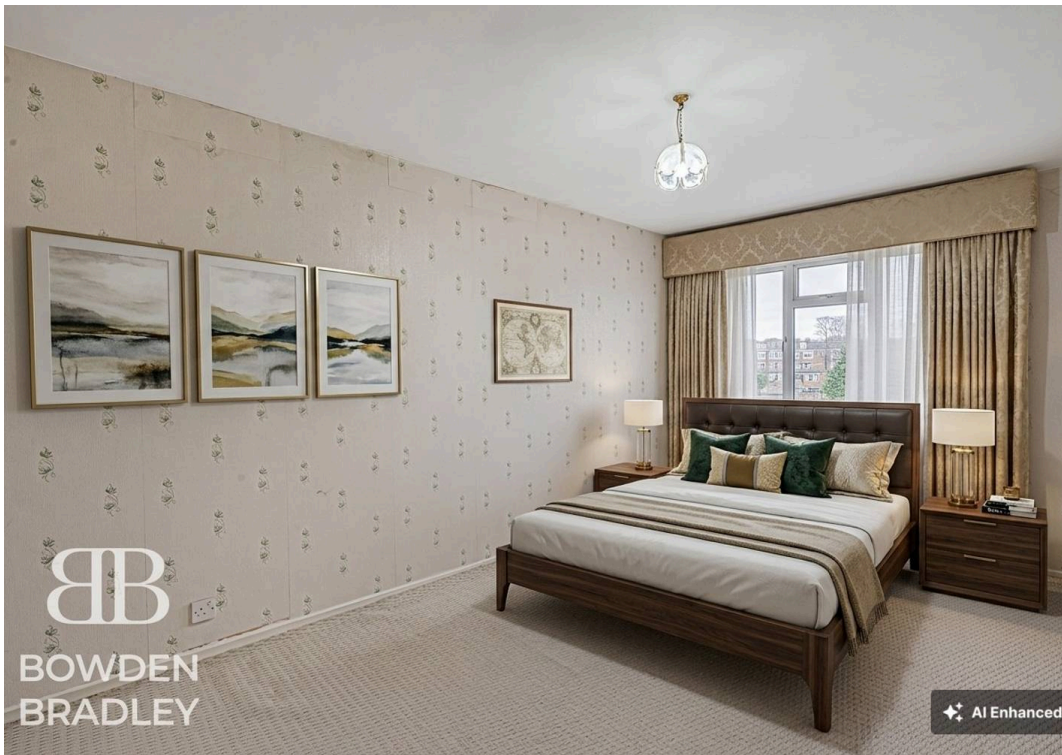
Garden



B
VDEN
ADLEY



B
VDEN
ADLEY



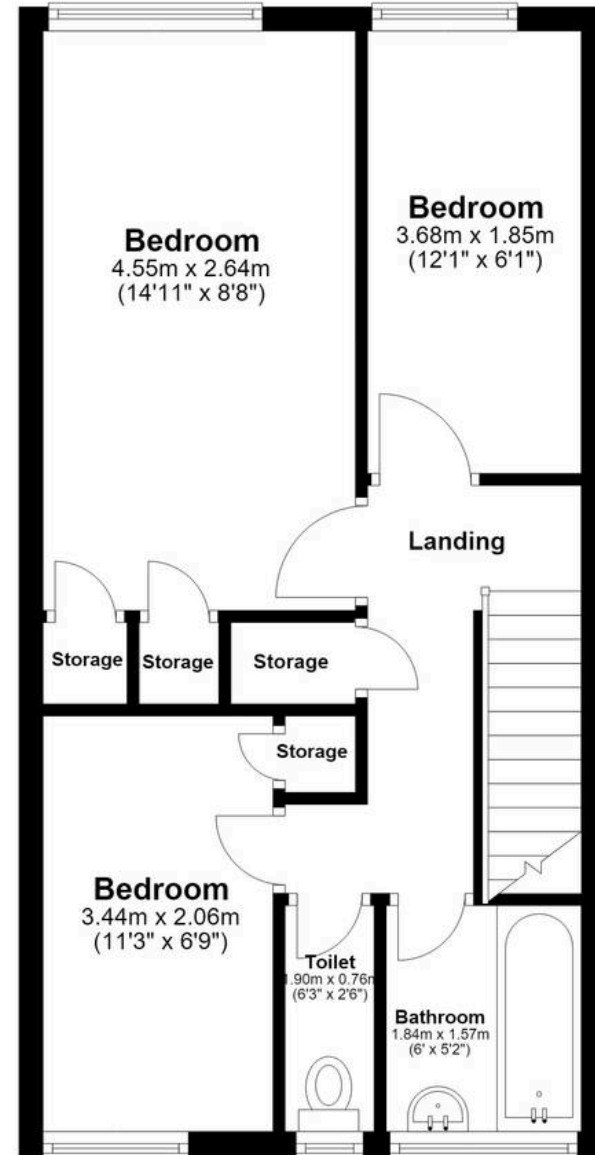
Ground Floor

Approx. 40.0 sq. metres (431.0 sq. feet)



First Floor

Approx. 41.3 sq. metres (445.0 sq. feet)



Total area: approx. 81.4 sq. metres (876.0 sq. feet)



Bowden Bradley

Bansal House, Bracken Industrial Estate, 185 Forest Road - IG6 3HX

02080593593 · info@bowdenbradley.co.uk · bowdenbradley.co.uk/