



Yale

EP

170 Gantshill Crescent, Ilford

Ilford



170 Gantshill Crescent

Ilford

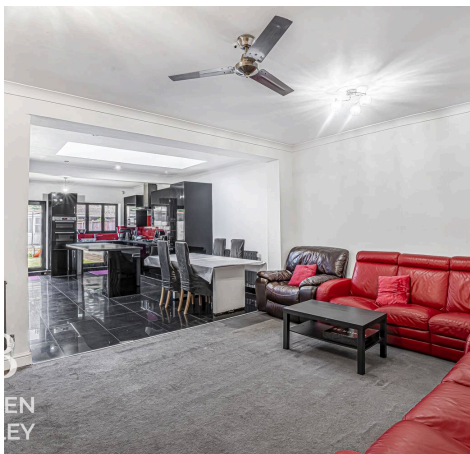
Council Tax band: D

Tenure: Freehold

EPC Energy Efficiency Rating: D

EPC Environmental Impact Rating: D

- Guide Price £650,000 - £700,000
- Large 5 Bedroom House
- Chain Free
- Sought After Location
- Off Street Parking
- 0.4 Miles to Gants Hill Underground Station





Living Room

14' 4" x 12' 1" (4.37m x 3.68m)

Dining Room

12' 9" x 18' 1" (3.89m x 5.51m)

Kitchen

22' 1" x 17' 10" (6.73m x 5.44m)

Utility Room

5' 6" x 5' 6" (1.68m x 1.68m)

WC

4' 10" x 3' 8" (1.48m x 1.12m)

Bedroom

14' 4" x 10' 8" (4.37m x 3.25m)

Bedroom

13' 4" x 11' 6" (4.06m x 3.51m)

Bedroom

8' 8" x 6' 7" (2.64m x 2.01m)

Bathroom

8' 7" x 6' 0" (2.62m x 1.83m)

Bedroom

7' 5" x 17' 11" (2.26m x 5.46m)

Bedroom

11' 1" x 10' 7" (3.38m x 3.23m)

Shower Room

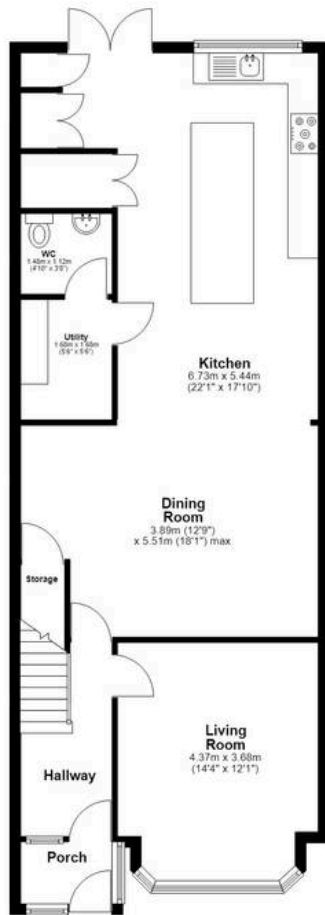
7' 10" x 6' 8" (2.39m x 2.03m)





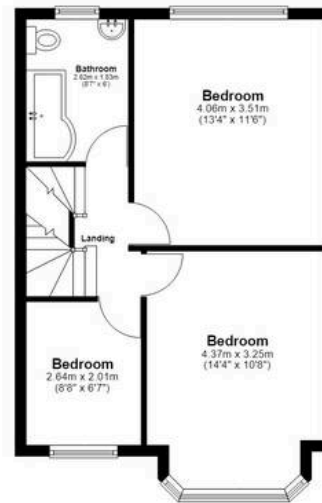
Ground Floor

Approx. 101.2 sq. metres (1089.3 sq. feet)



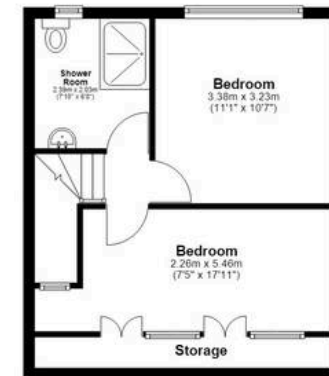
First Floor

Approx. 44.8 sq. metres (482.5 sq. feet)



Second Floor

Approx. 35.2 sq. metres (378.7 sq. feet)



Total area: approx. 181.2 sq. metres (1950.6 sq. feet)



Bowden Bradley

Bansal House, Bracken Industrial Estate, 185 Forest Road - IG6 3HX

02080593593 · info@bowdenbradley.co.uk · bowdenbradley.co.uk/