



5 Fallow Close, Chigwell

Chigwell

Guide Price **£450,000**



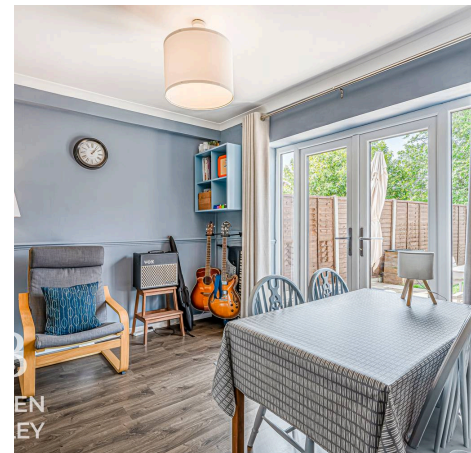
5 Fallow Close

Chigwell, Chigwell

Council Tax band: C

Tenure: Freehold

- Guide Price - £450,000 - £500,000
- 3 Bedroom Mid Terrace Home
- Immaculate Throughout
- Open Plan Kitchen / Diner
- Sought After Pocket Of Area
- Hainault Station In Close Proximity
- Plenty Of Shops & Amenities Nearby
- Fairlop Waters & Hainault Woodlands a Short Stroll Away
- Great For First Time Buyers





Living Room

11' 2" x 14' 5" (3.40m x 4.39m)

Kitchen/Diner

11' 3" x 21' 3" (3.43m x 6.48m)

Bedroom

11' 5" x 11' 6" (3.48m x 3.51m)

Bedroom

9' 2" x 14' 1" (2.79m x 4.29m)

Bedroom

12' 7" x 9' 5" (3.83m x 2.87m)

Bathroom

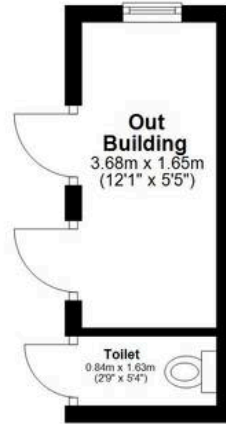
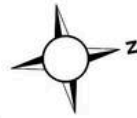
6' 3" x 6' 7" (1.91m x 2.01m)





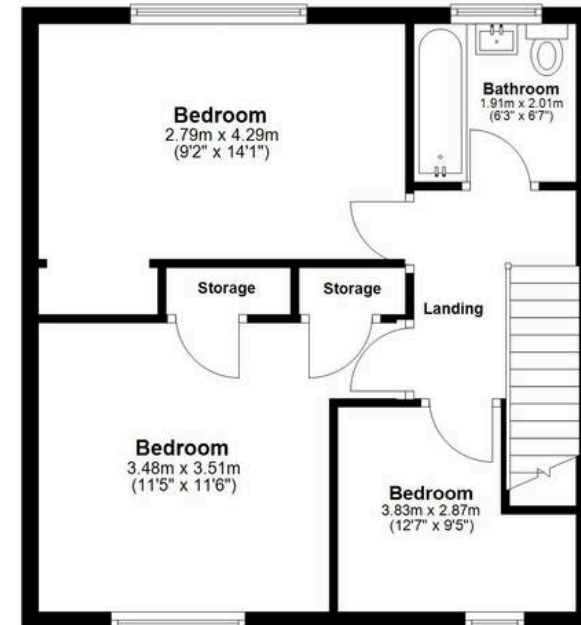
Ground Floor

Approx. 58.2 sq. metres (626.1 sq. feet)
(excluding Toilet)



First Floor

Approx. 47.0 sq. metres (506.0 sq. feet)



Total area: approx. 105.2 sq. metres (1132.1 sq. feet)



Bowden Bradley

Bansal House, Bracken Industrial Estate, 185 Forest Road - IG6 3HX

02080593593 · info@bowdenbradley.co.uk · bowdenbradley.co.uk/