



3
DEN
LEY

Flat 3, Thurlby House, Woodford Green

Woodford Green

Guide Price £250,000



Flat 3

Thurlby House, Woodford Green

Council Tax band: C

Tenure: Share of Freehold

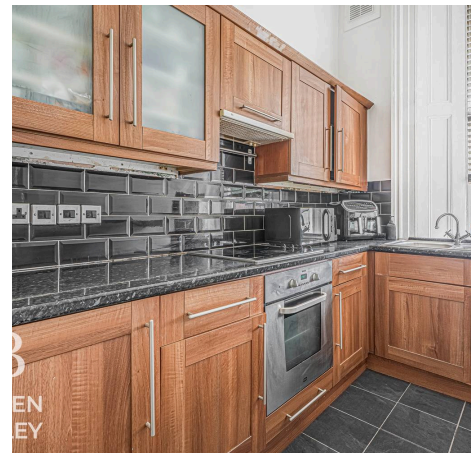
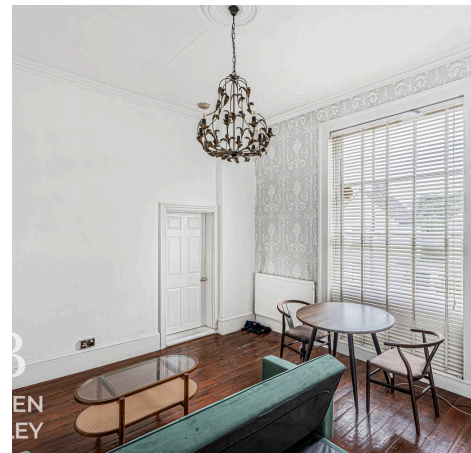
EPC Energy Efficiency Rating: D

EPC Environmental Impact Rating: E

- Guide Price £250,000 - £290,000
- 1 Bedroom Ground Floor Apartment
- No Onwards Chain
- Share of Freehold
- Grade II Listed Building
- Brand New Combi Boiler
- Private Parking
- High Ceilings & Period Features
- Excellent Access to Woodford & Chigwell Stations

B
BOWDEN
BRADLEY

AI Enhance



B
EN
EY

B
EN
EY

B
EN
EY



Living Room

14' 3" x 15' 2" (4.34m x 4.62m)

Kitchen

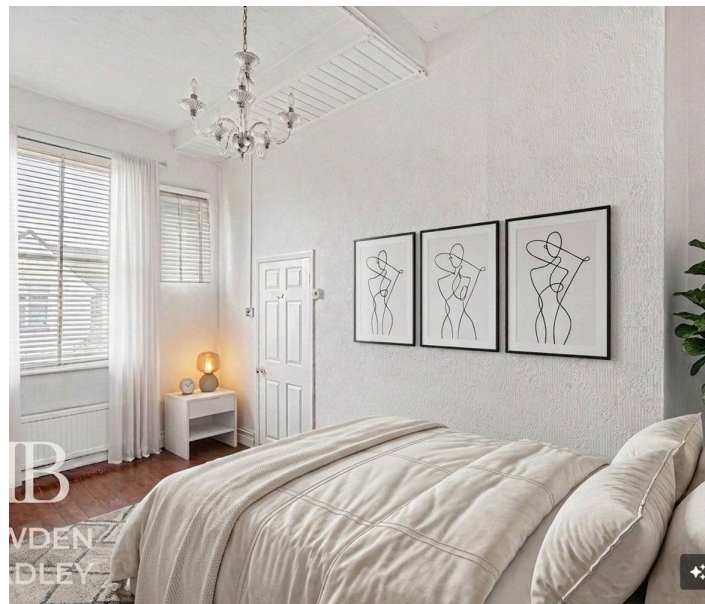
10' 0" x 6' 0" (3.05m x 1.83m)

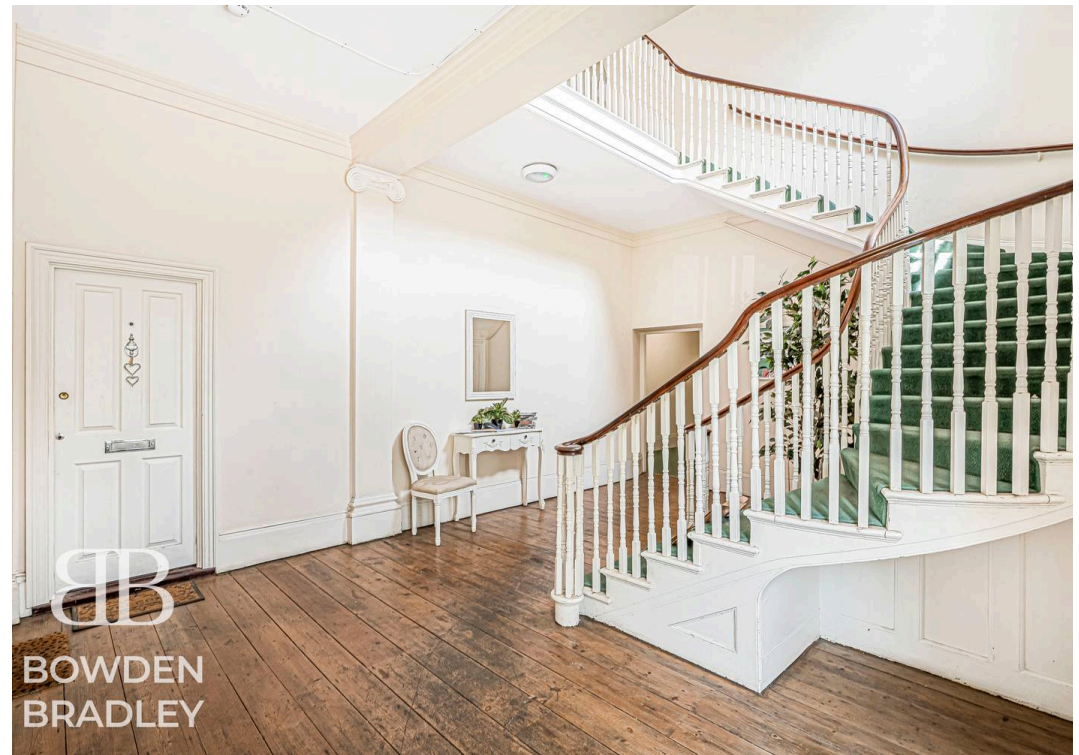
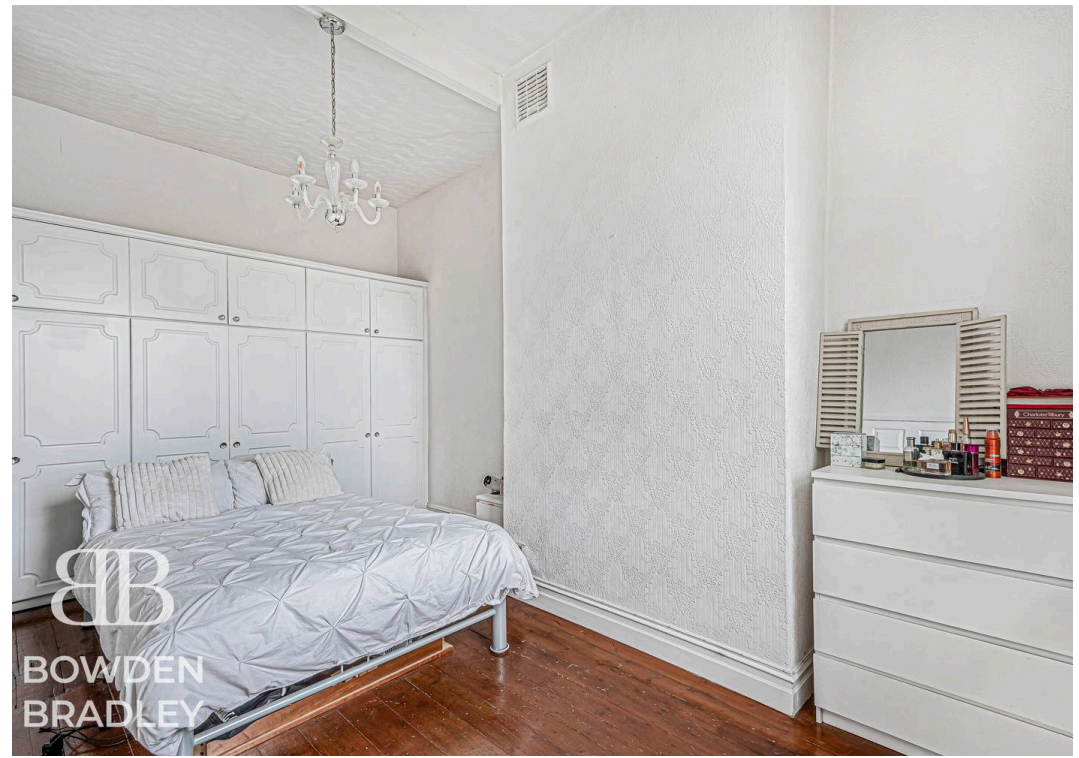
Bathroom

9' 1" x 4' 7" (2.77m x 1.40m)

Bedroom

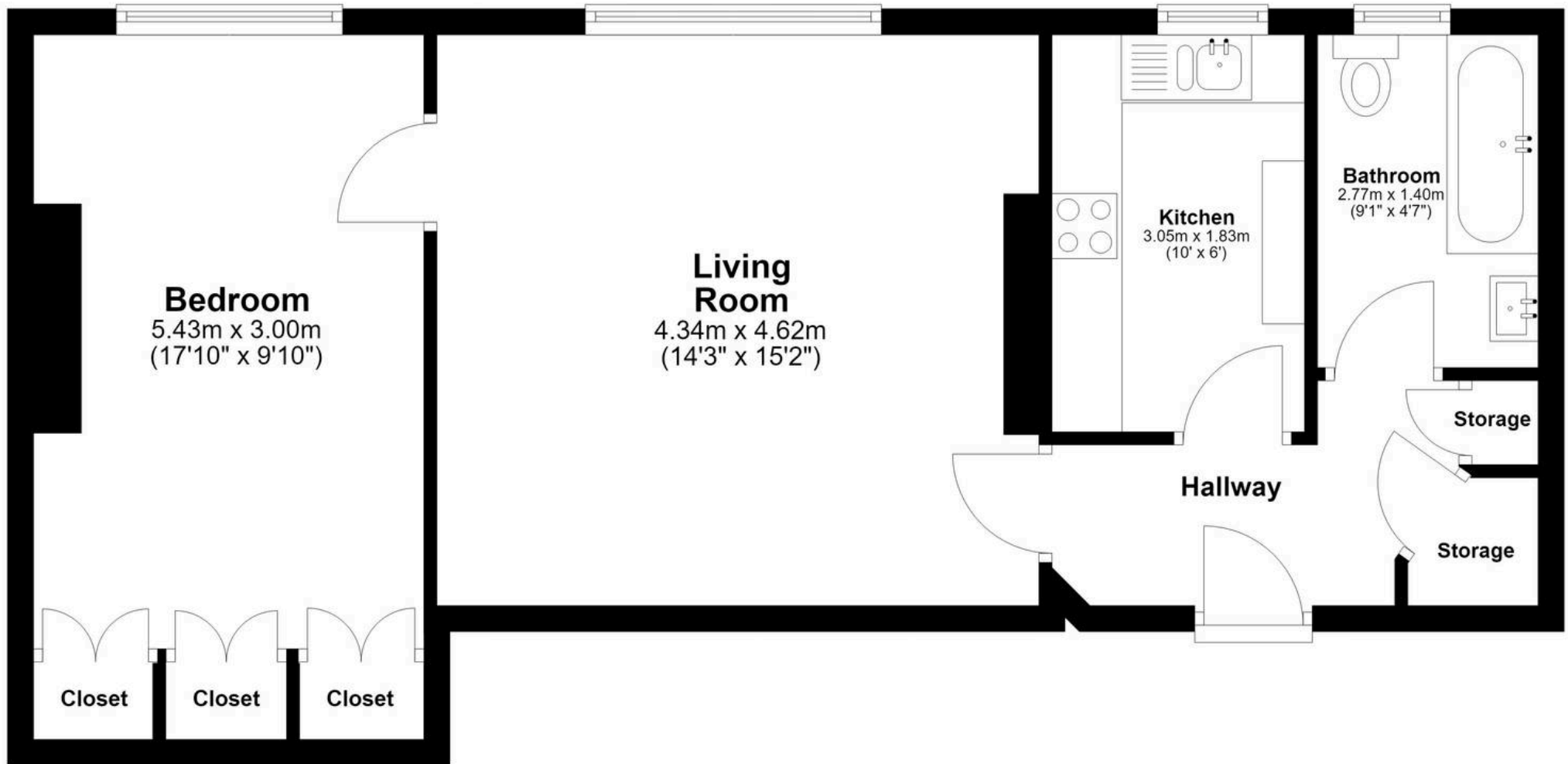
17' 10" x 9' 10" (5.43m x 3.00m)





Ground Floor

Approx. 52.6 sq. metres (566.7 sq. feet)



Total area: approx. 52.6 sq. metres (566.7 sq. feet)



Bowden Bradley

Bansal House, Bracken Industrial Estate, 185 Forest Road - IG6 3HX

02080593593 · info@bowdenbradley.co.uk · bowdenbradley.co.uk/