



SCAN ME

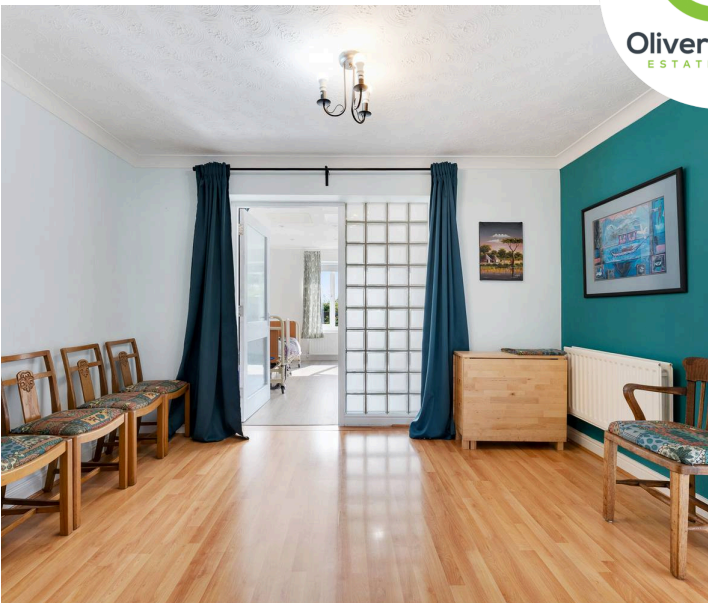
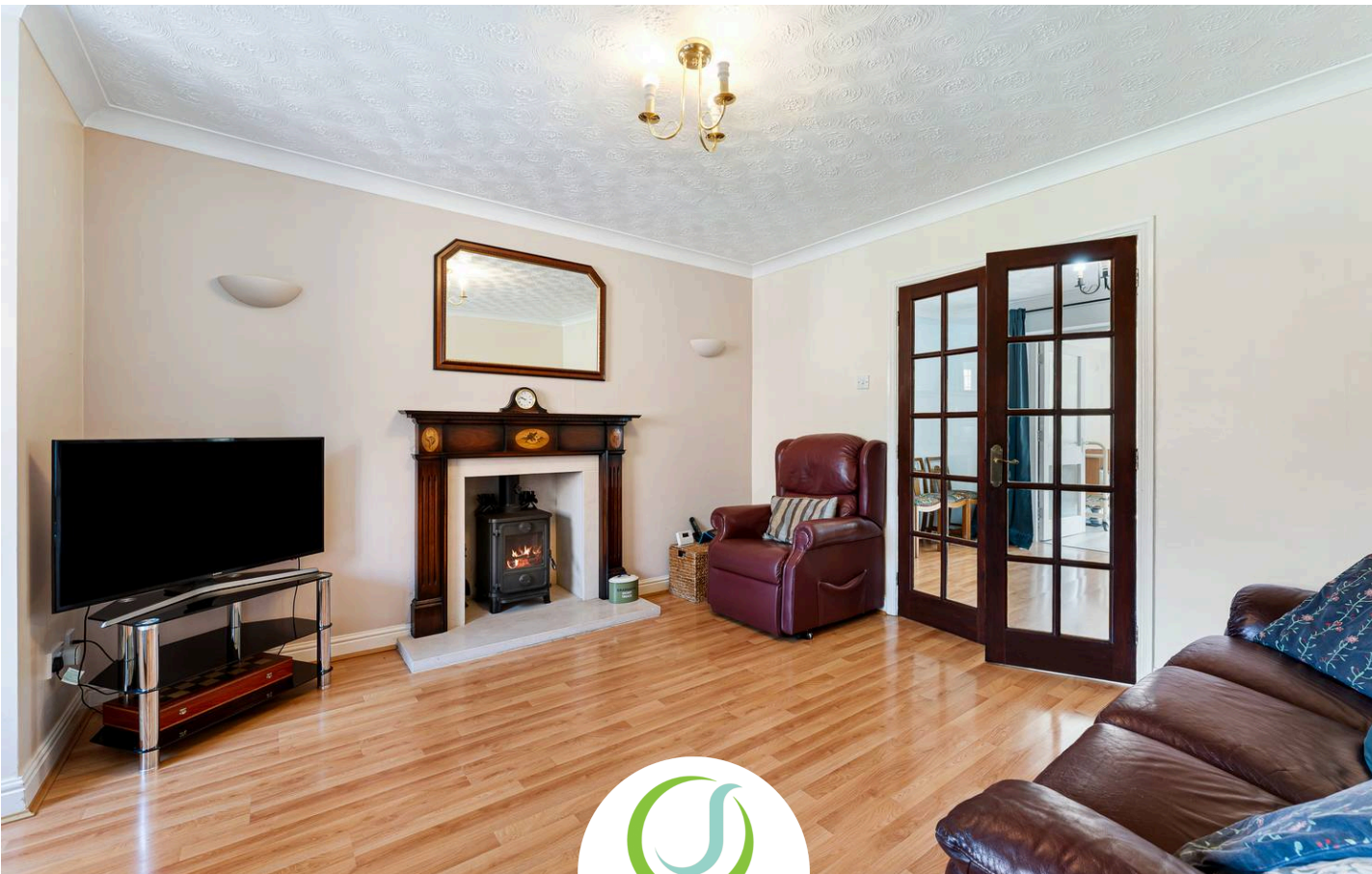


BOOK A VIEWING



Rockingham Close, Gorse Covert

Offers Over £425,000



106 Rockingham Close

Birchwood, Warrington

Spacious 5 bed, 3 bath detached home with modern kitchens, 2 receptions, landscaped gardens, solar panels, garage, EV charging, office space, and countryside views. Ideal for family living.

Council Tax band: E

Tenure: Freehold

- Extended Spacious detached house
- Five bedroom Home
- Spacious downstairs with three reception rooms
- Three modern bathrooms, including downstairs wetroom, En Suite Wetroom and family bathroom
- Guest WC
- Open Aspect Views as far as the eyes can see over Moss and farmland
- Driveway for several cars
- Single garage
- Solar panels (energy efficient), 11 in total reducing your energy bills
- Cul-De-Sac Location





Hallway

Front facing upvc door, laminate flooring and radiator.

Lounge

16' 2" x 12' 2" (4.92m x 3.70m)

Front facing upvc leaded window, laminate flooring, Log burner, coving and radiator.

Dining Room

12' 2" x 9' 0" (3.70m x 2.74m)

Glass Brick partition, laminate flooring, coving and radiator.

Kitchen / diner

15' 11" x 12' 2" (4.86m x 3.72m)

Rear facing upvc window, side facing upvc door, fitted range of base and wall units, oven, hob, plumbed for washer, understairs cupboard, tiled flooring and radiator.

Bedroom Five

14' 4" x 10' 5" (4.36m x 3.18m)

Rear facing upvc window, laminate flooring, two velux windows and radiator.

Wetroom

7' 9" x 7' 5" (2.36m x 2.26m)

Rear facing upvc window, tiled walls, WC, wash basin, walk in shower and heated towel radiator.

Study

9' 2" x 5' 8" (2.80m x 1.72m)

Side facing upvc window, front facing arched window, laminate flooring and radiator.

Guest WC

3' 3" x 4' 11" (1.00m x 1.50m)

Arched upvc window, tiled flooring, WC, wash basin and radiator.

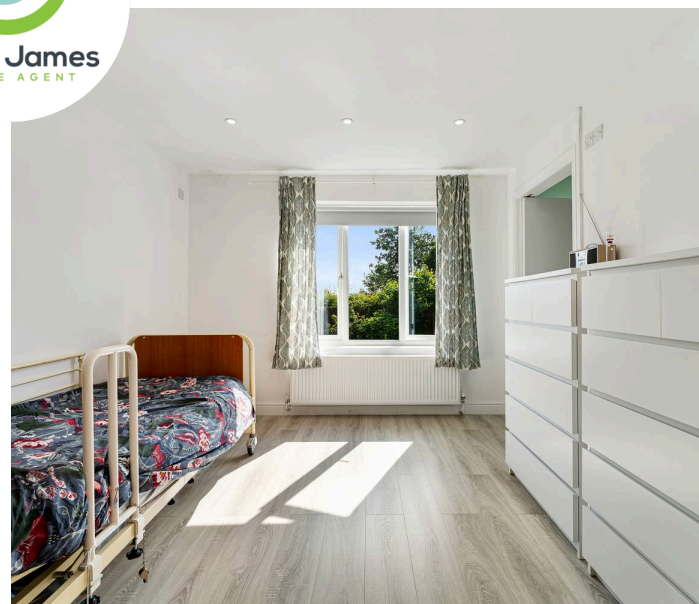
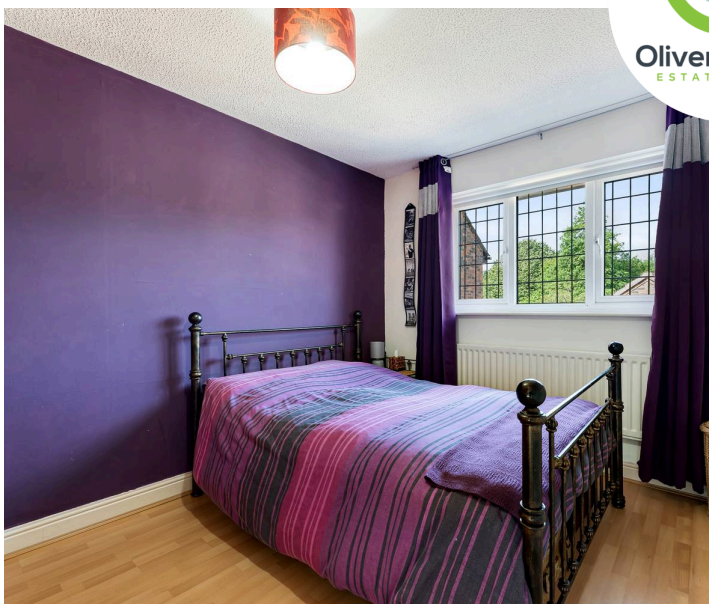
Landing

Airing cupboard, loft access with ladder, light, mostly boarded with insulation.

Bedroom One



Oliver James
ESTATE AGENT



GARDEN

Patio, flower borders, lawn and open aspect views.

DRIVEWAY

3 Parking Spaces

GARAGE

Single Garage

2.5m x 5.1m





Total Area: 129.1 m² ... 1389 ft²

All measurements are approximate and for display purposes only



Total Area: 129.1 m² ... 1389 ft²

All measurements are approximate and for display purposes only





Oliver James

Oliver James, 4 Liverpool Road - M44 5AF

0161 696 5050 • hello@oliverjames.co.uk • oliverjames.co.uk

