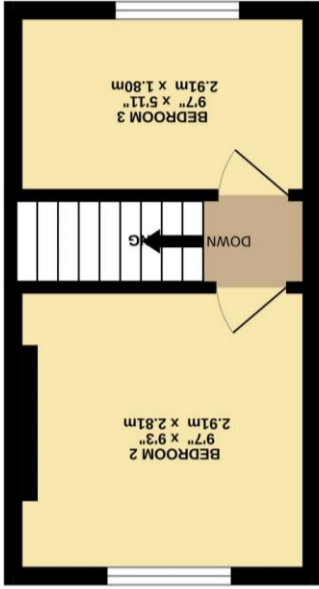
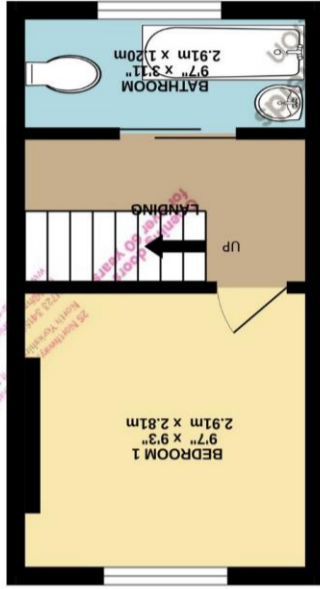


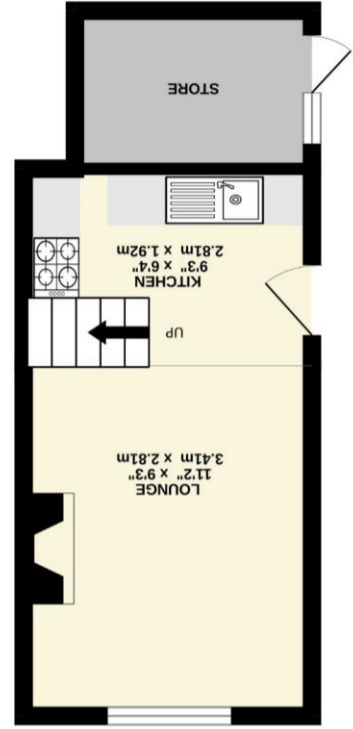
Whilst every attempt has been made to ensure the accuracy of the floorplan contained here, measurements of doors, windows, rooms and any other items are approximate and no responsibility is taken for any error, omission or mis-statement. This plan is for illustrative purposes only and should be used as such by any prospective purchaser. The services, systems and appliances shown have not been tested and no guarantee as to their operability or efficiency can be given.
 Made with Metropix ©2026



2ND FLOOR
 170 sq.ft. (15.8 sq.m.) approx.



1ST FLOOR
 170 sq.ft. (15.8 sq.m.) approx.



GROUND FLOOR
 195 sq.ft. (18.1 sq.m.) approx.



35 Sussex Street, Scarborough, North Yorkshire,
 YO11 1BJ

Harris Shields
 Collection

A three bedroom end terraced house.

- ✓ End Terraced House
- ✓ Three Bedrooms
- ✓ Well Presented & Maintained
- ✓ No Onward Chain
- ✓ Newly Decorated & Flooring
- ✓ Selective License Compliant
- ✓ Ideal First Time Buyer Home
- ✓ Or Buy To Let Investment

Asking Price £90,000

Harris Shields Collection

Harris Shields Collection, 25 Northway, Scarborough
North Yorkshire, YO11 1JH

01723 341557

mail@harris-shieldscollection.uk

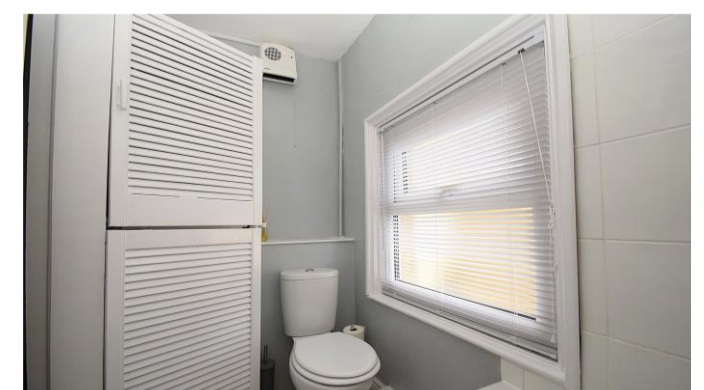
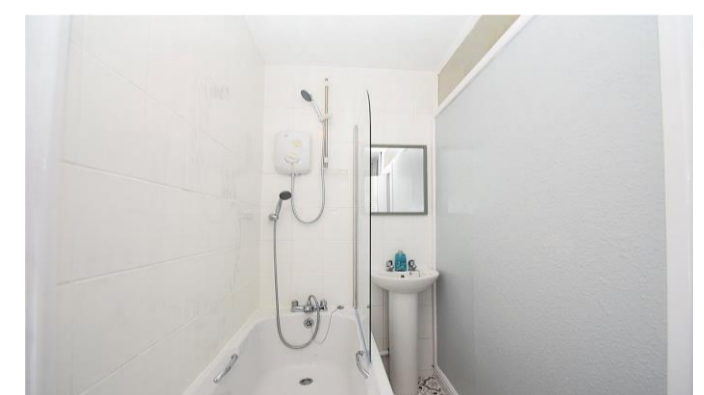
<https://harris-shieldscollection.uk/>

Description

Offered to the market with no onward chain, this superb three bedroom end-terraced home presents an excellent opportunity for first-time buyers, investors, or those seeking a well-priced home close to local amenities. Recently redecorated throughout and benefitting from newly fitted carpets, the property is ready for immediate occupation and represents exceptional value for money. Of particular interest to investors, the property offers an estimated gross annual rental income of approximately £8,340, equating to a potential gross yield in excess of 9%, making this a highly attractive buy-to-let opportunity. The accommodation briefly comprises a side entrance door leading into a kitchen which opens through to the living area, creating a practical and sociable layout. Stairs rise from the living space to the first floor where there is a bedroom and a bathroom fitted with a white suite and electric shower over the bath. To the second floor are two further bedrooms, providing versatile accommodation suitable for families, guests, or home working. The property also benefits from uPVC double glazing and electric heating. Externally, there is side access together with a useful brick-built store providing additional storage space. This is a rare

Additional Information

Council tax band



Opening doors
for over 60 years

Harris Shields
Collection