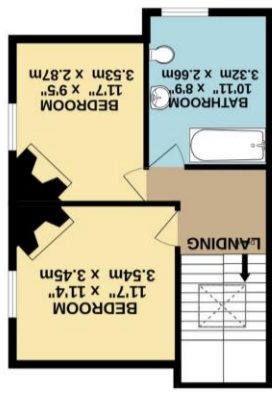


What every attempt has been made to ensure the accuracy of the floorplan contained here, measurements of doors, windows, rooms and other areas are approximate and no responsibility is taken for any error, omission or mis-statement. This plan is for guidance purposes only and should be used as such by any prospective purchaser. The services, systems and appliances shown have not been tested and no guarantee as to their operability or efficiency can be given.



156 North Marine Road, Scarborough, North  
 Yorkshire, YO12 7HZ

Harris Shields  
 Collection



## A Gorgeous Period Five Bedroom Townhouse

- ✓ Stunning End Terraced Period Home
- ✓ Five Double bedrooms
- ✓ Three Bathrooms
- ✓ Three Reception Rooms
- ✓ No Onward Chain
- ✓ Just 500 Yards From The Beach
- ✓ Enclosed Rear Courtyard

Offers in excess of £250,000

# Harris Shields Collection

Harris Shields Collection, 25 Northway, Scarborough  
North Yorkshire, YO11 1JH

01723 341557

[mail@harris-shieldscollection.uk](mailto:mail@harris-shieldscollection.uk)

<https://harris-shieldscollection.uk/>

### Description

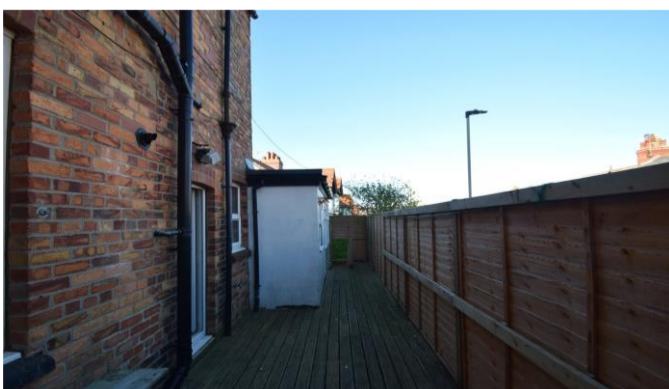
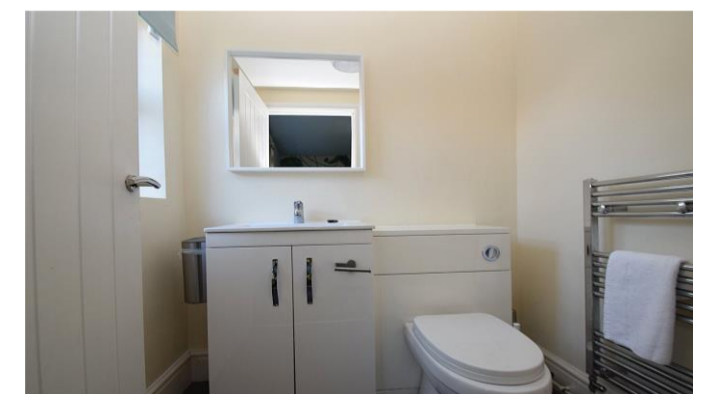
Harris Shields Collection are delighted to introduce 'The Townhouse', a substantial and beautifully proportioned end-terrace home set across three impressive floors, offering exceptional space and versatility in a highly sought-after coastal location. This impressive property presents a rare opportunity for large or growing families, those seeking a seaside retreat, or investors looking to secure a prime property close to Scarborough's most popular attractions.

Upon entering, the sense of space is immediately apparent. The ground floor offers a welcoming front-facing living room, complemented by an elegant dining room, ideal for both everyday living and entertaining. To the rear, a modern fitted kitchen features stylish grey wall and base units paired with light wooden work surfaces, creating a contemporary yet inviting space. Beyond the kitchen lies a cosy additional reception room or snug, complete with a convenient WC and access to the rear courtyard, enhancing the practicality of the layout.

The first floor comprises three generously sized double bedrooms, including one benefiting from its own en-suite shower room, alongside a well-appointed family bathroom. The

### Additional Information

Council tax band



Opening doors  
for over 60 years

Harris Shields  
Collection