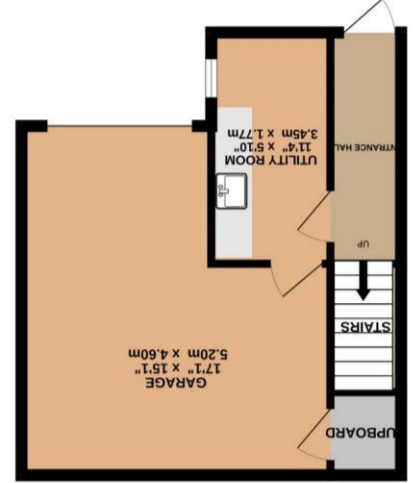
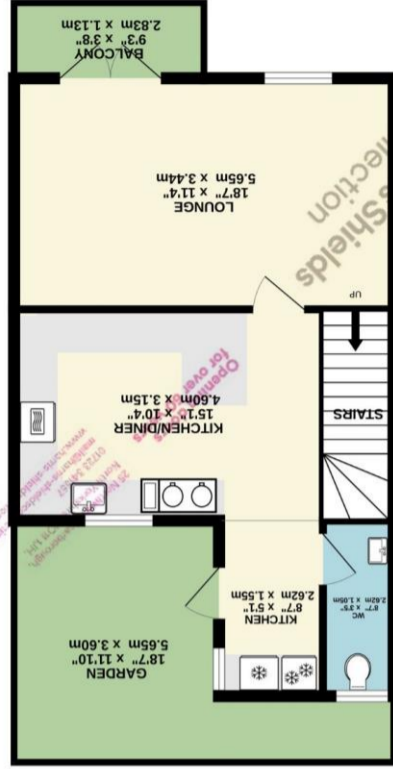
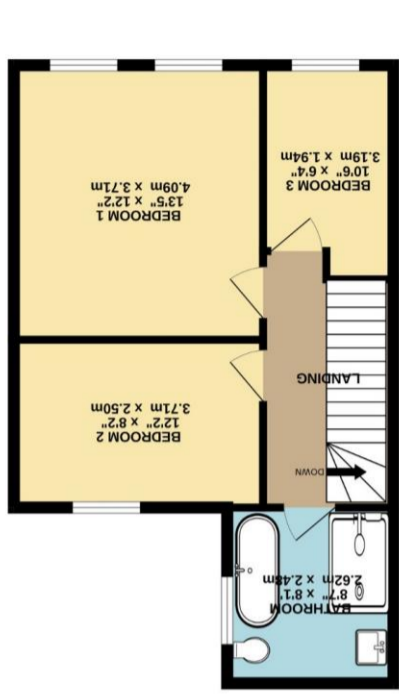


Whilst every attempt has been made to ensure the accuracy of the floorplan contained here, measurements of doors, windows, rooms and other items are approximate and no responsibility is taken for any omission or mis-statement. This plan is for illustrative purposes only and should be used as such by any prospective purchaser. The services, systems and appliances shown have not been tested and no guarantee as to their operability or efficiency can be given.  
 Made with Metropix ©2025  
**TOTAL FLOOR AREA: 1304 sq.ft. (121.1 sq.m.) approx.**



6 Graham Close, Paradise, Scarborough, North  
 Yorkshire, YO11 1RU

**Harris Shields**  
 Collection

## A Stunning Old Town Coastal Home With Sea Views.

- ✓ Modern Town House in Historic Old Town.
- ✓ Amazing Sea & Coastal Views
- ✓ Garage & Driveway
- ✓ Balcony And Courtyard Patio Garden Also
- ✓ Stunning High Specification Home
- ✓ Rare Opportunity Of A Modern Home In Historic Old Town
- ✓ Three Bedrooms Plus Gorgeous Bathroom Plus    Asking Price £365,000

# Harris Shields Collection

Harris Shields Collection, 25 Northway, Scarborough North Yorkshire, YO11 1JH

01723 341557

[mail@harris-shieldscollection.uk](mailto:mail@harris-shieldscollection.uk)

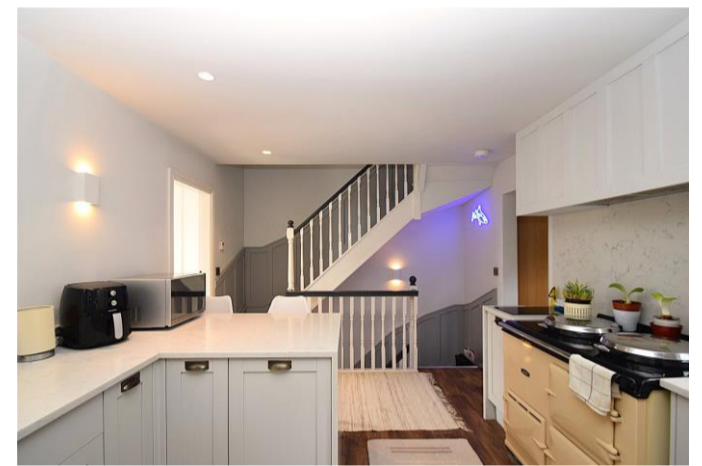
<https://harris-shieldscollection.uk/>

### Description

A rare and exciting opportunity to acquire this truly outstanding coastal home occupying an enviable position within Scarborough's historic Old Town, at the foot of the iconic castle. Having undergone a comprehensive and meticulous programme of refurbishment, this remarkable property has been finished to an exceptional standard throughout, with no expense spared. The result is a striking home that perfectly blends contemporary luxury with character and an unrivalled coastal setting. Enjoying beautiful sea views, the property further benefits from a private balcony, driveway, integral garage, and an enclosed courtyard garden—features seldom found together in such a central and historic location. The installation of solar panels enhances the home's efficiency, offering a more economical and environmentally conscious way of living. The accommodation is both versatile and generously proportioned, arranged over three floors. Properties of this calibre and location are seldom available, and early viewing is highly recommended to fully appreciate the quality, setting, and lifestyle on offer.

### Additional Information

Council tax band C



Opening doors  
for over 60 years

Harris Shields  
Collection