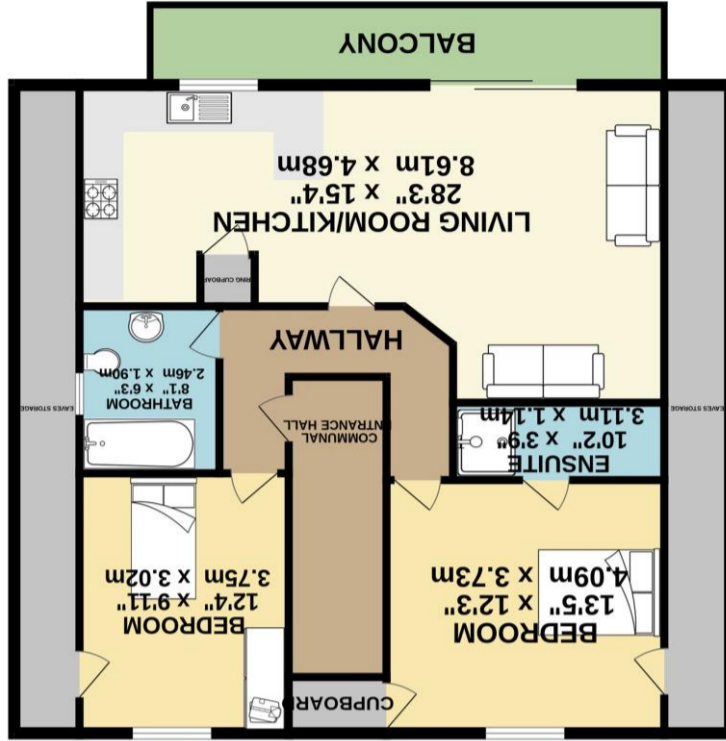




TOTAL FLOOR AREA: 1083 sq.ft. (100.7 sq.m.) approx.
 Whilst every attempt has been made to ensure the accuracy of the floorplan contained here, measurements of actual rooms, rooms and areas are given and are intended to be used as such. Any prospective purchaser, tenant or licensee should be given.
 Made with Metropix (2022)



APARTMENT LAYOUT
1083 sq.ft. (100.7 sq.m.) approx.



3 Carnaby Villas, Carnaby Covert Lane, Carnaby, Bridlington, East Yorkshire, YO15 3QB

Harris Shields Collection

Beautifully presented apartment with balcony, garden and parking.

- ✓ Two bedroom apartment
- ✓ First floor living
- ✓ Private balcony
- ✓ Open plan living
- ✓ Garden and parking
- ✓ Beautifully presented throughout
- ✓ Minutes from seafront

Asking Price £139,995

Harris Shields Collection

Harris Shields Collection, 14 Promenade, Bridlington East Yorkshire, YO15 2PX

01262 601704

estateagents@harris-shieldscollection.uk

<https://harris-shieldscollection.uk/>

Beautifully presented throughout, this well-maintained two-bedroom first-floor apartment offers comfortable and stylish living in the popular village of Carnaby, just a two-minute drive from Bridlington's award-winning seafront and its wide range of amenities.

The accommodation includes a bright and welcoming open-plan lounge, dining and kitchen area, creating an ideal space for everyday living and entertaining. Patio doors from the living area open onto a private balcony, providing the perfect spot to enjoy a morning coffee or relax outdoors. There are two well-proportioned bedrooms and a modern bathroom, all presented to a high standard.

Externally, the property benefits from a garden area and off-street parking, adding to its practicality and appeal.

Ideally situated for those seeking coastal living with convenient access to local shops, transport links and nearby beaches, this attractive apartment would make an excellent permanent residence, holiday home or investment opportunity.

The property is held on a 999-year lease commencing in 2006.

We are informed by the vendor that the current maintenance charge is approximately £60.00 per month.

Early viewing is highly recommended to fully appreciate all that this delightful apartment has to offer.

Council tax band A



**Opening doors
for over 60 years**

**Harris Shields
Collection**