



GROUND FLOOR (435.6 sq.m.) approx.



13 Prince Street, Bridlington, East Riding of Yorkshire, YO15 2NW

Harris Shields Collection

Prime Coastal Commercial Opportunity – 6,765 Sq Ft of Flexible Space in a

- ✓ Prime Coastal Location
- ✓ Extensive Trading Space
- ✓ Strong Footfall Levels
- ✓ Beachside Town Position
- ✓ Flexible Commercial Opportunity
- ✓ Prominent Corner Premises
- ✓ Excellent Business Potential
- ✓ Generous Floor Area

Asking Price £15,000 per annum

Harris Shields Collection

Harris Shields Collection, 14 Promenade, Bridlington
East Yorkshire, YO15 2PX

01262 601704

estateagents@harris-shieldscollection.uk

<https://harris-shieldscollection.uk/>

Description

A rare opportunity to secure a substantial and highly versatile commercial premises in one of Bridlington's most sought-after locations, ideally situated within easy reach of the beach, harbour, and town centre.

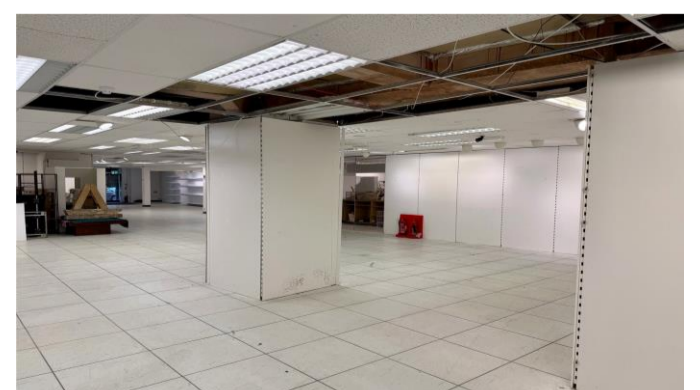
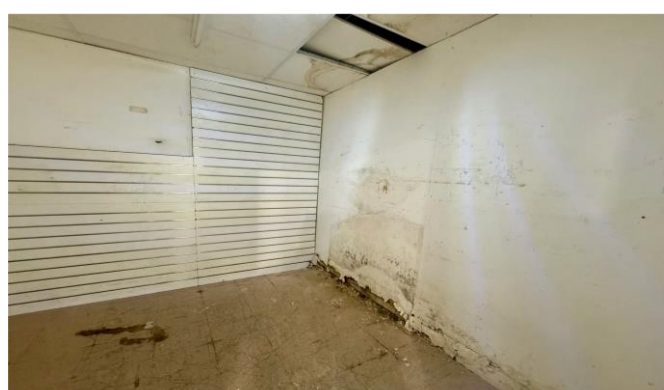
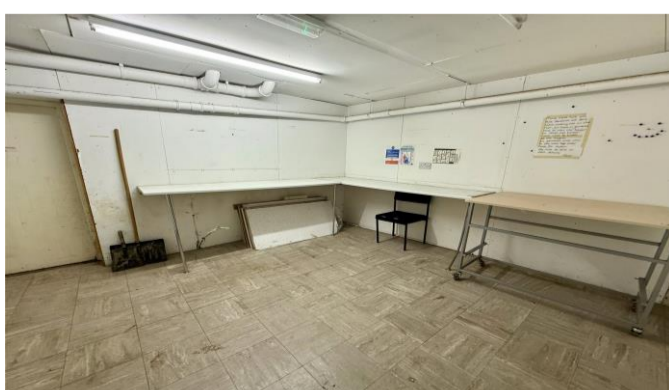
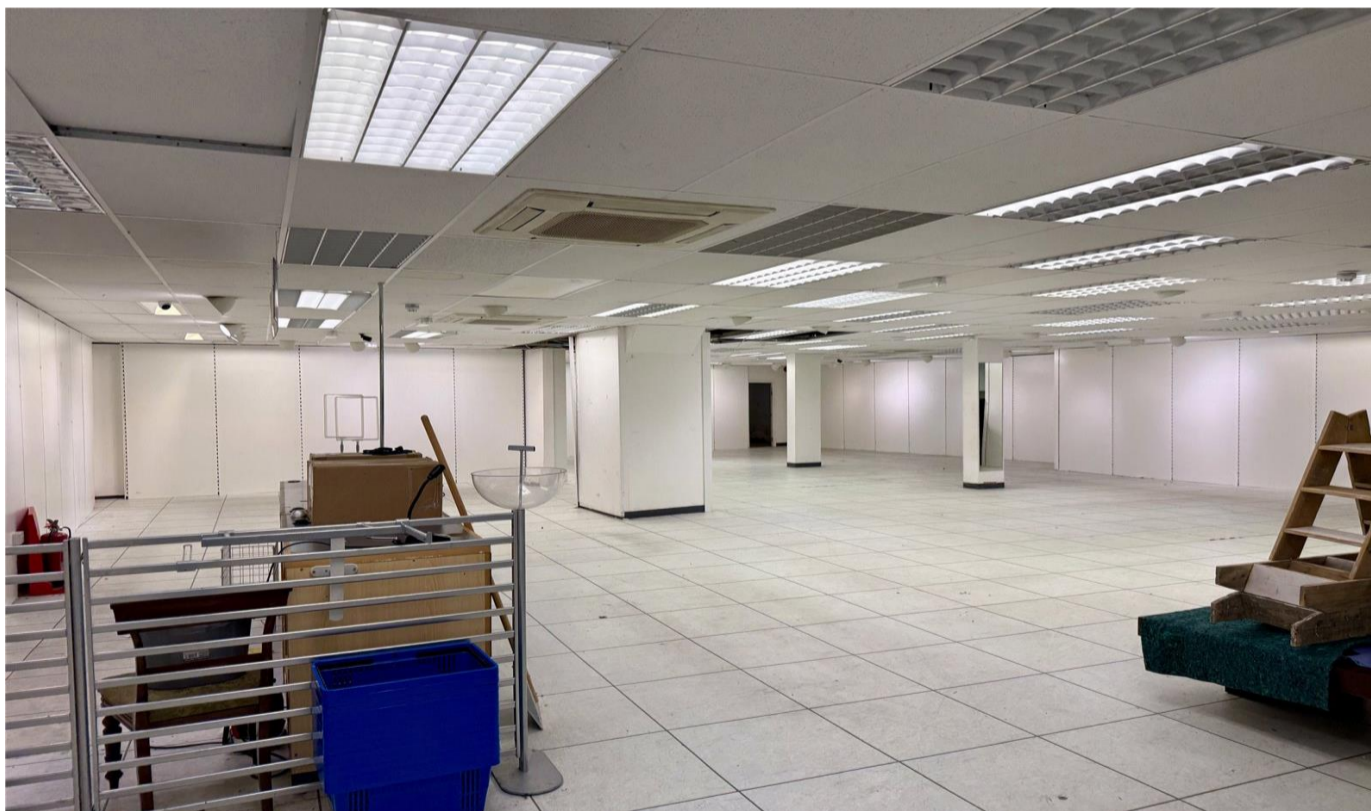
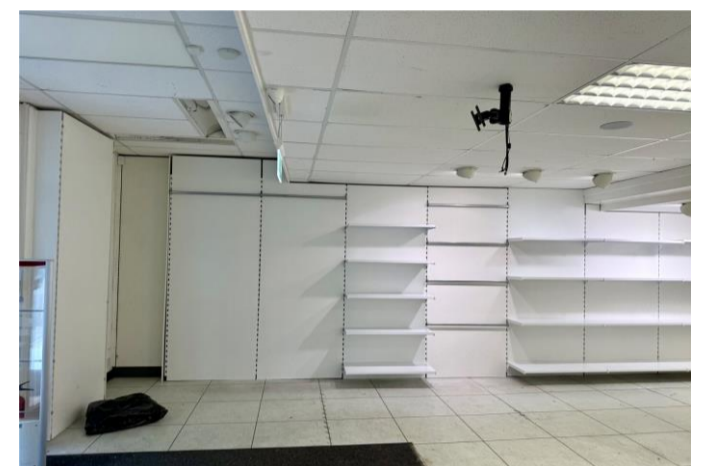
Occupying a prominent position in an area that benefits from strong levels of both local and visitor footfall, the property extends to approximately 6,765 sq ft in total, including around 4,686 sq ft of ground floor trading space, providing an exceptional footprint for a wide range of commercial operations.

The flexible accommodation could suit a variety of uses, subject to any necessary permissions and consents. Whether for retail, leisure, hospitality, office use, or another business venture, the premises offer an outstanding platform from which to establish, expand, or relocate a successful business.

Bridlington remains one of the East Coast's most popular seaside destinations, attracting visitors throughout the year whilst benefiting from a thriving local population. The property's enviable location places it at the heart of this activity, offering excellent visibility, accessibility, and significant commercial potential.

Additional Information

Council tax band NA



Opening doors
for over 60 years

Harris Shields
Collection