

GROUND FLOOR (65.5 sq.m.) approx.



27 St Johns Avenue West, Bridlington, East
Yorkshire, YO16 4NN

Harris Shields
Collection

Charming 2 Bed Bungalow with Spacious 20' Kitchen Diner

- ✓ Requires modernisation
- ✓ Two bedrooms
- ✓ Semi-detached bungalow
- ✓ 20ft kitchen diner
- ✓ Low maintenance garden
- ✓ Sought-after location
- ✓ Close to amenities

Asking Price £150,000

Harris Shields Collection

Harris Shields Collection, 14 Promenade, Bridlington East Yorkshire, YO15 2PX

01262 601704

estateagents@harris-shieldscollection.uk

<https://harris-shieldscollection.uk/>

Situated in a highly desirable cul-de-sac within the popular seaside town of Bridlington, this two-bedroom semi-detached bungalow offers excellent potential for buyers seeking a property to modernise and make their own.

The accommodation includes a spacious 20ft kitchen diner, providing a fantastic footprint and the opportunity to create a superb heart of the home, ideal for both everyday living and entertaining. There are two well-proportioned bedrooms and a shower room, all arranged on one level for ease and convenience.

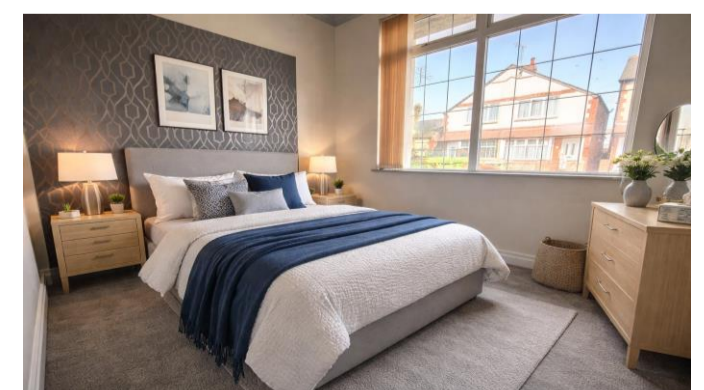
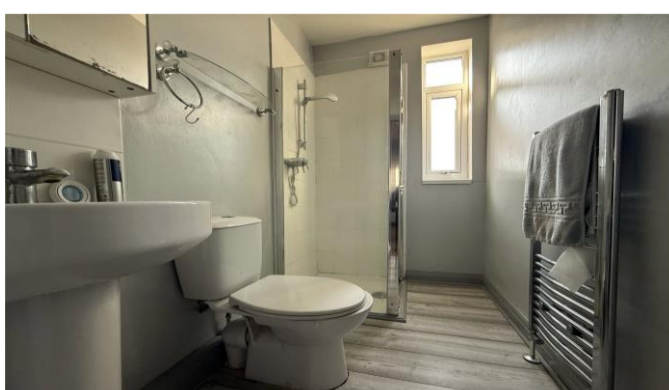
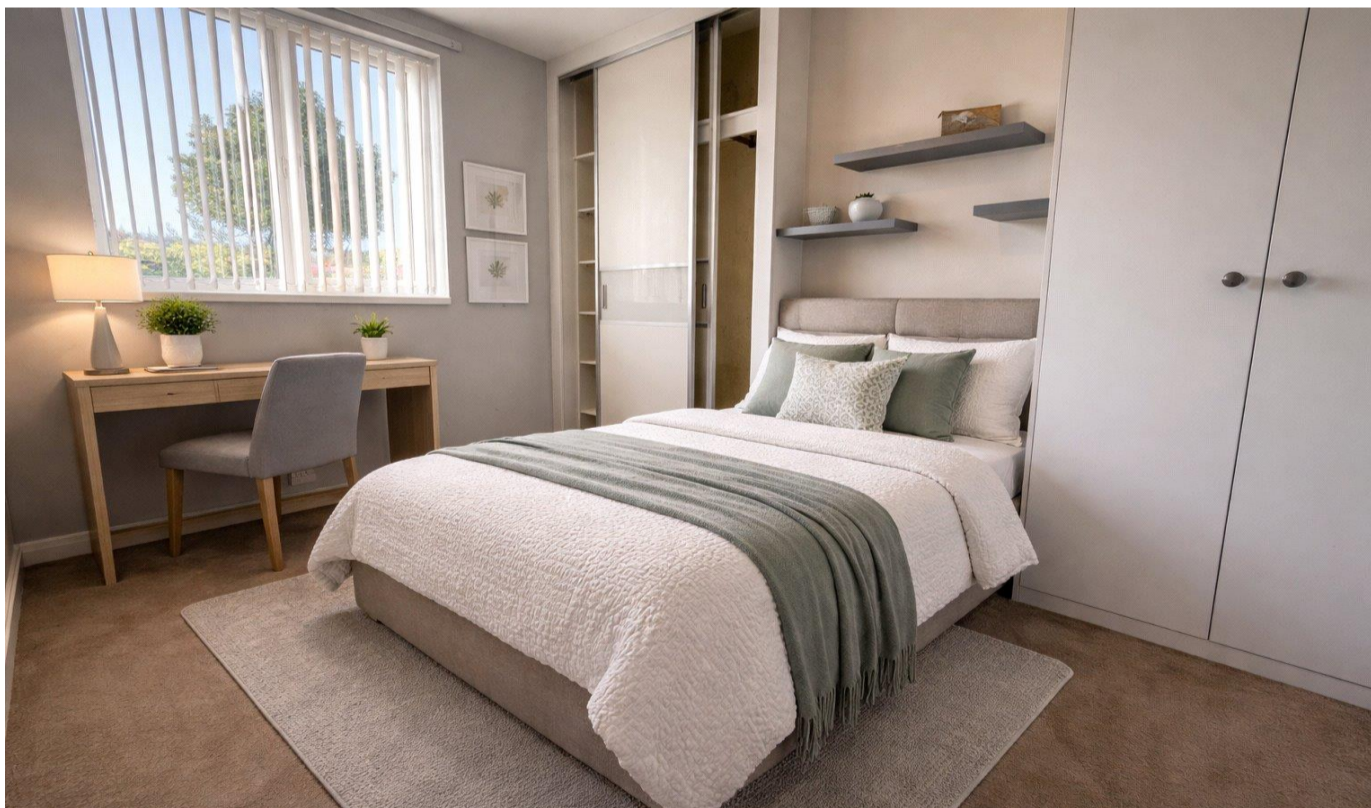
Externally, the bungalow benefits from a low-maintenance garden, offering a practical outdoor space with scope for further improvement.

Well positioned for day-to-day living, the property is within easy reach of a range of local amenities including Morrisons, a nearby doctors' surgery, and local schools, while the seafront and town centre are just a short distance away.

This is an ideal opportunity for those looking to downsize, invest, or create a home tailored to their own tastes in a sought-after coastal location. Early viewing is recommended to appreciate the potential on offer.

Please note: some images have been digitally enhanced for illustrative purposes to show how the property could look once furnished and improved.

Council tax band A



Opening doors
for over 60 years

Harris Shields
Collection