

GROUND FLOOR (95.0 sq.m.) approx.



23 Freshfields, Carnaby Covert Lane, Carnaby,
 Bridlington, East Yorkshire, YO15 3QQ

Harris Shields
 Collection

3-Bed Ground Floor Deceptively Spacious Flat with Great Potential

- ✓ Three bedrooms
- ✓ Ground floor flat
- ✓ Deceptively spacious
- ✓ Requires modernisation
- ✓ Communal gardens
- ✓ Resident parking
- ✓ Village location

Asking Price £95,000

Harris Shields Collection

Harris Shields Collection, 14 Promenade, Bridlington East Yorkshire, YO15 2PX

01262 601704

estateagents@harris-shieldscollection.uk

<https://harris-shieldscollection.uk/>

Situated in the popular village of Carnaby, just on the outskirts of Bridlington, this deceptively spacious three-bedroom ground floor flat offers well-proportioned accommodation with excellent potential for improvement—ideal for buyers looking to put their own stamp on a property.

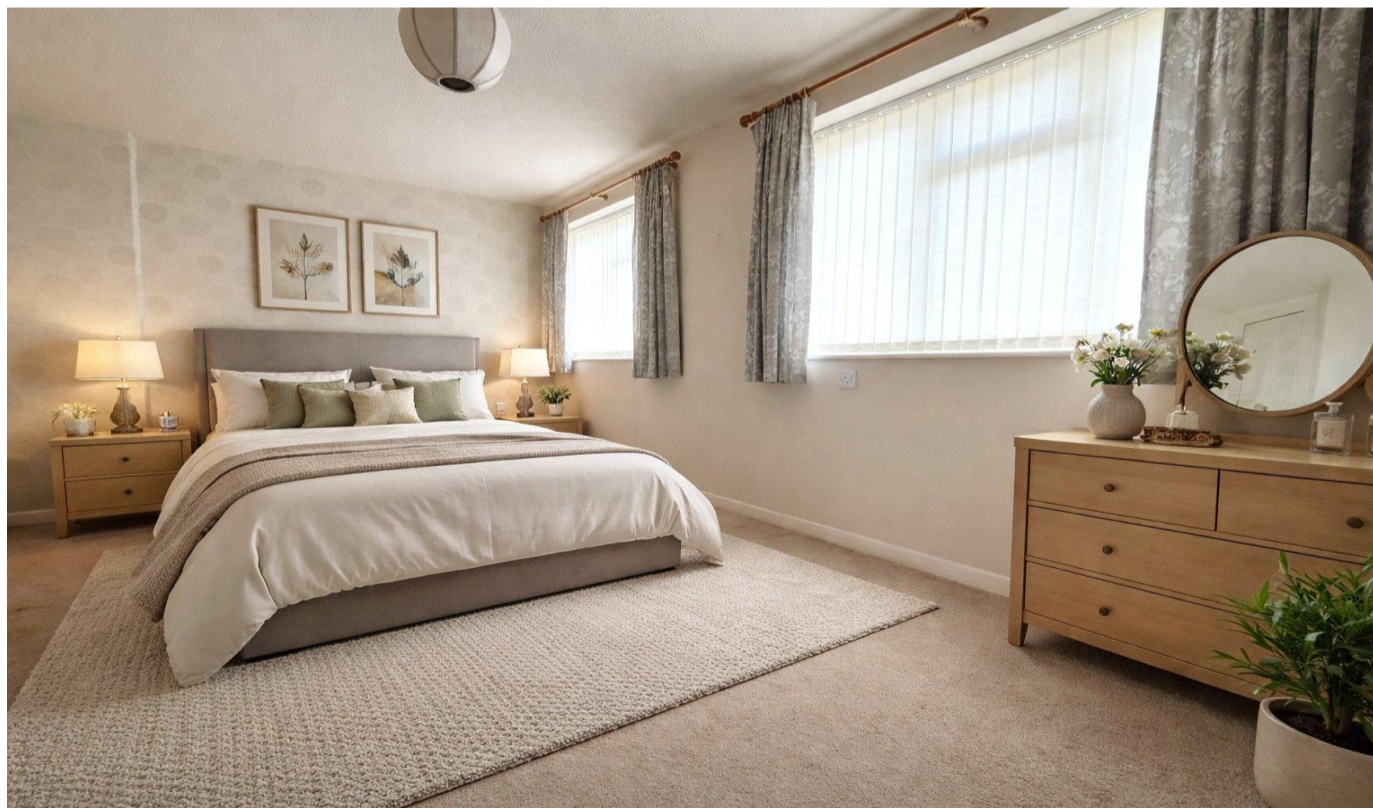
The flat features a generous layout throughout, briefly comprising an entrance hall, a bright and airy living room, a fitted kitchen, three bedrooms, (one with en suite) and a bathroom. While the property would benefit from some general updating and redecoration, it provides a fantastic opportunity to create a comfortable and personalised home.

Externally, there are well-kept communal gardens for residents to enjoy, along with the added benefit of a resident car park.

The property is leasehold with an annual ground rent and maintenance charge of approximately £400, which includes buildings insurance—making for straightforward ongoing costs. Located in a convenient and well-regarded village setting, with easy access to Bridlington's amenities, transport links, and coastline, this property combines space, potential, and location. Early viewing is recommended to appreciate the size and opportunity on offer.

Please note: some images have been enhanced using AI to illustrate the property's potential and may not reflect its current condition.

Council tax band A



Opening doors
for over 60 years

Harris Shields
Collection