

GROUND FLOOR (87.3 sq.m.) approx. 940 sq.ft.



2 Lamp Post Cottage, Trinity Mews, Bridlington, East Riding of Yorkshire, YO15 2HA

Harris Shields Collection

Modern 2-bed ground floor apartment with en-suites & garden in

- ✓ Modern Coastal Living
- ✓ Space, Style & Comfort
- ✓ Contemporary Living in Bridlington
- ✓ Private Garden, Modern Living
- ✓ Coastal Comfort, Modern Design
- ✓ Stylish Living Made Simple
- ✓ A Modern Ground Floor Retreat

Asking Price £150,000

Harris Shields Collection

Harris Shields Collection, 14 Promenade, Bridlington East Yorkshire, YO15 2PX

01262 601704

estateagents@harris-shieldscollection.uk

<https://harris-shieldscollection.uk/>

A beautifully presented two-bedroom ground floor apartment in Bridlington, offering spacious and modern living throughout. The property features two well-proportioned bedrooms, both benefiting from their own en-suite bathrooms, providing excellent comfort and privacy. Finished in a modern décor and well maintained throughout, the apartment is ready for immediate occupation.

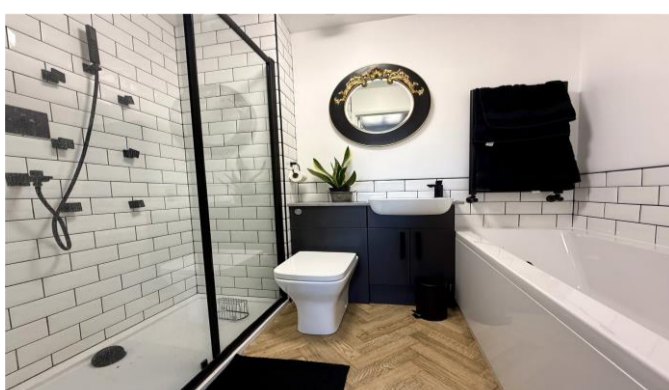
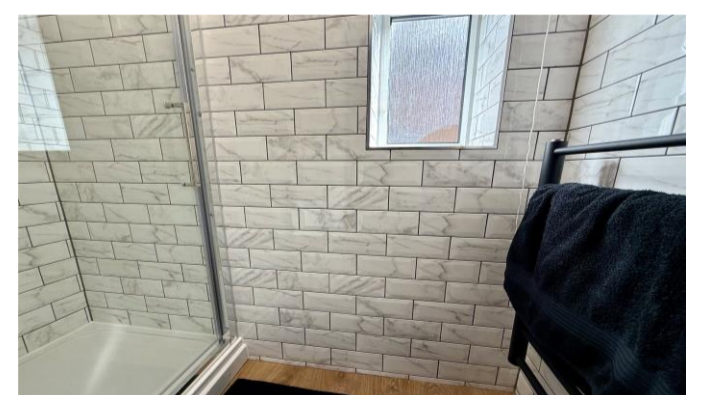
At the heart of the home is a stylish dining room with patio doors opening directly onto a private garden, creating an ideal space for indoor-outdoor living. A separate lounge offers a comfortable and relaxing reception area, while the well-appointed kitchen is complemented by a separate utility room, adding valuable convenience.

Externally, the property benefits from a private garden, perfect for seating, entertaining, or simply enjoying outdoor space in a peaceful setting.

Situated in Bridlington, this apartment would suit a range of buyers including those seeking low-maintenance living, downsizers, or investors looking for a strong rental opportunity in a popular coastal location.

No Chain.

Council tax band A



Opening doors
for over 60 years

Harris Shields
Collection