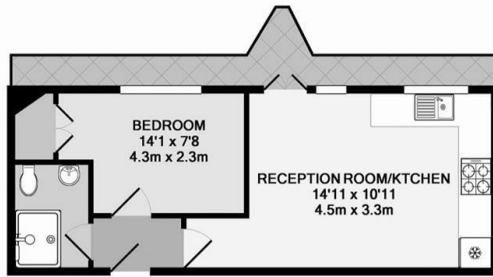




Harrowby Court, Marylebone, London W1H

Price Guide £550,000

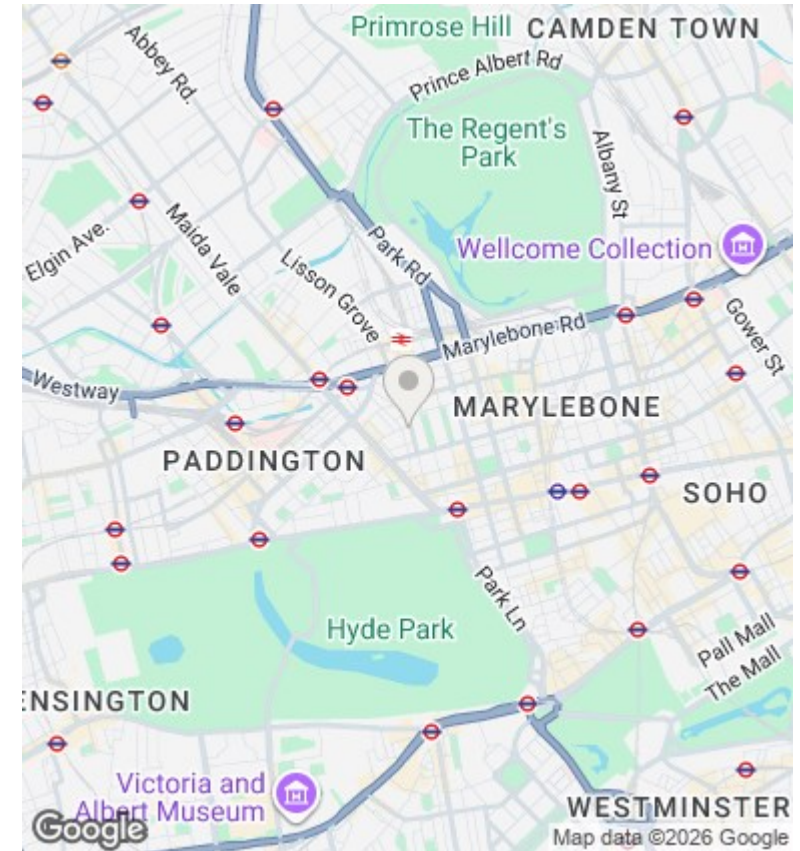
- 1 Bedroom / 1 Bathroom
- Situated on the fifth floor
- Short walk to Oxford Street
- Bright South Facing Aspect
- Excellent Marylebone location
- Lift
- Hyde Park and Regent Park close-by



FIFTH FLOOR, HARROWBY COURT, HARRWOBY STREET, LONDON W1H
TOTAL APPROX. FLOOR AREA 323 SQ.FT. (30.0 SQ.M.)

Whilst every attempt has been made to ensure the accuracy of the floor plan contained here, measurements of doors, windows, rooms and any other items are approximate and no responsibility is taken for any error, omission, or mis-statement. This plan is for illustrative purposes only and should be used as such by any prospective purchaser. The services, systems and appliances shown have not been tested and no guarantee as to their operability or efficiency can be given

Made with Metropix ©2016



Directions

Viewings

Viewings by arrangement only. Call 02070990800 to make an appointment.

Council Tax Band

C

EPC Rating:

D

Energy Efficiency Rating		Current	Potential
<i>Very energy efficient - lower running costs</i>			
(92 plus) A			
(81-91) B			
(69-80) C			78
(55-68) D		62	
(39-54) E			
(21-38) F			
(1-20) G			
<i>Not energy efficient - higher running costs</i>			
England & Wales		EU Directive 2002/91/EC	