



Flat 10, Harrowby Court Harrowby Street, London, W1H 5FA

Offers In The Region Of £2,000,000

- 3 Double Bedroom / 2 Bathroom (1 ensuite)
- Lift access
- Short walk to Oxford Street
- Large reception
- Excellent Marylebone location
- Abundance of nature light
- Hyde Park and Regent Park close-by

Flat 10, Harrowby Court Harrowby Street, London W1H 5FA

Fantastic opportunity to create your own dream home! Nestled in the heart of Marylebone, London, lateral , bright 3 bedroom apartment at Harrowby Court offers a delightful blend of classic elegance and modern comfort. Spanning an impressive 1,464 square feet, this spacious residence features three well-appointed bedrooms, making it an ideal home for families or professionals seeking ample living space.

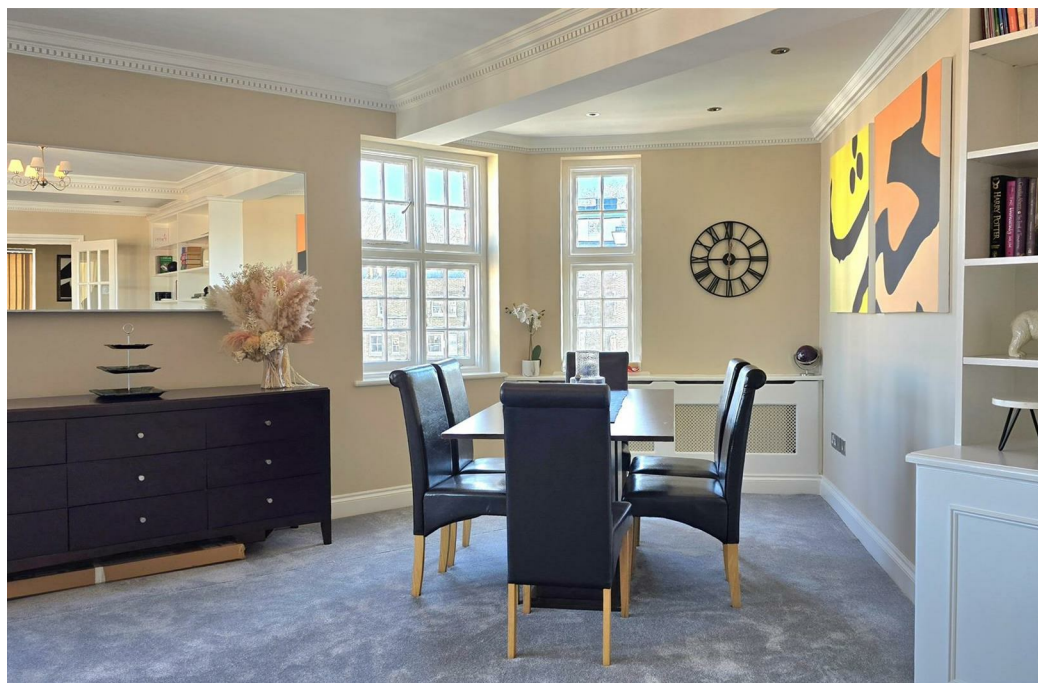
The property boasts a generous double reception room, perfect for entertaining guests or enjoying quiet evenings in. With two bathrooms, convenience is at the forefront, ensuring that morning routines and guest visits are effortlessly accommodated.

Harrowby Court, a pre-1914 building, exudes character and historical charm, reflecting the rich architectural heritage of the area. Residents will appreciate the unique features that come with a property of this age, while also enjoying the benefits of contemporary living.

Situated in the vibrant Marylebone district, this flat is surrounded by an array of amenities, including boutique shops, cafes, and restaurants, all within easy reach. The excellent transport links nearby make commuting to the City or exploring the wider London area a breeze.

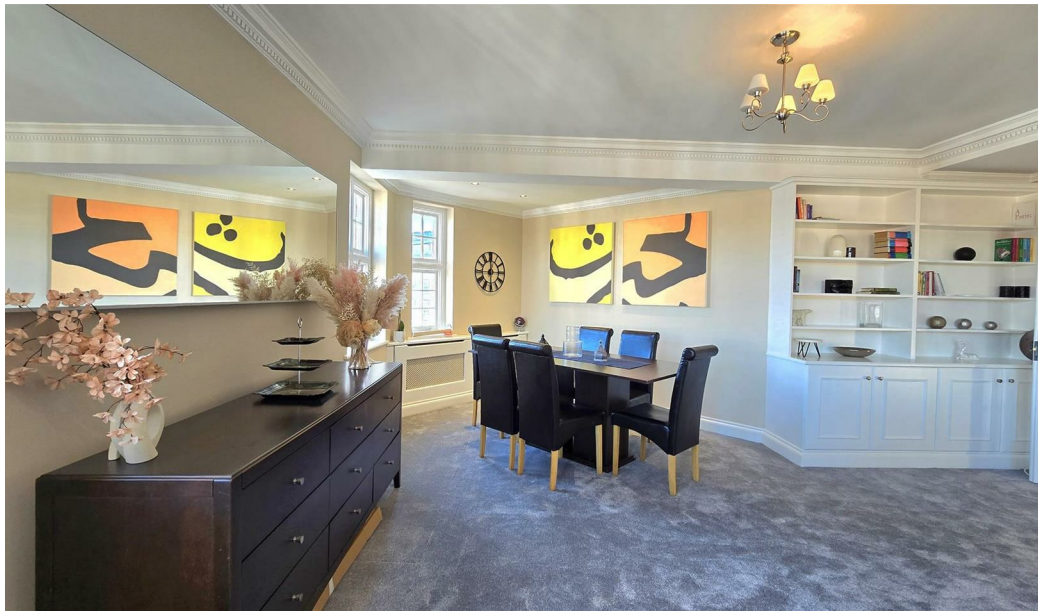


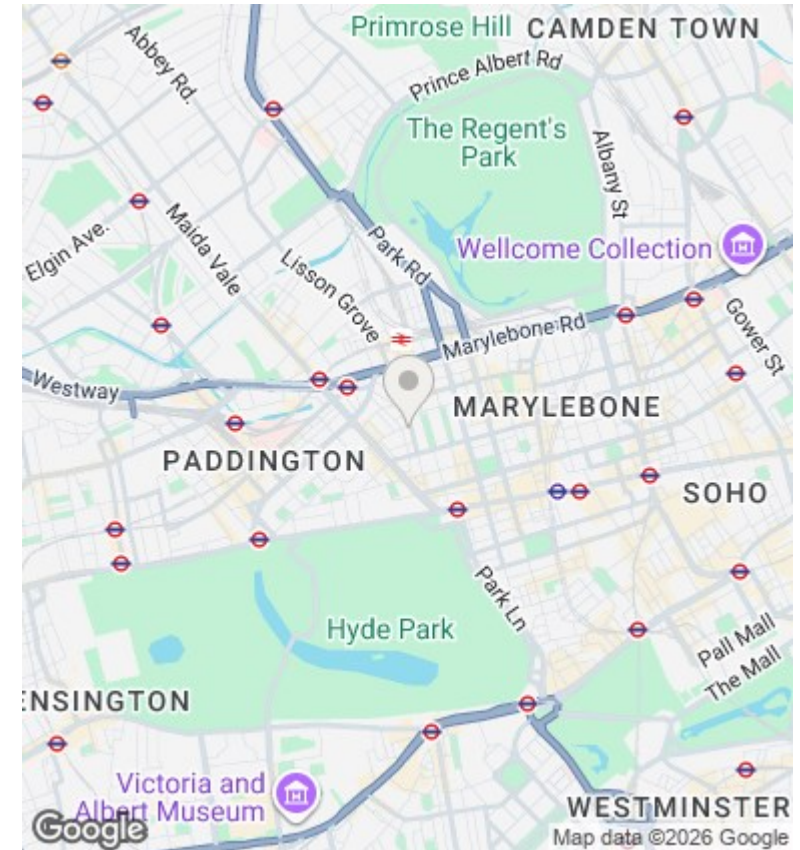
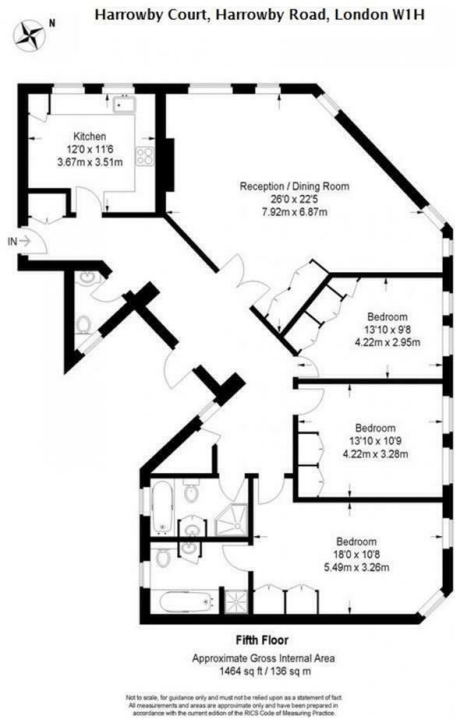
Council Tax Band: F











Directions

Viewings

Viewings by arrangement only. Call 02070990800 to make an appointment.

Council Tax Band

F

Energy Efficiency Rating		
	Current	Potential
<i>Very energy efficient - lower running costs</i>		
(92 plus) A		
(81-91) B		82
(69-80) C		
(55-68) D	57	
(39-54) E		
(21-38) F		
(1-20) G		
<i>Not energy efficient - higher running costs</i>		
England & Wales	EU Directive 2002/91/EC	