

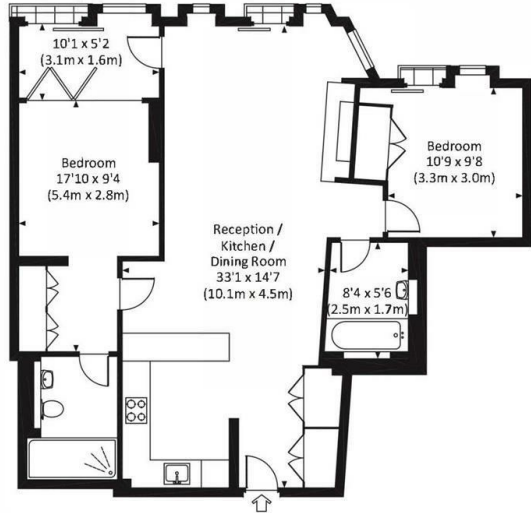


3 Merchant Square, London W2

£1,140 Per Week

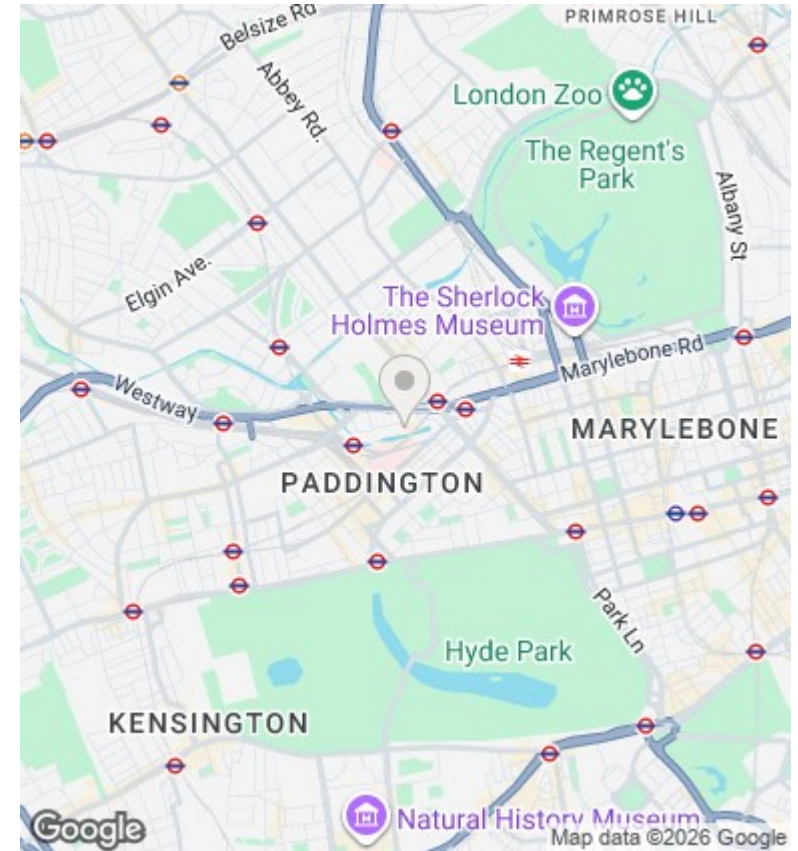
- Spacious 949 sq ft modern apartment in the heart of London
- Prime Central London location with excellent access to shops, restaurants, and transport
- Close to green spaces and parks for a perfect work-life balance
- A perfect opportunity for those seeking luxury, space, and city living

Approx. gross internal area
945 Sq Ft. / 88.2 Sq M.



SEVENTH FLOOR

All measurements have been made in accordance with BS2 Code of Measuring Practice which are approximate only and are for information purposes. For the avoidance of doubt, double doors are shown in red. Not for sale for any other use. © 2025 www.letsproperties.com 020 7099 0800



Directions

Viewings

Viewings by arrangement only. Call 02070990800 to make an appointment.

Council Tax Band

F

EPC Rating:

B

| Energy Efficiency Rating | | |
|---|-------------------------|-----------|
| | Current | Potential |
| Very energy efficient - lower running costs | | |
| (92 plus) A | | |
| (81-91) B | 84 | 84 |
| (69-80) C | | |
| (55-68) D | | |
| (39-54) E | | |
| (21-38) F | | |
| (1-20) G | | |
| Not energy efficient - higher running costs | | |
| England & Wales | EU Directive 2002/91/EC | |