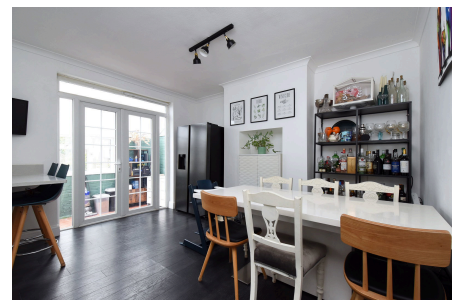


## Cranston Road, London, SE23 2EY

Offers Over £750,000

3 1 1



A three bedroom 1930s end of terrace family home, with driveway parking, a double garage and a SW facing garden measuring over 135ft., located just half a mile away from Forest Hill station and close to several sought after primary schools, within Kilmorie Primary school catchment area.

Well presented throughout, the accommodation on the ground floor comprises a reception room with a feature fireplace, a modern open plan kitchen dining room, and a conservatory. Upstairs are three bedroom, the larger two both benefiting from built in wardrobes, and a modern family



bathroom suite with a roll top bath and a separate shower. The property offers plenty of scope to extend in to the loft space and at the rear.

At the rear of the house, the garden measures over 135ft in length and is SW facing. The garden has a large paved seating area, leading to a lawn and pathway, which leads on to another section of the garden which has a pond and raised planters and a second l

## Key Features

- Three Bedroom Family Home
- Double Garage
- 0.5 Miles of Forest Hill Station
- Potential To Extend
- Modern Bathroom Suite
- Driveway Parking
- 135ft SW Facing Garden
- Close to Primary Schools
- Modern Kitchen Dining Room
- EPC Awaited

