



11 Borough Road, Torquay – TQ1 4QW
£225,000

 **ABSOLUTE**
SALES & LETTINGS





11 Borough Road

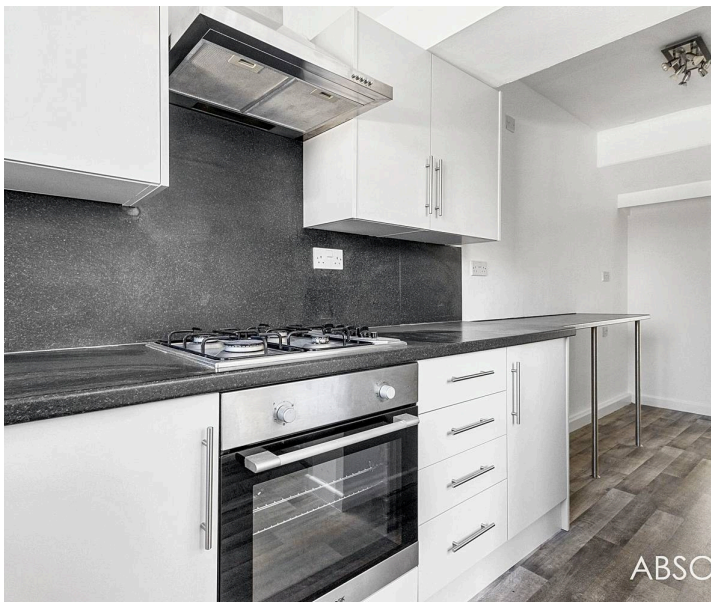
Torquay, Torquay

Attractive bay-fronted home in popular St Marychurch area, freshly redecorated. Spacious sitting & dining rooms, extended kitchen. 2 double bedrooms, landscaped garden. No onward chain. Early viewing recommended. Council Tax band: B

Tenure: Freehold

EPC Energy Efficiency Rating: D

EPC Environmental Impact Rating: D



11 Borough Road

Torquay, Torquay

Borough Road offers an ideal setting for enjoying the best of town and coastal living. Just a short stroll from the vibrant heart of St Marychurch, residents benefit from easy access to the pedestrian shopping precinct, banking services, schools, churches of various denominations, and excellent public transport links. The area is also home to Torquay Golf Club and provides direct access to the scenic South West Coast Path, which winds its way along the coastline towards Maidencombe. Perfect for those drawn to a seaside lifestyle, Torquay boasts stunning coastal views, clean beaches, and calm sailing waters. Alongside the natural beauty, the town offers a wealth of leisure and sporting facilities, a variety of dining options—from casual to fine dining—and a wide selection of shops. St Marychurch is well-positioned within Torquay for convenient access to Newton Abbot, a nearby market town with direct rail connections to London.

Absolute Sales & Lettings

Absolute Sales & Lettings Ltd, 13 Ilsham Road - TQ1 2JG

01803 214214

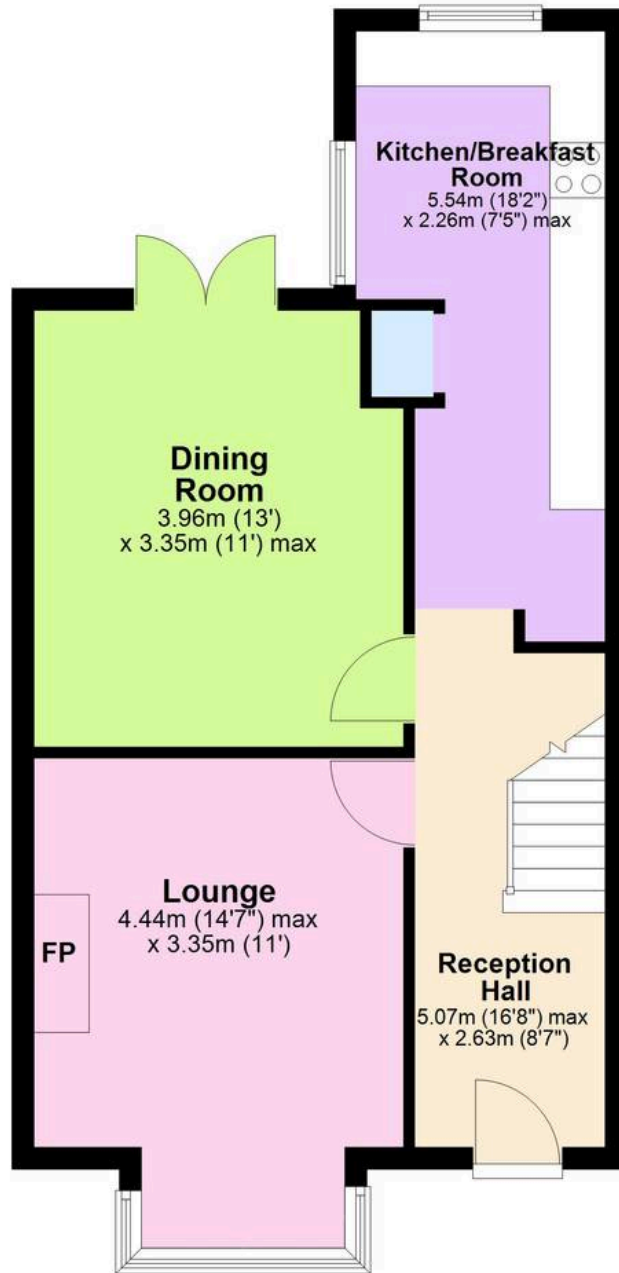
torquay@movewithabsolute.co.uk

movewithabsolute.co.uk/



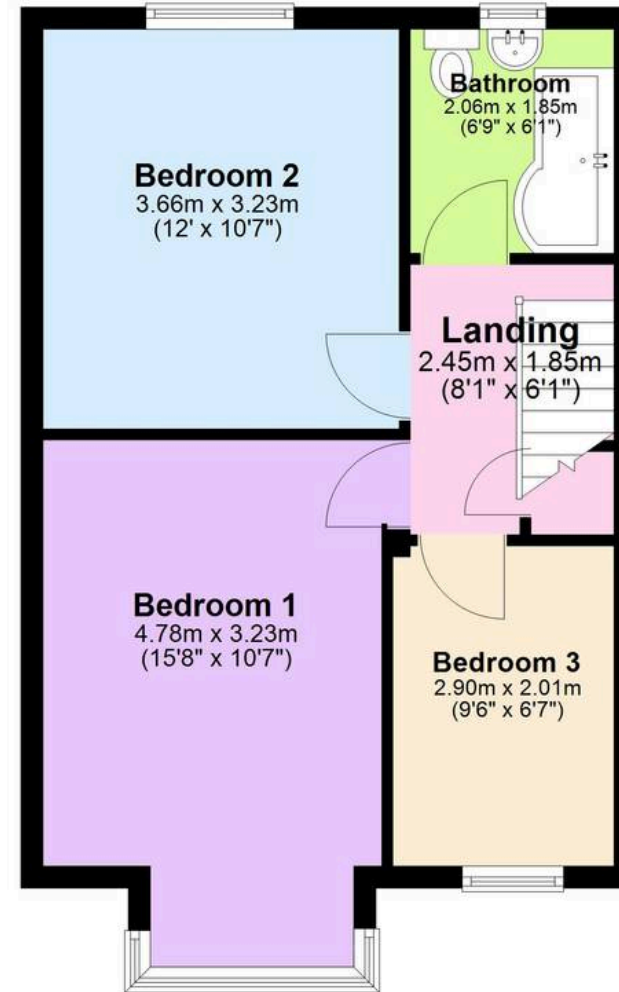
Ground Floor

Approx. 51.1 sq. metres (550.2 sq. feet)



First Floor

Approx. 41.1 sq. metres (442.7 sq. feet)



Total area: approx. 92.2 sq. metres (992.9 sq. feet)

