



4 Skye Close, Torquay - TQ2 7DT
£360,000





4 Skye Close

Torquay, Torquay

Spacious 4 bed detached family home in a quiet corner position with open outlook, driveway, garage, level rear garden backing woodland, and no onward chain.

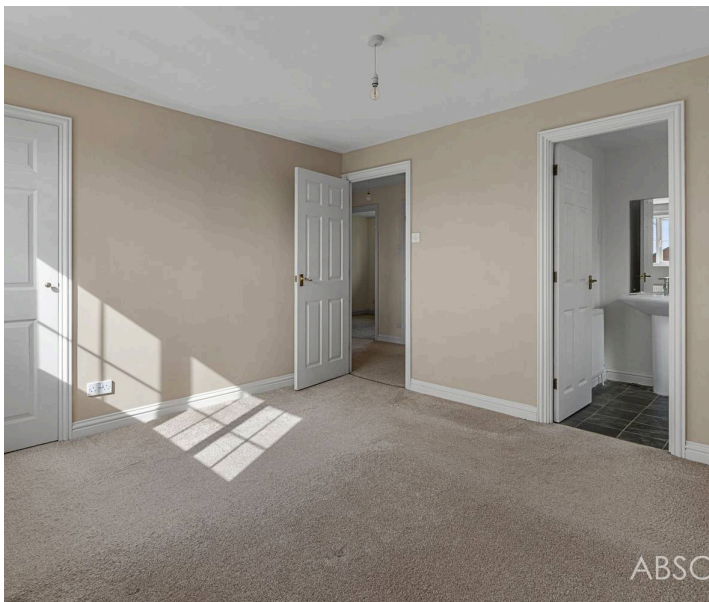
Council Tax band: E

Tenure: Freehold

EPC Energy Efficiency Rating: C

EPC Environmental Impact Rating: D

- Four bedroom detached family home
- Quiet corner position in Skye Close
- Open outlook to the front
- Spacious lounge with French doors
- Large kitchen breakfast room
- Separate dining room
- En-suite to principal bedroom
- Driveway parking and single garage
- Level rear garden backing woodland
- No onward chain



4 Skye Close

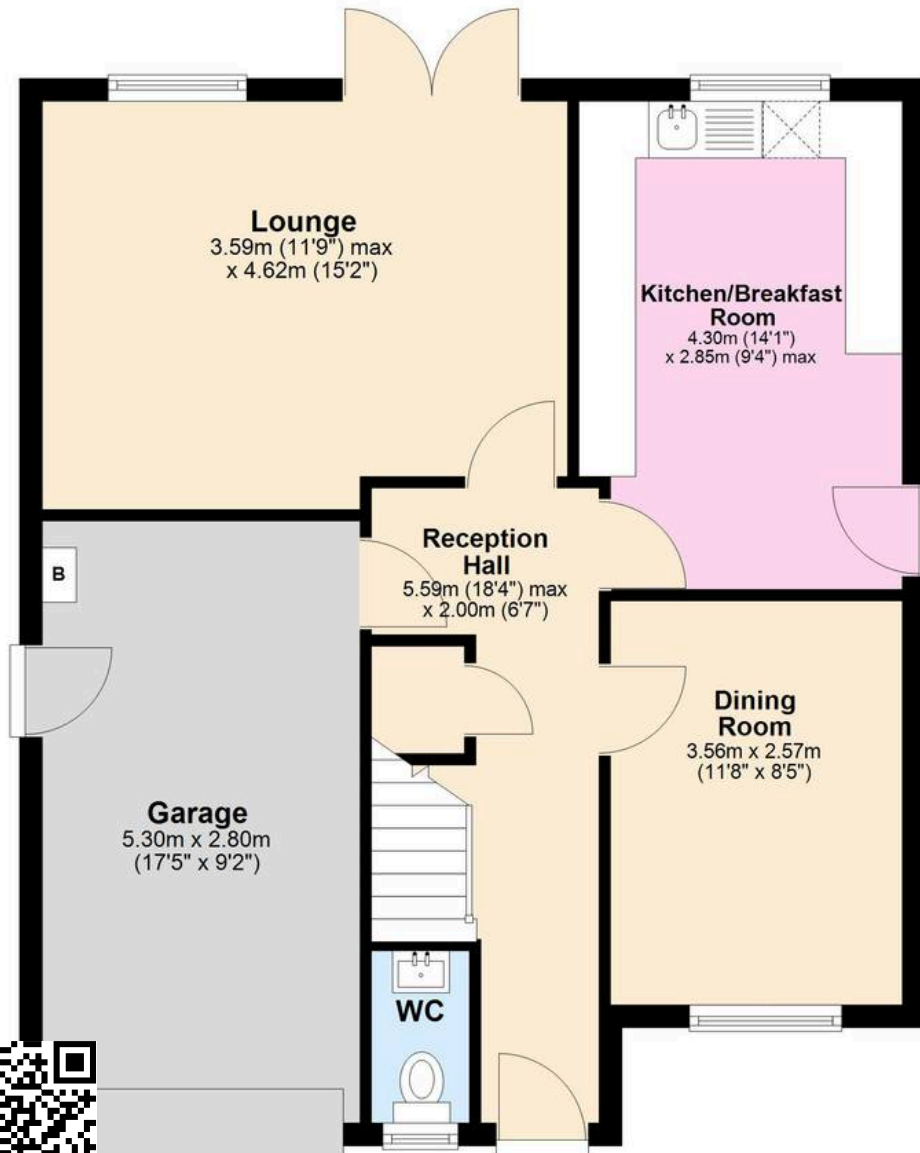
Torquay, Torquay

Skye Close sits within the popular Willows/Shiphay side of Torquay, a spot that works especially well for families and commuters thanks to its convenience and access to amenities. The Willows retail area is nearby with major day-to-day shopping including Marks & Spencer and Sainsbury's, while Wren Retail Park adds further well-known stores close at hand. The area also benefits from straightforward access to Torbay Hospital and the South Devon Highway, making travel in and out of Torbay far easier for those commuting towards Newton Abbot, Exeter and beyond. For families, the location is well placed for a range of schooling options. Shiphay Learning Academy and Watcombe Primary School are both nearby, while the area is also convenient for Torquay Boys' Grammar School, Torquay Girls' Grammar School and The Spires College. There are also good nearby options for recreation and outdoor time, with Torbay Council's park network including Lindisfarne Park, which offers play equipment and open space for families and dog walkers alike. For rail links, Torre station is accessible for connections across the area, adding another practical advantage to the setting



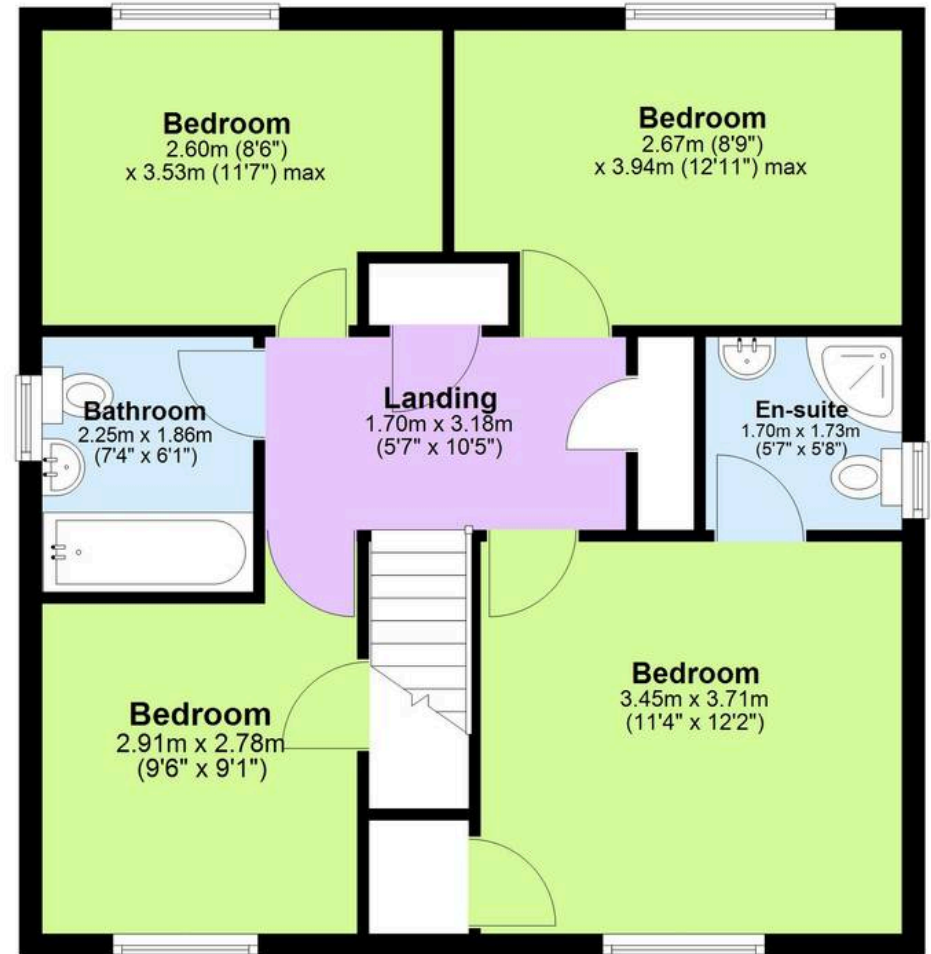
Ground Floor

Approx. 65.3 sq. metres (702.6 sq. feet)



First Floor

Approx. 60.5 sq. metres (651.4 sq. feet)



Total area: approx. 125.8 sq. metres (1354.0 sq. feet)

