



126 Reddenhill Road, Torquay

Torquay

Offers Over £300,000

Enhanced with AI by STREET



## 126 Reddenhill Road

Torquay

Well-presented 3-bed terrace in Babbacombe with a business unit, modern kitchen, private patio garden, gated parking, and close to shops, beaches, parks, and transport. Versatile and investment-ready.

Council Tax band: C

Tenure: Freehold

- 3 bedroom terraced home with income opportunity in sought-after Babbacombe
- Ideally situated close to local amenities & transport links
- Well-proportioned accommodation throughout with the added bonus of a business
- Gated parking and outdoor entertaining space
- Fully separate utilities, both units are independent
- Short walk to beaches, parks, tennis courts etc



## 126 Reddenhill Road

Babbacombe, Torquay

The property is in the middle of Babbacombe which stands out as one of the nicest areas in Torbay with far reaching views towards Teignmouth, Dawlish and Exmouth. The location combines convenience with lifestyle appeal, offering straightforward access to local schools, transport links and the wider English Riviera, making it ideal for both permanent residence and a secure coastal retreat. Torquay Harbour and the marina are nearby, offering waterside dining and leisure facilities. Well regarded schools are close by including Torquay Boys' and Girls' Grammar Schools. Regular bus services connect across Torbay, with Torquay train station providing mainline links to Exeter, Bristol and London Paddington. The A380 South Devon Highway offers direct road access to Exeter and the M5 beyond.

### Absolute Sales & Lettings

Absolute Sales & Lettings, 27 Hyde Road - TQ4 5BP

01803 890110

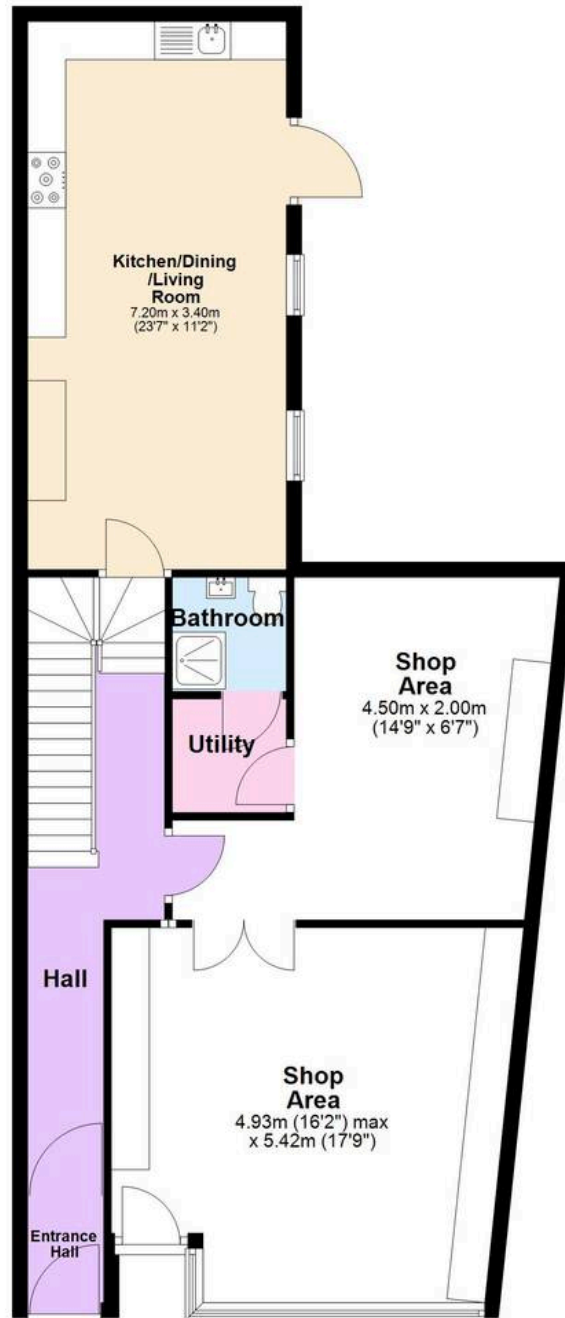
[paignton@movewithabsolute.co.uk](mailto:paignton@movewithabsolute.co.uk)

<http://www.movewithabsolute.co.uk>

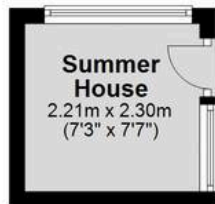


ABS

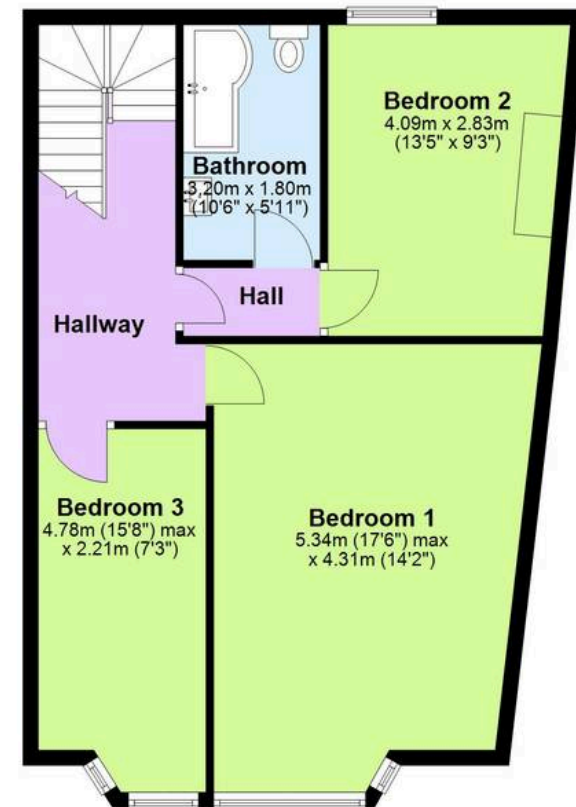
**Ground Floor**  
Approx. 85.6 sq. metres (920.9 sq. feet)



**Outbuilding**  
Approx. 5.1 sq. metres (54.7 sq. feet)



**First Floor**  
Approx. 64.4 sq. metres (693.0 sq. feet)



Total area: approx. 155.0 sq. metres (1668.6 sq. feet)

