



Apt 4 Stapleton House, Thurlow Road, Torquay – TQ1 3DZ
£145,000





Apartment 4 Stapleton House, Thurlow Road

Torquay

Spacious renovated 3-bedroom apartment in a converted Victorian villa with share of freehold, allocated parking, stylish kitchen/diner and over 1,000 sq ft.

Council Tax band: A

Tenure: Leasehold

EPC Energy Efficiency Rating: E

EPC Environmental Impact Rating: E

- Spacious three-bedroom apartment in converted Victorian villa.
- Share of freehold within a well-managed building.
- Renovated throughout and ready to move into.
- Over 1,000 sq ft of generous accommodation
- Superb kitchen/dining room with breakfast bar.
- Separate large lounge with feature fireplace.
- Three double bedrooms, two especially spacious.
- Stylish newly renovated shower room.
- Useful laundry cupboard with stacked appliances.
- Allocated parking plus visitor parking available



Apartment 4 Stapleton House, Thurlow Road

Torquay

Stapleton House is well placed for access to a broad range of local amenities, with nearby shops, cafés, supermarkets and day-to-day services all within easy reach. Torquay offers an excellent mix of coastal living and convenience, with the town centre, harbour, marina and seafront providing a range of restaurants, bars, waterside walks and leisure facilities. For those who enjoy the outdoors, the wider Torbay coastline offers a choice of beaches, coastal paths and green open spaces, with popular beauty spots such as Torre Abbey Sands, Meadfoot, Babbacombe Downs, Anstey's Cove and Cockington Country Park all within reach depending on the exact position of the building. The South West Coast Path gives access to some of the area's most attractive walking routes, while the harbour and marina offer paddleboarding, sailing, boat trips and relaxed waterfront dining.

Absolute Sales & Lettings

Absolute Sales & Lettings Ltd, 13 Ilsham Road - TQ1 2JG

01803 214214

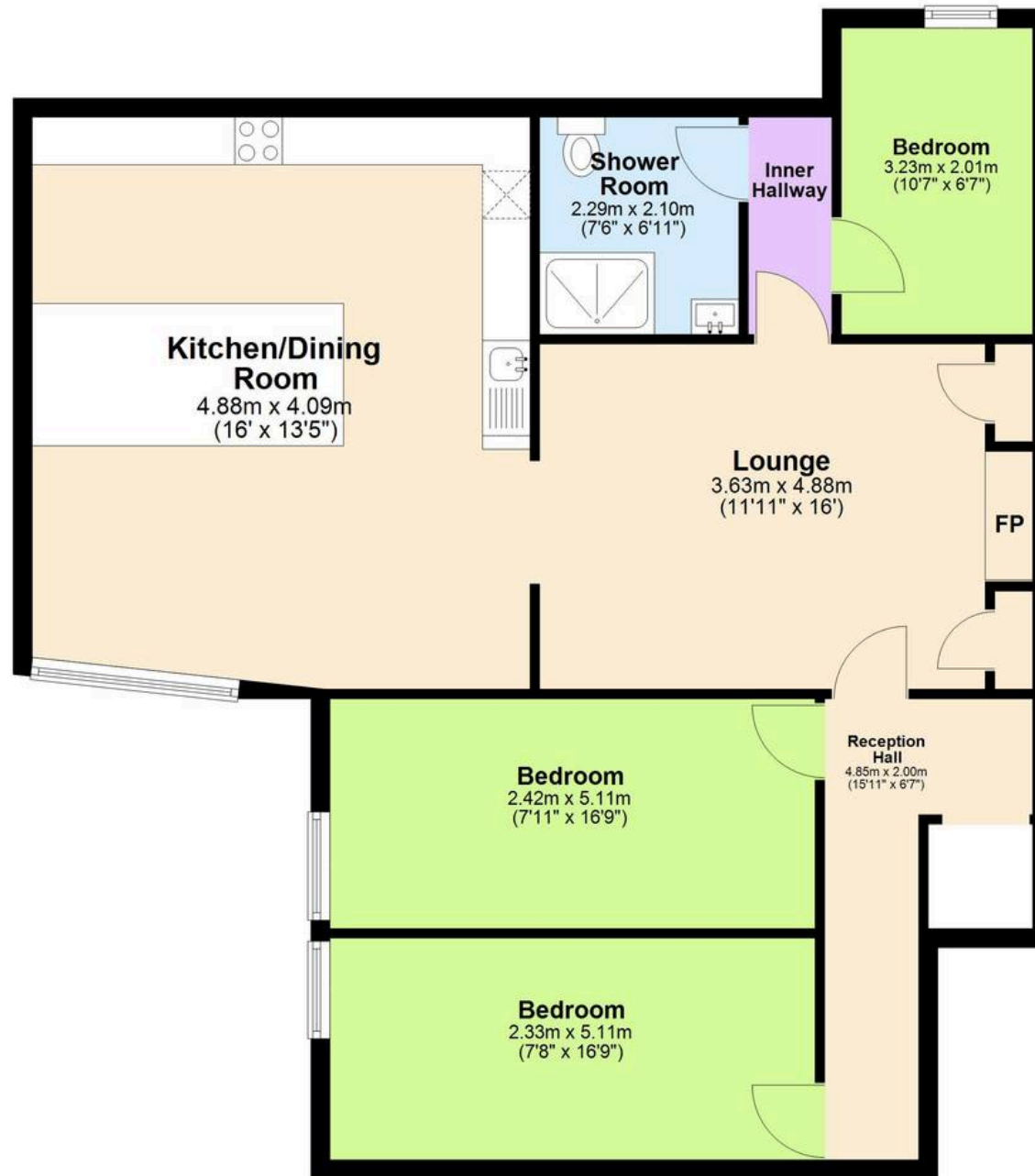
torquay@movewithabsolute.co.uk

movewithabsolute.co.uk/



Ground Floor

Approx. 97.2 sq. metres (1046.7 sq. feet)



Total area: approx. 97.2 sq. metres (1046.7 sq. feet)

