



The Priory Higher Warberry Road, Torquay – TQ1 1SF

Offers Over £570,000





The Priory Higher Warberry Road

Torquay, Torquay

Victoria villa in Wellwood, Torquay. Updated with modern amenities whilst retaining period charm. Features grand reception hall, lounge, dining room, and new kitchen. Four double bedrooms, luxurious bathroom, raised terrace, lawn, garage. Walking distance to shops and cafés on Ilsham Road.

Council Tax band: E

Tenure: Freehold

EPC Energy Efficiency Rating: E

EPC Environmental Impact Rating:

- Substantial Victorian villa in the heart of Wellwood
- Striking reception hallway with central split staircase
- Generous lounge with feature fireplace and tall sash windows
- Formal dining room with chandelier and fireplace
- Practical laundry room with built-in cupboards and additional shower suite
- Four excellent double bedrooms and a luxurious bathroom with roll-top bath
- Newly installed front doors, updated windows, and period wood doors throughout
- Raised terrace with stainless steel balustrade and private lawned garden
- Garage with driveway parking, walking distance to Ilsham Road shops
- Newly fitted Modern kitchen/breakfast room with Quooker tap



The Priory Higher Warberry Road

Torquay, Torquay

The Priory is set in the Wellswood which is sought after for its period ambiance and fine Victorian architecture. It is only a short distance from the village style community of Wellswood where there is a parish church, pub, shops, salons, convenience stores, delicatessen, French patisserie, post office, pharmacy, restaurant and cafes. This location is within easy reach of the harbourside and facilities of the town with local buses available nearby. The beaches at Meadfoot and Anstey's Cove with their waterside cafes are also within easy reach. Torquay is synonymous with the English Riviera on Devon's south coast and has been a popular destination for tourism since the Victorian era. The nostalgic elements of this bygone age are well preserved and the famous pier and classic architecture now blends seamlessly with new contemporary architecture, stylish bars, new hotels, restaurants and the international marina. element.

Absolute Sales & Lettings

Absolute Sales & Lettings Ltd, 13 Ilsham Road - TQ1 2JG

01803 214214

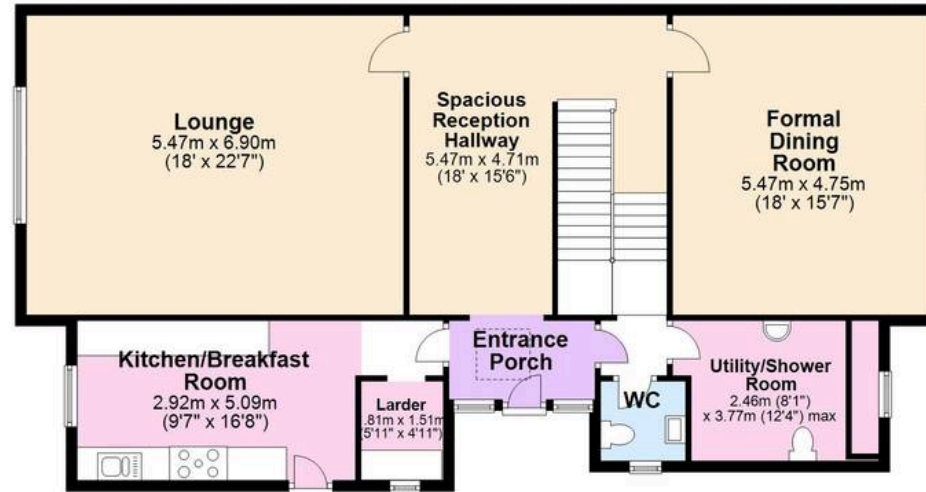
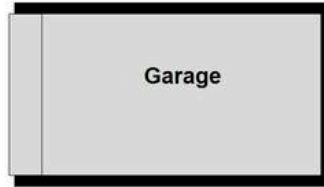
torquay@movewithabsolute.co.uk

movewithabsolute.co.uk/



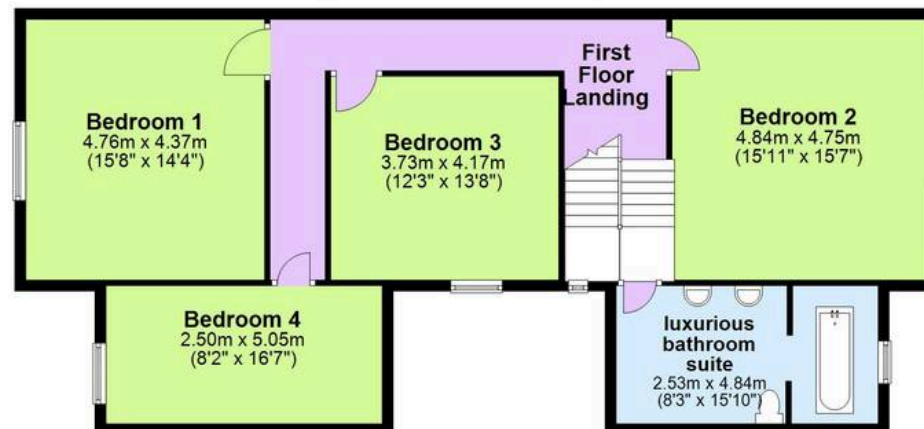
Ground Floor

Approx. 128.4 sq. metres (1382.6 sq. feet)



First Floor

Approx. 105.5 sq. metres (1135.2 sq. feet)



Total area: approx. 233.9 sq. metres (2517.8 sq. feet)

Approx. Plan produced using PlanUp.

