



8 Westhill Road, Paignton

Paignton

£335,000

ABSOLUTE



8 Westhill Road

Paignton, Paignton

Superbly presented 1930's bay fronted 2 bedroom detached bungalow with fabulous sea views. New kitchen & Bathroom. Feature wood burner. Open plan living. Garage and gardens. No onward chain.

Council Tax band: D

Tenure: Freehold

EPC Energy Efficiency Rating: D

EPC Environmental Impact Rating: D

- Beautifully presented and renovated 1930's bay fronted detached bungalow
- Fabulous sea views stretching towards Berry Head
- 2 Bedrooms
- Superb open plan living space boasting lots of natural light
- Stylish kitchen with integrated appliances
- Gas central heating & uPVC double glazing
- Garage/utility room and driveway parking
- Surrounding terraced gardens
- Modern four piece bathroom suite
- No onward chain & viewing highly recommended



8 Westhill Road

Paignton, Paignton

The bungalow is located in a sought after residential area, conveniently located for good access to Paignton town centre which has a choice of shops cafes and restaurants. There are nearby bus services, which connect to the neighbouring towns of Torquay & Brixham. Paignton town centre has a railway station which connects to the mainline station in Newton Abbot.

Absolute Sales & Lettings

Absolute Sales & Lettings, 27 Hyde Road - TQ4 5BP

01803 890110

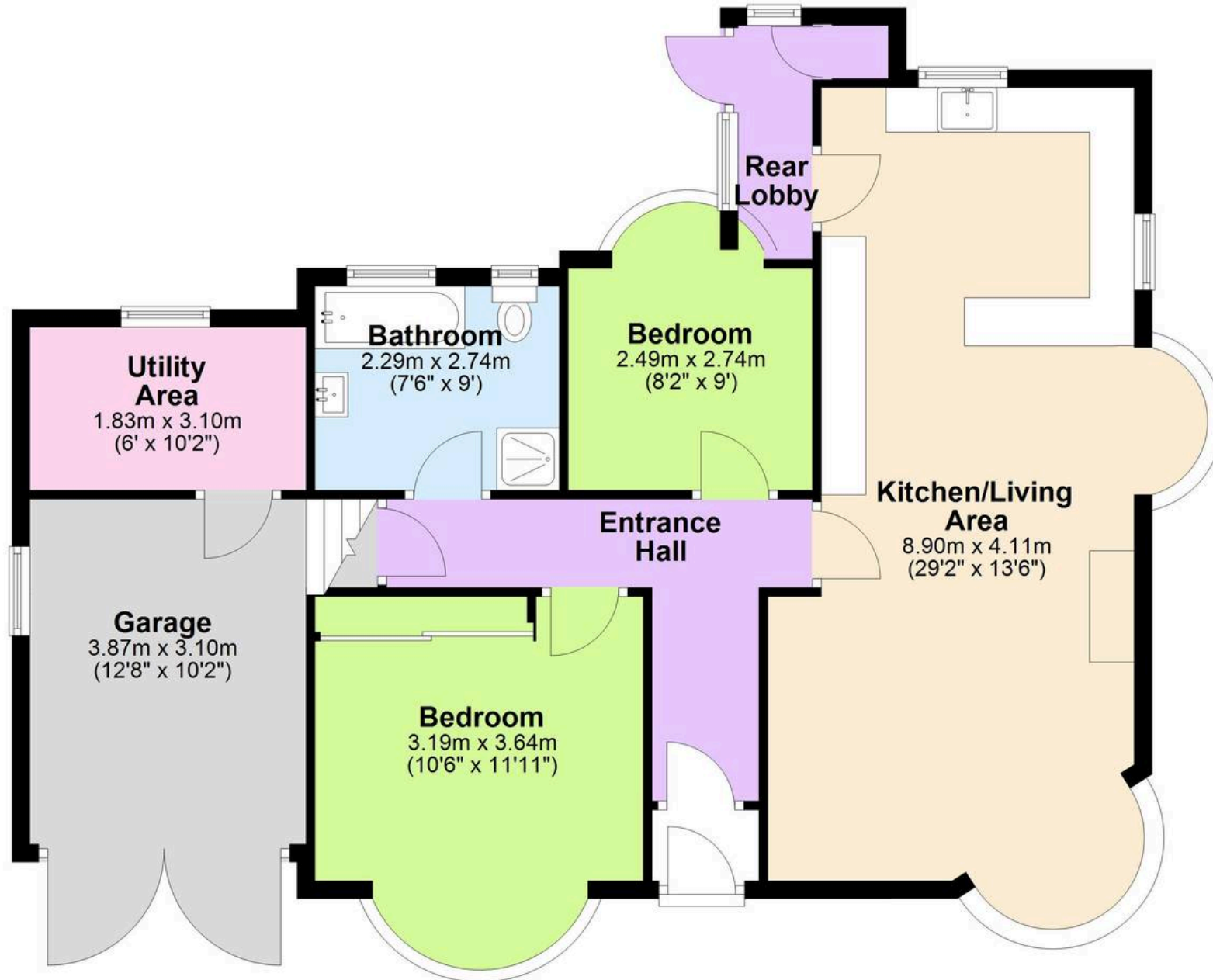
paignton@movewithabsolute.co.uk

<http://www.movewithabsolute.co.uk>



Ground Floor

Approx. 92.6 sq. metres (996.5 sq. feet)



Total area: approx. 92.6 sq. metres (996.5 sq. feet)