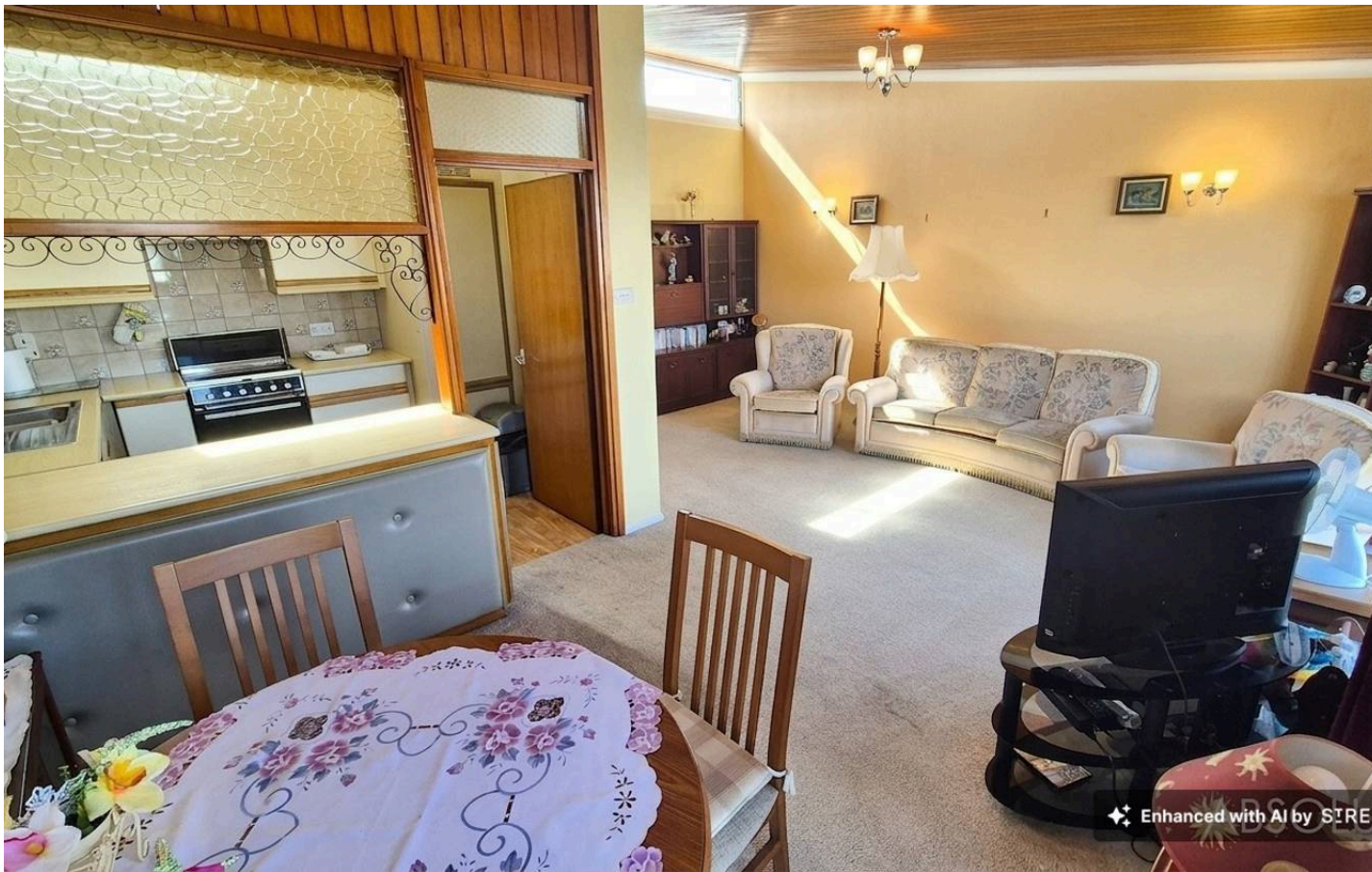




**30 Marina Drive, Brixham – TQ5 9BB**

Guide Price **£320,000**





## 30 Marina Drive

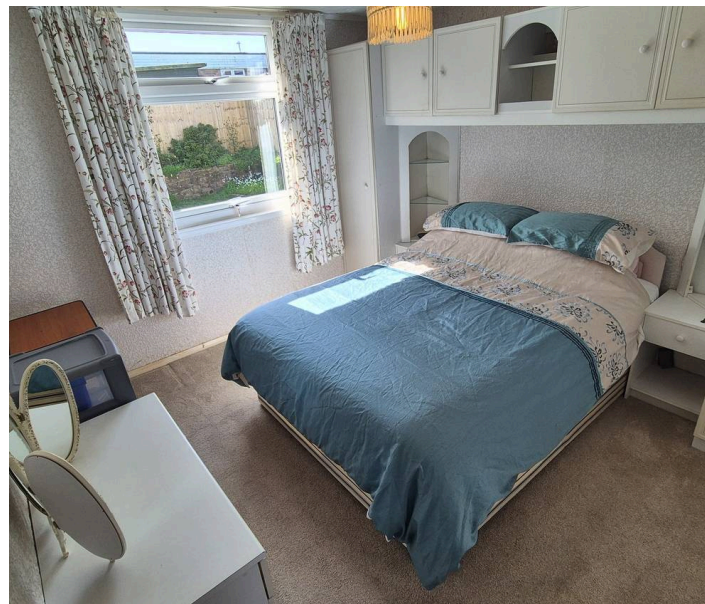
Brixham,

Detached two-bedroom bungalow on Berry Head peninsula with sea views, open plan living, study, car port, driveway, south-facing aspect, and no onward chain. Close to shops and transport.

Council Tax band: D

Tenure: Freehold

- Two bedrooms
- Detached bungalow
- Car port and driveway parking
- Sea views
- Located in the highly desirable Berry Head peninsula in Brixham.
- No onward chain
- Close to bus routes and local shops
- Good size south facing sunny garden
- Study/ garden room
- Large open plan kitchen/lounge diner



# 30 Marina Drive

Brixham, Brixham

The property is situated in the sought after Berry Head area of Brixham just a 1/2 to 3/4 of a mile walk to Brixham town centre where you can find an array of shops, facilities and amenities as well as the picturesque harbour surrounded by a range of boutique shops, bars and restaurants. Both primary and secondary schooling are located within half an hour level walk of the property as is Brixham rugby club and swimming pool. Berry Head nature reserve with its picturesque views and scenic walks is also approximately 1/2 a mile distant.

## Absolute Sales & Lettings

Absolute Sales & Lettings, 36 Fore Street - TQ5 8DZ

01803 214214

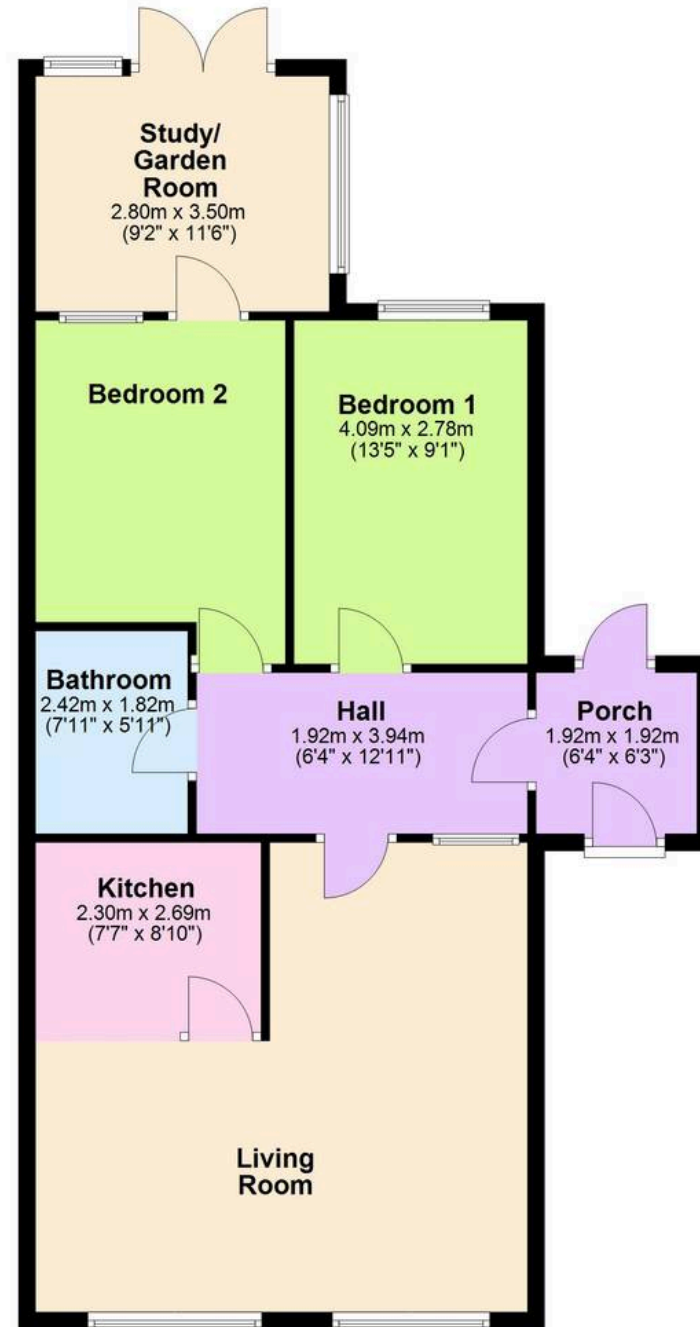
[brixham@movewithabsolute.co.uk](mailto:brixham@movewithabsolute.co.uk)

[movewithabsolute.co.uk/](http://movewithabsolute.co.uk/)



## Ground Floor

Approx. 83.2 sq. metres (895.7 sq. feet)



Total area: approx. 83.2 sq. metres (895.7 sq. feet)

