





Serenity

Whilborough Road, Newton Abbot

North Whilborough, Kingskerswell – Contemporary New England Elegance with Panoramic Countryside Views

Capturing the spirit of a New England-style retreat, this home, aptly named "Serenity," stands as a fine example of contemporary design and cutting-edge style. From its elevated position, it offers simply stunning panoramic vistas over the rolling Devonshire countryside, bringing light and luxury into every corner across its three spacious stories.

This residence is defined by expanses of double-height glass, sleek New England-inspired cladding that's maintenance-free, and a seamless blend of natural materials and modern technology. Inside, you'll find a thoughtfully arranged kitchen and family room, a versatile office (currently a games room), a formal sitting room that doubles as a home cinema with a vaulted ceiling, and breathtaking views of the fields beyond.

The hub of the house is the lower ground-floor family room, which features a built-in pantry, a convenient downstairs cloakroom toilet, and a spacious utility room with additional storage. It really anchors the home's practical and family-friendly layout



With four generous bedrooms, two en-suites, and a flexible study-studio space that could easily become another bathroom, this home adapts effortlessly to family life. The main family bathroom is complemented by underfloor heating and quality finishes throughout.

Outdoors, west-facing gardens feature a natural stone terrace, secluded deck, terraced lawns, and a charming summer house. A double garage at the front ensures secure parking and completes this exceptional offering.

Located in the enviable hamlet of North Whilborough, just outside Kingskerswell, you're perfectly placed for access to both Torbay and Newton Abbot, with its mainline station and links to the A380 leading to the M5 and Exeter.

Design Notes: Clad in a composite that echoes New England clapperboard charm, the home is as practical as it is stylish, with galvanized guttering, a built-in speaker system, central vacuum, and extensive use of solid wood flooring and ceramic tiles. Featured in Ideal Home magazine back in January 2010, it remains a striking example of a standout modern build.



Serenity

Whilborough Road, Newton Abbot

North Whilborough sits in an enviable semi-rural position on the edge of Kingskerswell, surrounded by rolling Devon countryside while remaining perfectly placed for everyday convenience. The village offers swift access to both Torbay and the market town of Newton Abbot, with its mainline railway station, retail amenities and onward links via the A380 to Exeter, the M5 and beyond. Despite its peaceful setting, the coast, beaches and attractions of the English Riviera are all within easy reach, making this an ideal base for those seeking a blend of tranquillity, accessibility and Westcountry lifestyle

Council Tax band: G

Tenure: Freehold

EPC Energy Efficiency Rating: C

EPC Environmental Impact Rating: C

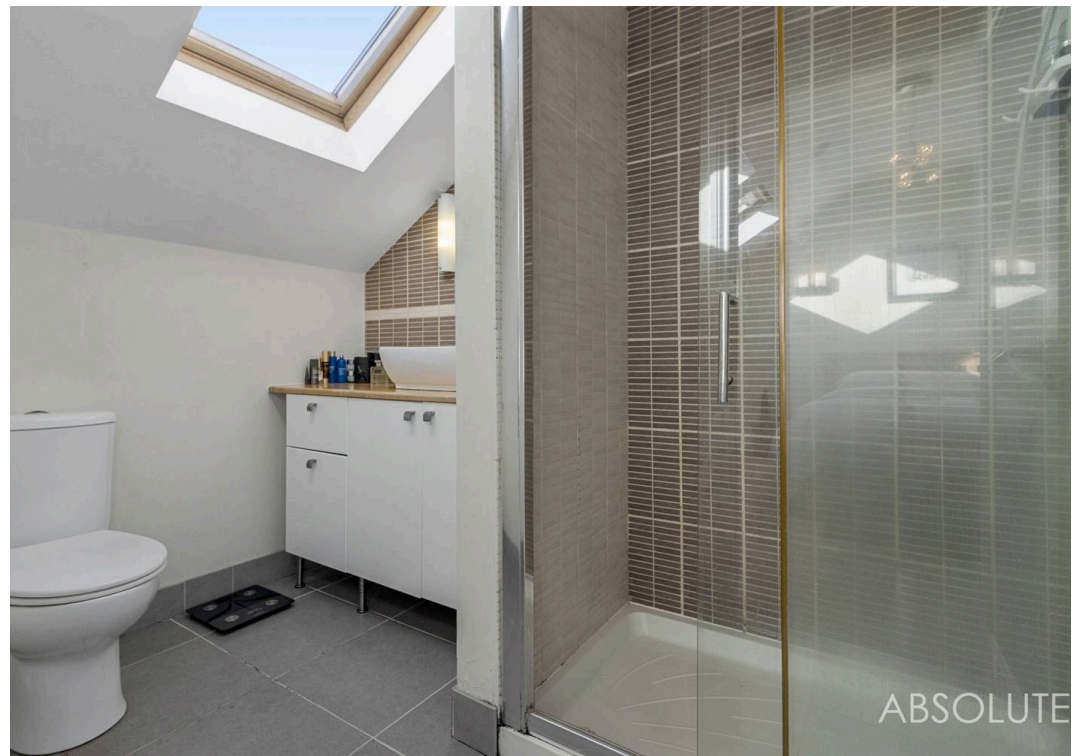


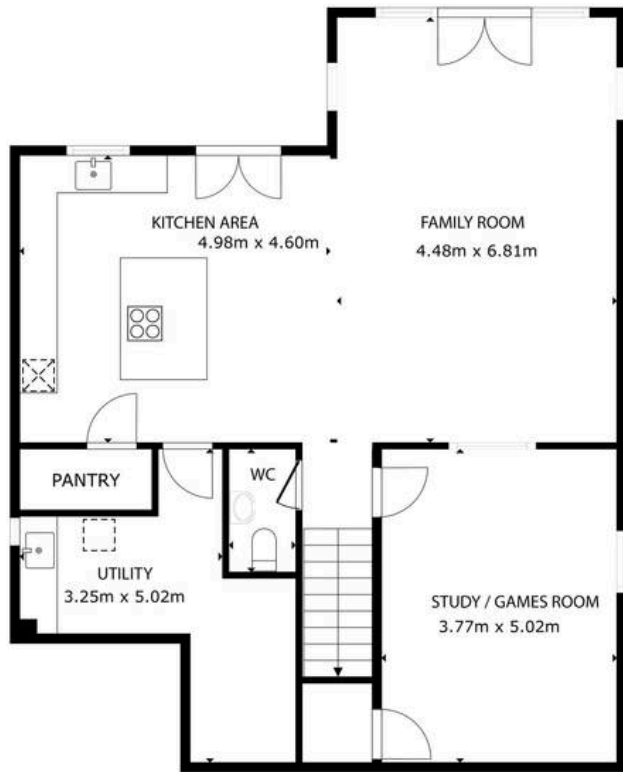
ABSO

ABSOLU

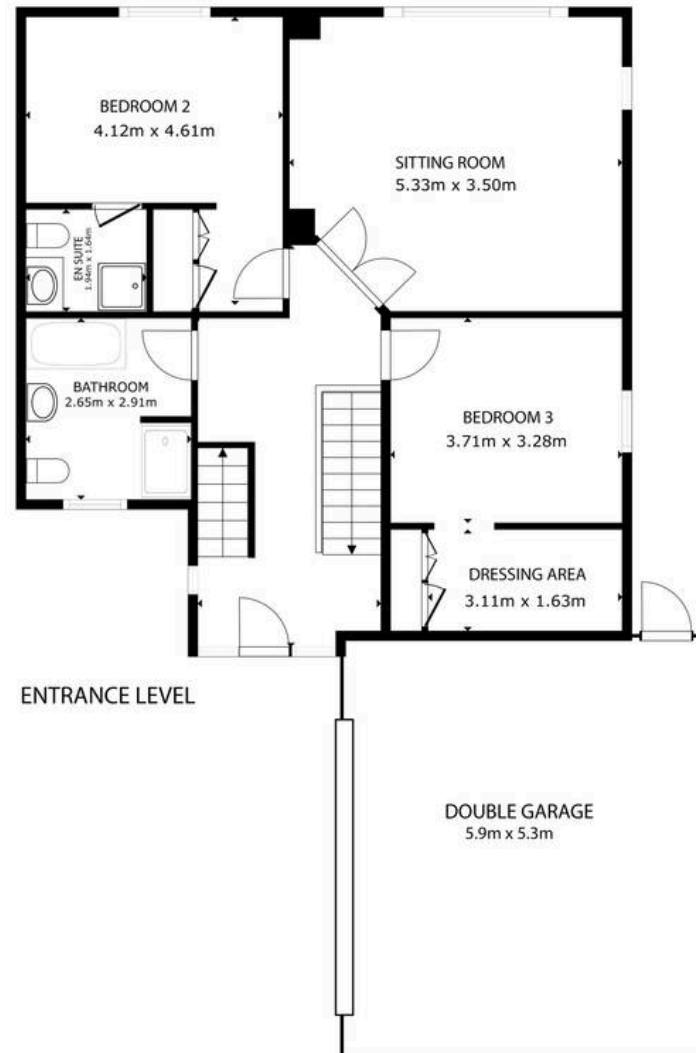


ABSOLUTE

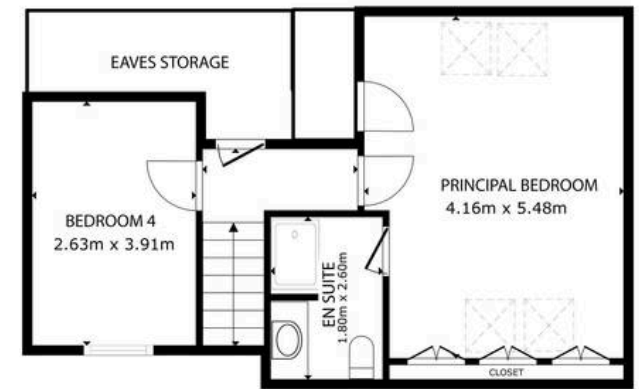




GARDEN LEVEL



ENTRANCE LEVEL



SECOND FLOOR





Absolute Sales & Lettings

Absolute Sales & Lettings Ltd, 13 Ilsham Road - TQ1 2JG

01803 214214

torquay@movewithabsolute.co.uk

movewithabsolute.co.uk/

