



**4 Walcot Place Higher Furzesham Road, Brixham – TQ5 8B.**

Guide Price **£430,000**





## 4 Walcot Place Higher Furzeham Road

Brixham,

Open Day 9th of May 2026 at 1pm! Modern four bedroom townhouse in Furzeham, Brixham. Features open plan living, sea-view balconies, ensuite, parking, and garden. Close to harbour, shops, and green spaces.

Council Tax band: E

Tenure: Freehold

EPC Energy Efficiency Rating: B

EPC Environmental Impact Rating: B

- Four double bedrooms
- Beautifully presented town house
- Balconies with sea views
- Allocated parking spaces
- Log burner
- Easy to maintain garden to the rear with a large storage shed in back garden
- Family bathroom and ensuite shower rooms
- Open plan Kitchen/lounge/diner
- Located near to Brixham town centre and harbour
- Situated in the Furzeham area of Brixham, near shops, local pubs and green space



## 4 Walcot Place Higher Furzeham Road

Brixham,

The property is situated in the popular area of Furzeham area of Brixham approximately 1/3 of a mile walk into the town centre which boasts an array of shops, facilities and amenities as well as the picturesque Brixham harbour surrounded by a range of boutique shops, bars and restaurants. Primary schooling is located at the end of South Furzeham Road and secondary schooling is approximately 1/2 - 3/4 of a mile distant but is visible from the open views from the front of the property. The main bus service can be found in the town centre with connections to the neighbouring towns of Paignton and Torquay. The local Queens Arms public house can be found at the end of South Furzeham Road.

### Absolute Sales & Lettings

Absolute Sales & Lettings, 36 Fore Street - TQ5 8DZ

01803 214214

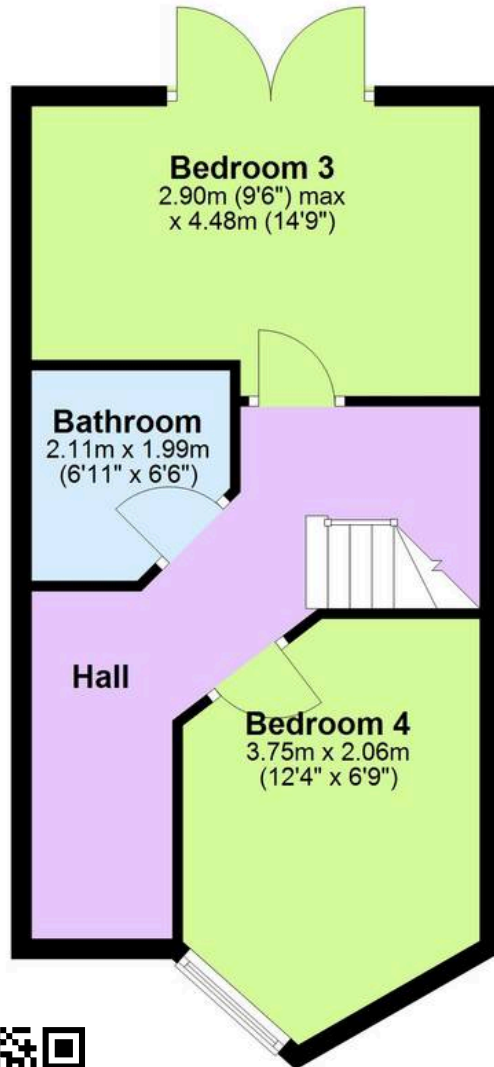
[brixham@movewithabsolute.co.uk](mailto:brixham@movewithabsolute.co.uk)

[movewithabsolute.co.uk/](http://movewithabsolute.co.uk/)



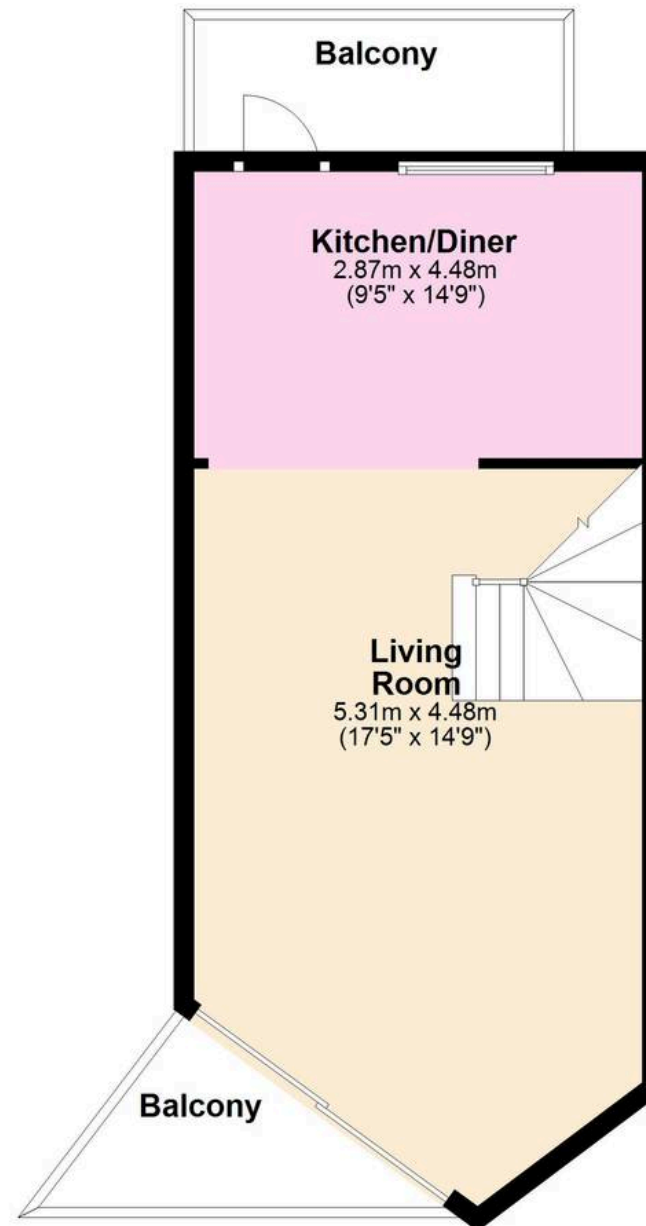
### Ground Floor

Approx. 26.6 sq. metres (286.6 sq. feet)  
(excluding Hall)



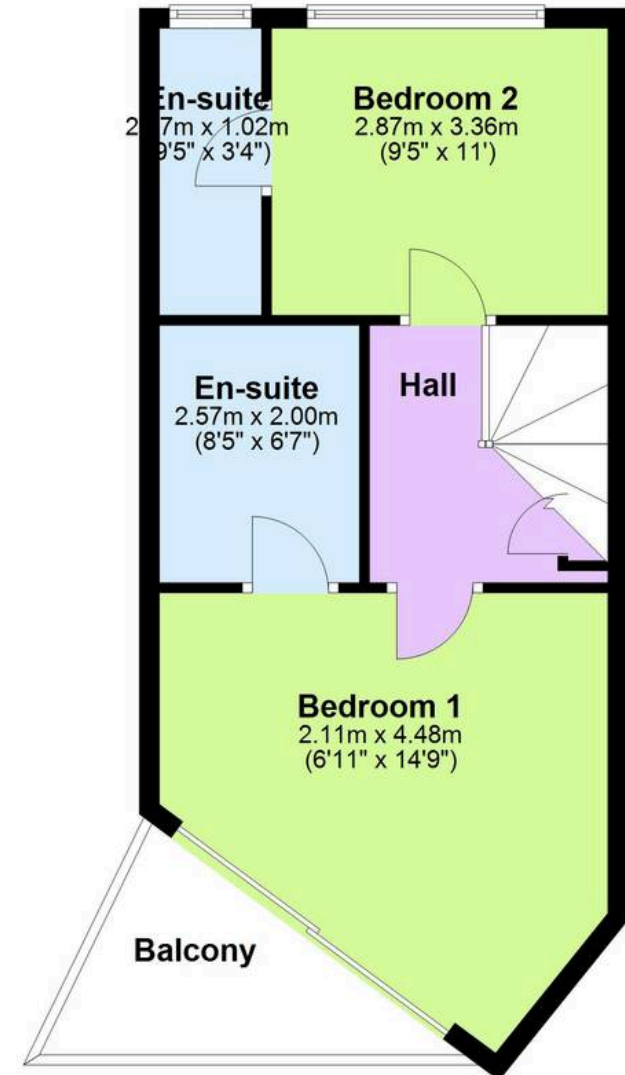
### First Floor

Approx. 42.4 sq. metres (456.7 sq. feet)  
(excluding Balcony, Balcony)



### Second Floor

Approx. 41.0 sq. metres (440.9 sq. feet)  
(excluding Balcony)



Total area: approx. 110.0 sq. metres (1184.2 sq. feet)