



Lyndale Haldon Road, Torquay - TQ1 2LY

Offers Over £640,000





Lyndale Haldon Road

Torquay, Torquay

Contemporary link-detached residence in sought-after Wellwood. Spacious living with 4/5 bedrooms, modern kitchen, principal bedroom with en-suite. Generous garden space, ample parking, and sea views. Ideal for families seeking refined living in a desirable location.

Council Tax band: F

Tenure: Freehold

EPC Energy Efficiency Rating: C

EPC Environmental Impact Rating: D

- Spacious contemporary link-detached residence offering flexible 4/5 bedroom accommodation
- Desirable location in The Lincombes, Wellwood close to village amenities
- Reception hallway complete with a dedicated built-in bar and downstairs cloakroom
- Generous and bright main sitting room
- Quality modern kitchen/breakfast room with central island and built-in appliances
- Two flexible ground-floor bedrooms (ideal for formal dining or guest use)
- Three good-size double bedrooms on the first floor and a modern fitted family bathroom
- Impressive principal bedroom featuring a superb en-suite bathroom
- Ample off-road parking provided by two separate driveways
- Level front and rear gardens with sea views from the rear elevation



Lyndale Haldon Road

Torquay, Torquay

Lyndale sits within the desirable Wellswood area, one of Torquay's most long-established and prestigious residential areas. The Lincombes is known for its elevated position, leafy surroundings and attractive period and modern homes. It offers a peaceful residential feel while still being close to everyday conveniences. Wellswood Village, with its cafés, restaurants, boutique shops, convenience stores and the ever-popular Kent's Cavern, is only a short walk away. The area is well-served by public transport and provides easy access to the harbour, Meadfoot Beach, and Torquay's seafront. Excellent schooling and scenic coastal walks are also nearby, making The Lincombes a highly sought-after and convenient place to live.

Absolute Sales & Lettings

Absolute Sales & Lettings Ltd, 13 Ilsham Road - TQ1 2JG

01803 214214

torquay@movewithabsolute.co.uk

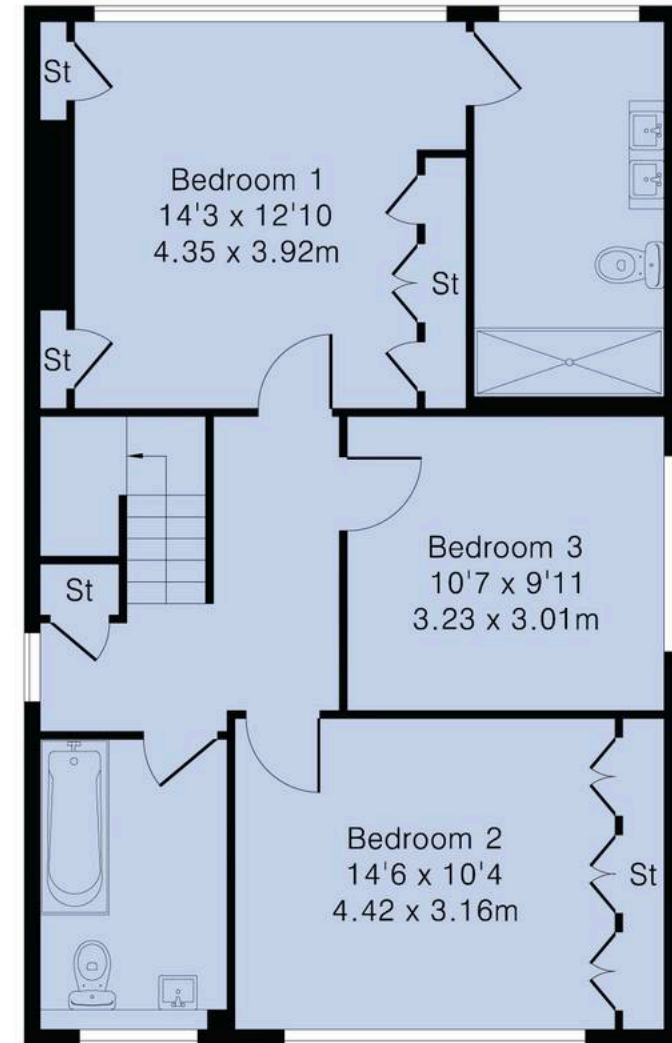
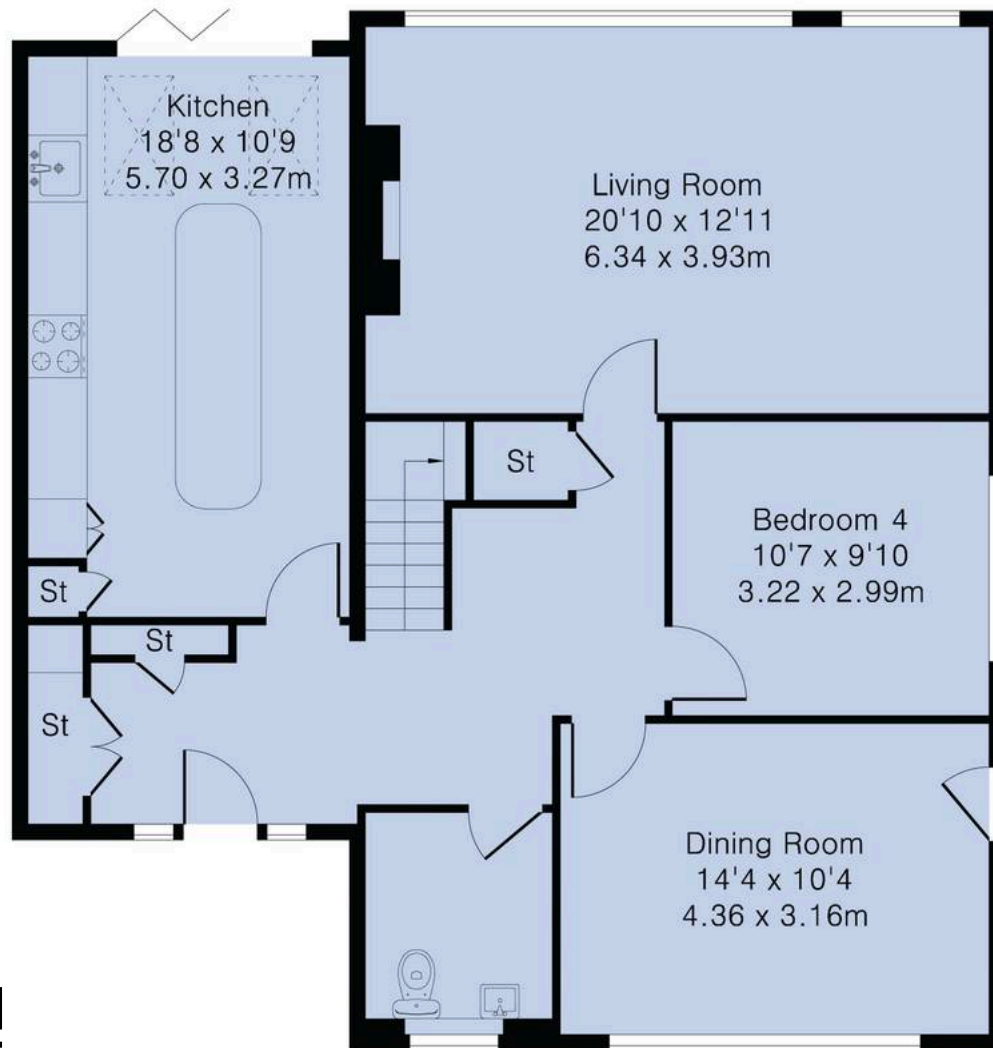
movewithabsolute.co.uk/



Approximate Gross Internal Area 1686 sq ft - 157 sq m

Ground Floor Area 987 sq ft – 92 sq m

First Floor Area 699 sq ft – 65 sq m



Ground Floor

First Floor

