



Flat 2, Drake Court Higher Woodfield Road, Torquay – TQ1

Offers Over **£195,000**





Flat 2

Drake Court Higher Woodfield Road,
Torquay

Spacious 2-bed ground floor apartment in a Victorian villa with open views, modern kitchen, patio & parking. Close to Wellswood & Torquay Harbour. No chain.

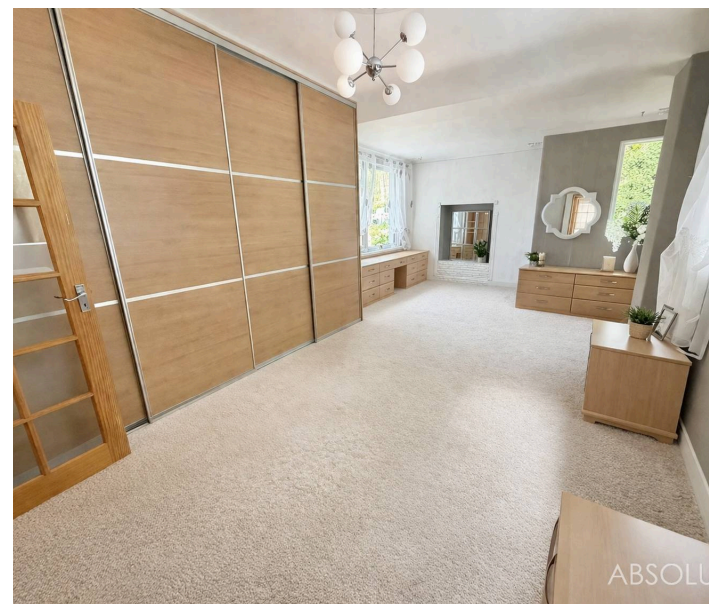
Council Tax band: B

Tenure: Leasehold

EPC Energy Efficiency Rating: C

EPC Environmental Impact Rating:

- Forming part of a gracious Victorian villa
- Ground floor apartment
- Spacious and well-proportioned accommodation
- Two double bedrooms
- Open town views
- Modern kitchen with built-in appliances
- Private patio area
- Allocated parking for one car
- No onward chain
- Gas central heating and UPVC double glazing



Flat 2

Drake Court Higher Woodfield Road,
Torquay

Higher Woodfield Road is situated in a sought after residential area of Torquay, known for its attractive surroundings and convenient access to local amenities. The property lies just a short distance from the prestigious Wellswood area, often referred to as "the village within a town," offering a range of boutique shops, cafés, restaurants, and everyday conveniences. Additionally, the picturesque Torquay Harbour is within easy reach, providing a vibrant waterfront setting with marina views, coastal walks, and an excellent selection of dining and leisure options. The area also benefits from good transport links and access to local beaches, making it an ideal location for both permanent living and holiday use.

Absolute Sales & Lettings

Absolute Sales & Lettings Ltd, 13 Ilsham Road - TQ1 2JG

01803 214214

torquay@movewithabsolute.co.uk

movewithabsolute.co.uk/



Ground Floor

Approx. 94.0 sq. metres (1011.9 sq. feet)



Total area: approx. 94.0 sq. metres (1011.9 sq. feet)

