



26 Trumlands Road, Torquay - TQ1 4RN
£289,950

 **ABSOLUTE**
SALES & LETTINGS





26 Trumlands Road

Torquay, Torquay

A handsome 1930s semi-detached home in sought-after St Marychurch, with character features, 3 bedrooms, spacious kitchen/diner and landscaped gardens

Council Tax band: C

Tenure: Freehold

EPC Energy Efficiency Rating: E

EPC Environmental Impact Rating: E

- Handsome 1930s semi-detached home on sought-after Trumlands Road.
- Short walk from St Marychurch Precinct and local amenities
- Full of period character, including stripped original doors
- Spacious sitting room with bay window and feature fireplace.
- Generous kitchen/dining room ideal for entertaining.
- Modern kitchen with breakfast bar peninsula and integrated appliances.
- Three well-appointed bedrooms, two with built-in wardrobes.
- Separate WC and dual-aspect bathroom with large bath.
- Low-maintenance landscaped rear garden with deck, patio and lawn.
- Useful side utility area with front and rear access.



26 Trumlands Road

Torquay, Torquay

Trumlands Road is a highly regarded residential road in St Marychurch, one of Torquay's most popular and established districts. The property is just a short walk from St Marychurch Precinct, which offers a wide range of independent shops, cafés, pubs, bakeries, convenience stores, pharmacy services and everyday amenities, giving the area a proper village feel. The location is also excellent for access to Babbacombe, where buyers can enjoy Babbacombe Downs, cafés, restaurants, coastal views and access down towards Oddicombe Beach and Babbacombe Beach. Anstey's Cove, the South West Coast Path and other beautiful coastal walks are also within easy reach, making this a particularly appealing area for those who enjoy walking, sea views and outdoor space. Families are well served by nearby schooling, with local primary schools and nurseries within the surrounding area, as well as access towards Torquay's well-regarded grammar schools.

Absolute Sales & Lettings

Absolute Sales & Lettings Ltd, 13 Ilsham Road - TQ1 2JG

01803 214214

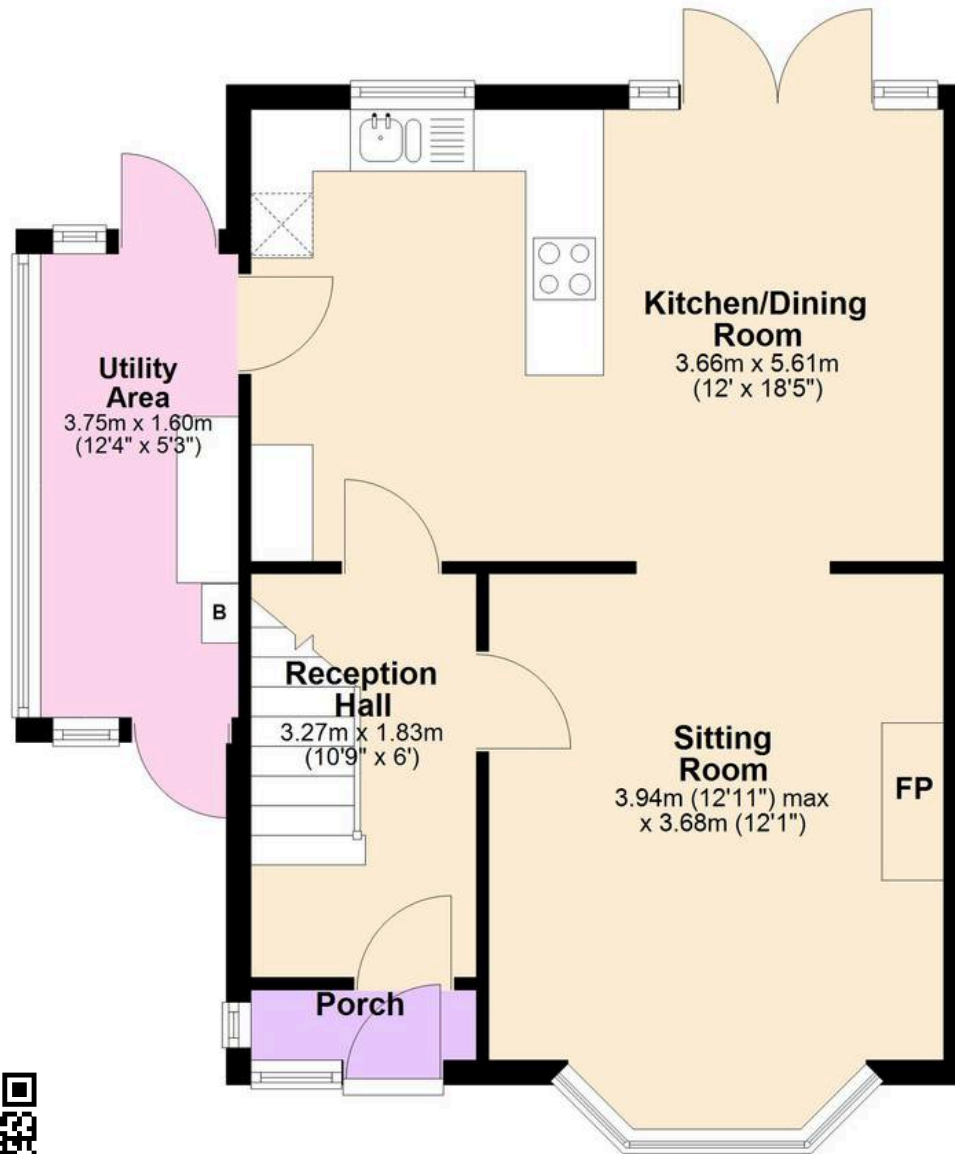
torquay@movewithabsolute.co.uk

movewithabsolute.co.uk/



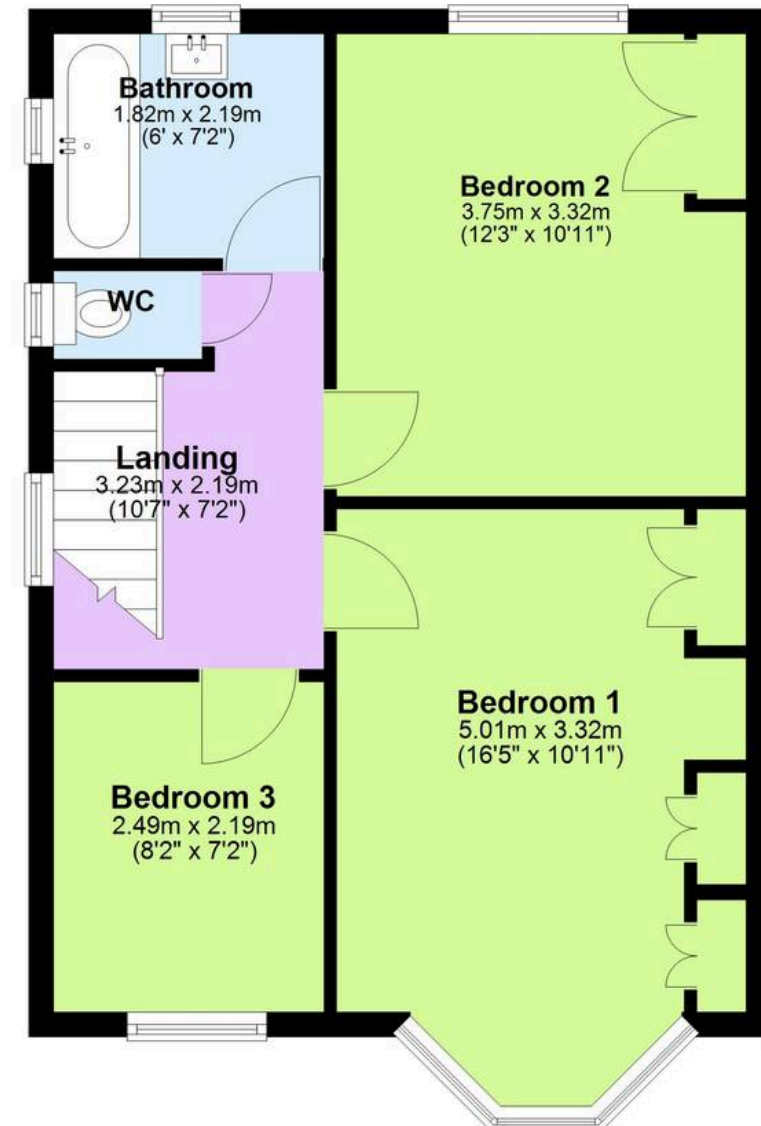
Ground Floor

Approx. 49.9 sq. metres (537.3 sq. feet)



First Floor

Approx. 44.3 sq. metres (476.6 sq. feet)



Total area: approx. 94.2 sq. metres (1013.9 sq. feet)

