



**42 The Reeves Road, Torquay – TQ2 6EG**

Offers Over **£240,000**

**ABSOLUTE**  
SALES & LETTINGS





## 42 The Reeves Road

Torquay, Torquay

Well-presented 4-bed terraced home in Chelston, offered with vacant possession. Features bay sitting room, modern kitchen/diner, loft room, enclosed garden and prime location near grammar schools and hospital.

Council Tax band: B

Tenure: Freehold

EPC Energy Efficiency Rating:

EPC Environmental Impact Rating:

- Well-presented four-bedroom terraced house
- Offered with vacant possession
- Entrance porch and reception hallway
- Bay-windowed sitting room
- Modern fitted kitchen/diner
- Three first floor bedrooms
- Family bathroom
- Loft room/bedroom four
- Enclosed terraced rear garden
- Popular location close to grammar schools and Torbay Hospital



## 42 The Reeves Road

Torquay, Torquay

Situated in the highly regarded Chelston area of Torquay, the property enjoys a convenient and popular residential setting. The location is particularly sought after due to its proximity to Torquay Grammar School for Boys and Torquay Grammar School for Girls, as well as Torbay Hospital. Local shops, transport links, and everyday amenities are within easy reach, while Torquay seafront and town centre are also accessible, making this an ideal location for families and professionals alike.

### Absolute Sales & Lettings

Absolute Sales & Lettings Ltd, 13 Ilsham Road - TQ1 2JG

01803 214214

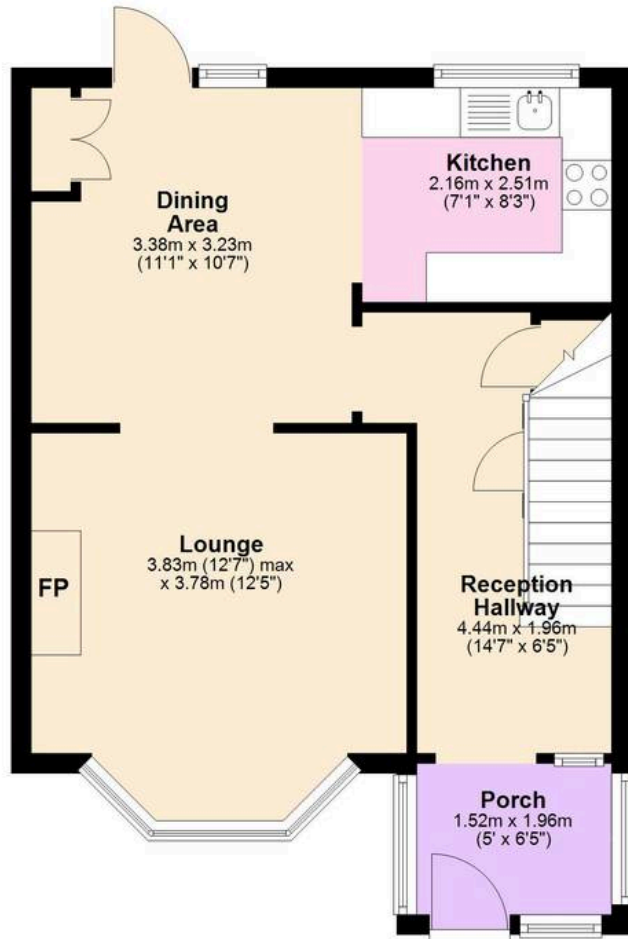
[torquay@movewithabsolute.co.uk](mailto:torquay@movewithabsolute.co.uk)

[movewithabsolute.co.uk/](http://movewithabsolute.co.uk/)



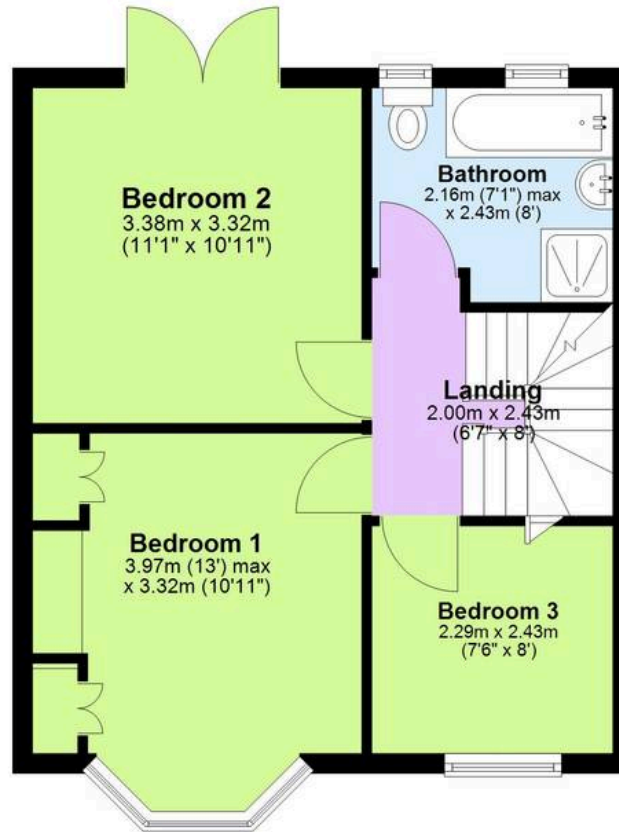
### Ground Floor

Approx. 42.8 sq. metres (460.8 sq. feet)



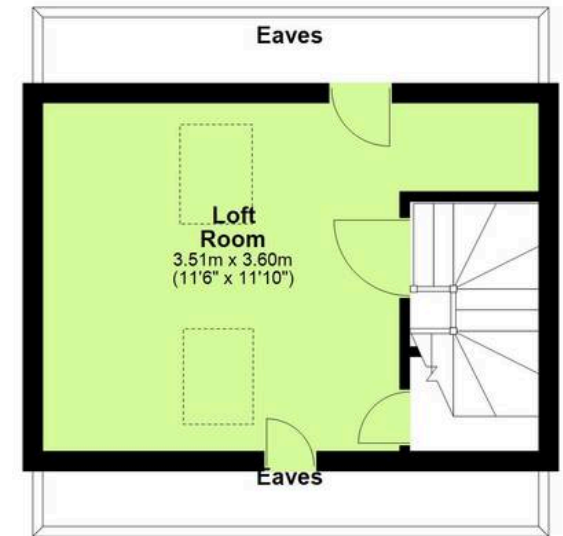
### First Floor

Approx. 39.5 sq. metres (424.7 sq. feet)



### Second Floor

Approx. 20.3 sq. metres (218.5 sq. feet)



Total area: approx. 102.6 sq. metres (1104.0 sq. feet)