



19 Headland Park Road, Paignton

Paignton

Guide Price £575,000

ABSOLUTE



19 Headland Park Road

Paignton, Paignton

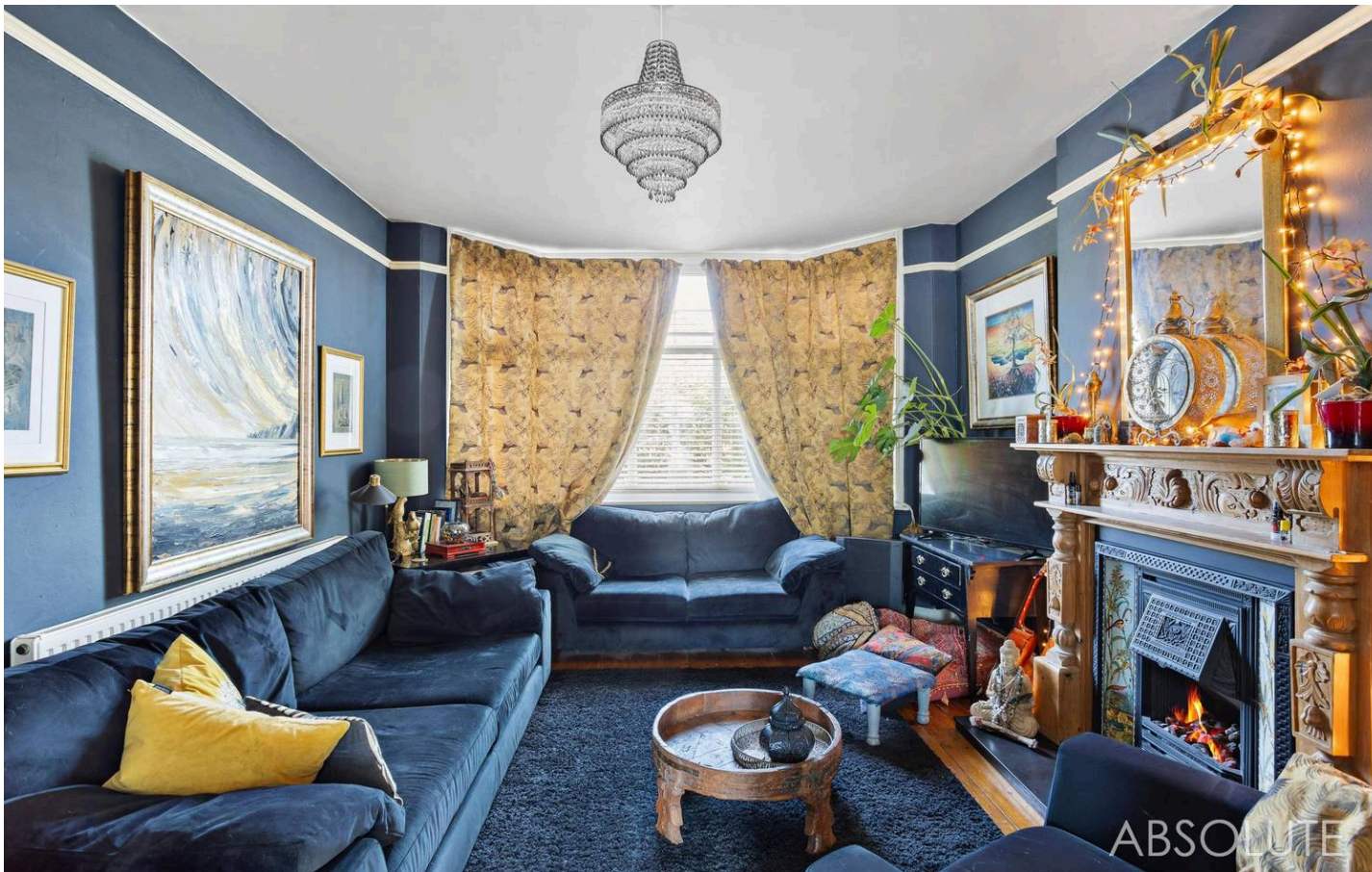
This stunning five-bedroom, bay-fronted Victorian semi-detached house offers an exceptional blend of period elegance and contemporary family living, arranged over three generous floors. The property boasts three spacious reception rooms, providing ample space for relaxation and entertaining, alongside a fabulous rear orangery that opens on to the rear garden and seamlessly opens into the well-appointed kitchen.

Also on the ground floor is a superb four piece bathroom suite.

On the first floor there are four generous double bedrooms, two with bay windows and sea views. There is also an additional modern shower room and a separate WC. A spacious utility room also offers flexible living.

On the second floor the private principal suite offers an abundance of natural light with large Velux windows enjoying the lovely sea views. The dressing area has a good range of built in wardrobes and there is also a separate bathroom/WC.

This exceptional home perfectly combines period charm with practical modern living, presenting a rare opportunity to acquire a distinctive residence in a highly sought-after location, conveniently located close to local amenities.



GARDEN

The outside space is equally impressive, with secluded wrap around gardens offering a private oasis for relaxation and recreation. Mature planting and established borders provide year-round interest, where you will also find mature apples and pear trees, while several patio areas are perfect for al fresco dining or summer gatherings. Thoughtfully designed to maximise both sun and privacy, the gardens create a welcoming environment for children and pets, as well as keen gardeners. The property's position allows for both peace and convenience, with local amenities and the coastline within easy reach.

DOUBLE GARAGE

2 Parking Spaces

The double garage has electric light and power and offers secure parking and storage. There is a door leading to the rear garden, along with a door into the hallway. There is also additional driveway parking in front of the garage.

DRIVEWAY

2 Parking Spaces

Driveway providing off road parking for two vehicles



19 Headland Park Road


Paignton, Paignton

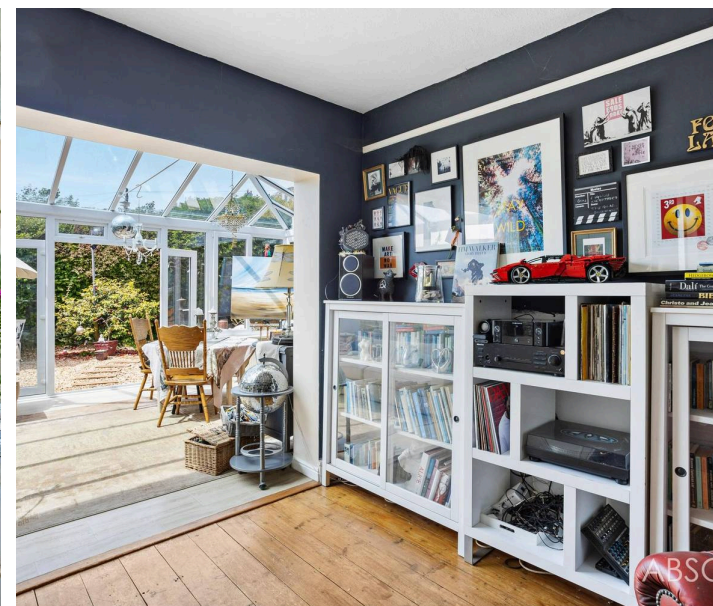
Located in the popular area of Preston. The local beach at Preston Sands is favoured by families and offers good beach facilities including cafes and bars plus a promenade and adjoining green and is only a 5 minute walk away. Preston also offers good schools and a range of shopping with supermarkets, cafes, restaurants, a medical centre and regular bus services. The stunning coastal walk linking the nearby towns of Brixham and Torquay, is a popular attraction for local walkers. There is a train station in both Paignton and Torquay, linking to the nearby town of Newton Abbot, which has a mainline station. Council Tax band: E

Tenure: Freehold

EPC Energy Efficiency Rating: D

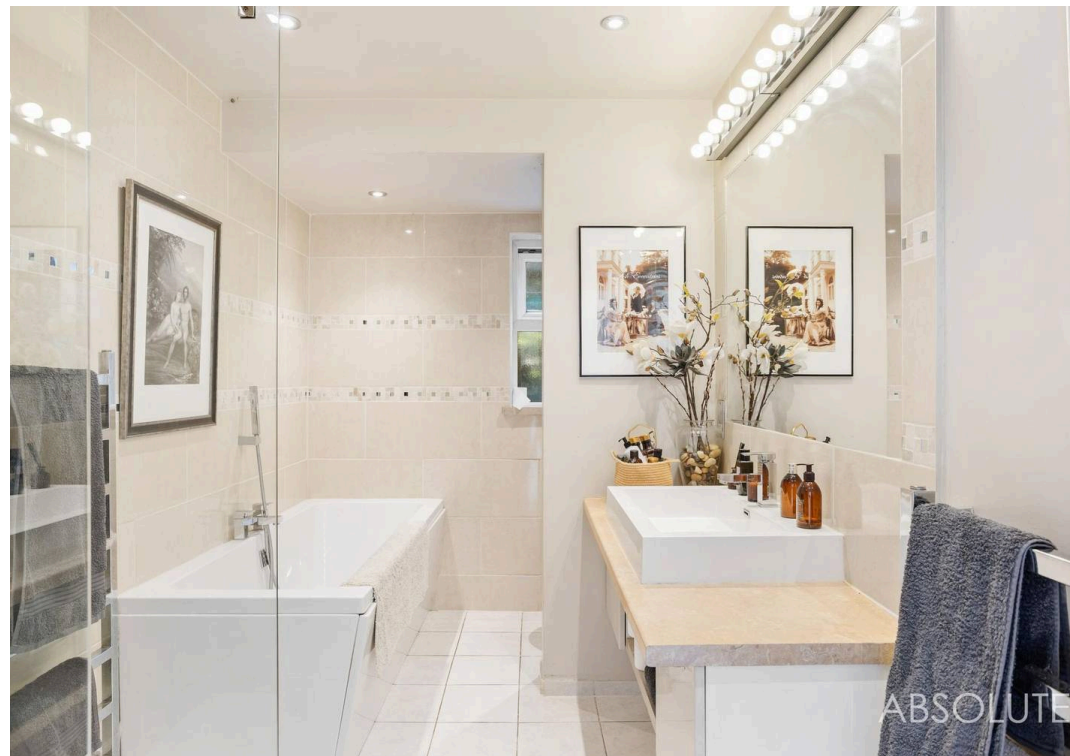
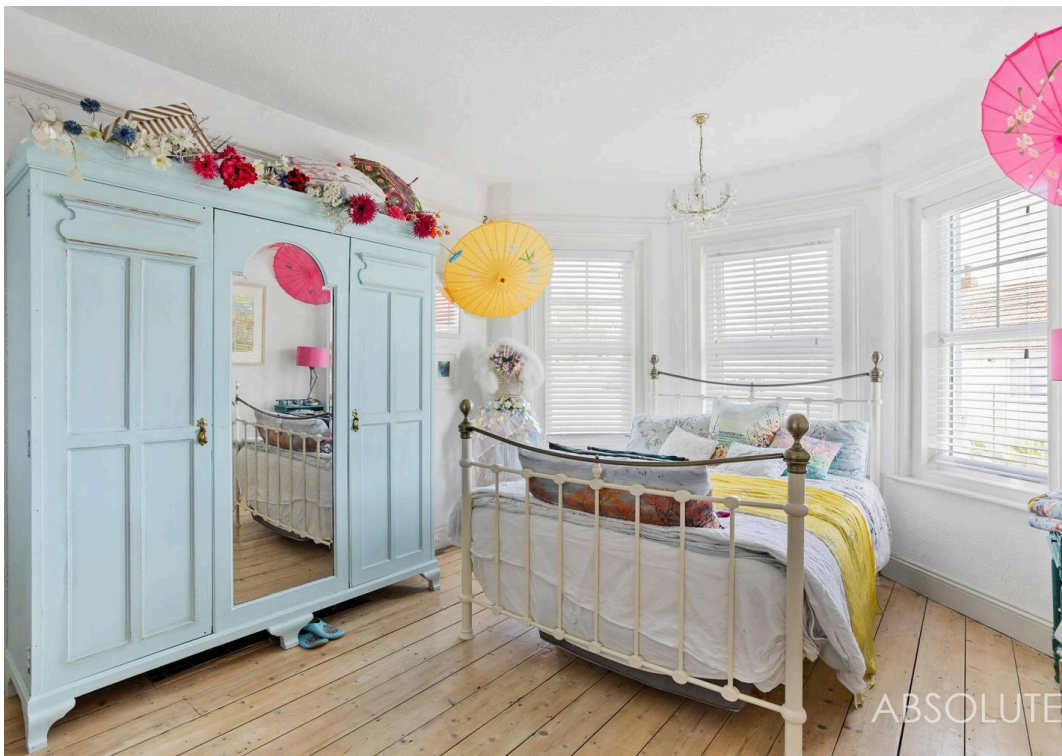
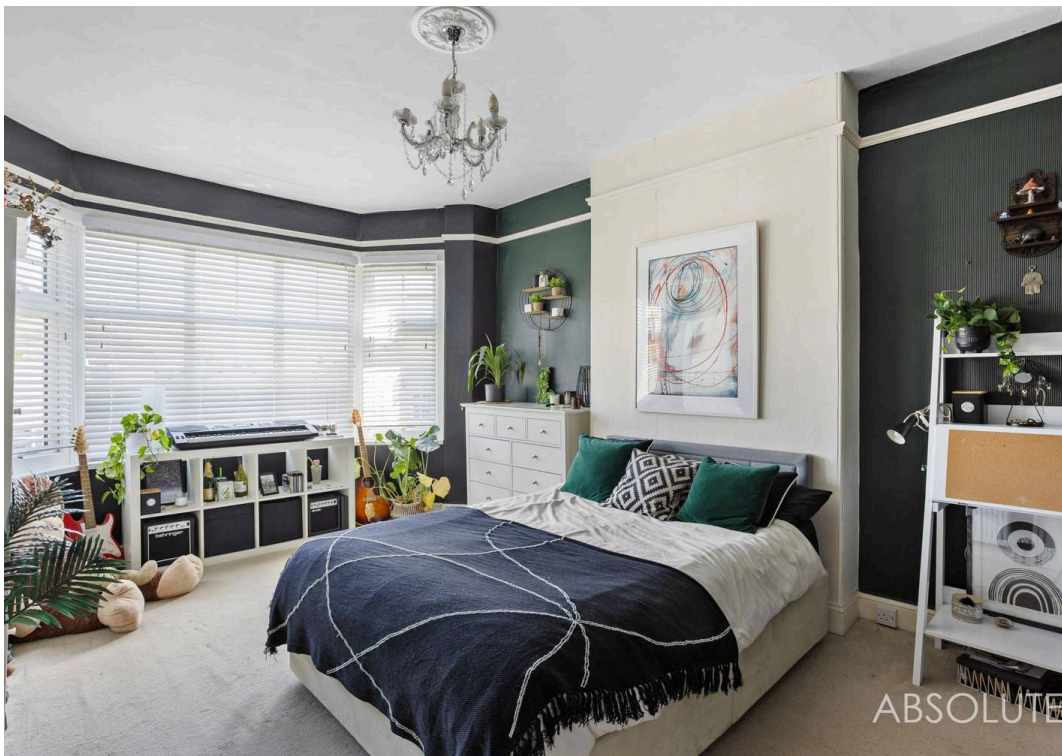
EPC Environmental Impact Rating: E

- Stunning bay fronted Victorian semi-detached house over three floors
- Three spacious reception rooms & a fabulous rear orangery opening into the kitchen
- Five double bedrooms
- 3 Stylish shower rooms/bathroom
- Separate cloakroom and utility room
- Beautiful original features including fireplaces and picture rails
- Some sea views
- Secluded wrap around gardens
-  ge and additional driveway parking





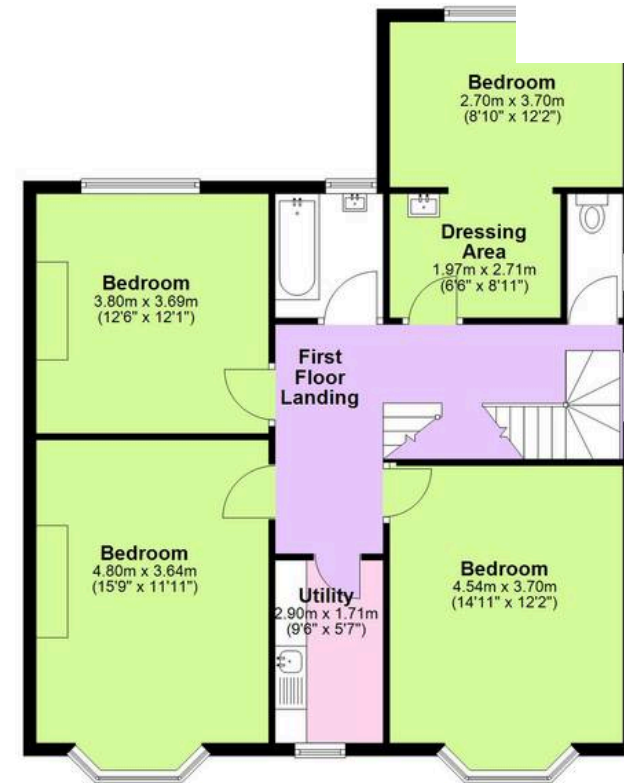
ABSOLUTE



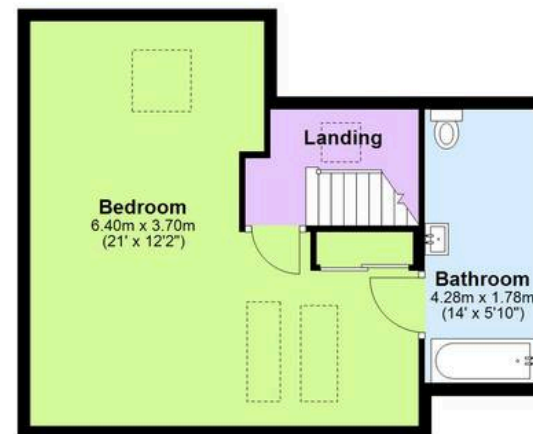
Ground Floor
Approx. 153.1 sq. metres (1648.4 sq. feet)



First Floor
Approx. 91.8 sq. metres (988.5 sq. feet)



Second Floor
Approx. 43.5 sq. metres (468.3 sq. feet)



Total area: approx. 288.5 sq. metres (3105.2 sq. feet)



Absolute Sales & Lettings

Absolute Sales & Lettings, 27 Hyde Road - TQ4 5BP

01803 890110

paignton@movewithabsolute.co.uk

<http://www.movewithabsolute.co.uk>

