



ABSOLUTE



10 Condor Drive

Torquay, Torquay

A substantial five-bedroom Bovis-built family home with generous accommodation, excellent natural light, double garage, parking and large tiered rear garden.

10 Condor Drive forms part of one of the larger Bovis-built homes within The Willows, a popular and convenient residential area of Torquay known for its practical family living, excellent access to amenities and strong commuter links. These particular homes are among the largest in the area in terms of square footage, making this a superb choice for buyers needing genuine space, flexibility and everyday practicality.

The property has been well cared for by the current owner, with windows and skylights replaced throughout within the last three years. Due to the home's elevated position and the number of double-aspect rooms, the light levels throughout are excellent, creating a bright and open feel across much of the accommodation. The heating system is controlled by Hive, adding a useful modern touch for efficient day-to-day living.

On entering the home, there is a spacious hallway with cloakroom/WC, giving a strong sense of arrival. The ground floor includes a separate dining room, perfect for family meals or entertaining, along with a large lounge featuring sliding doors opening directly onto the rear garden.

To the rear, the extended kitchen/breakfast room creates a generous and practical family space,



GARDEN

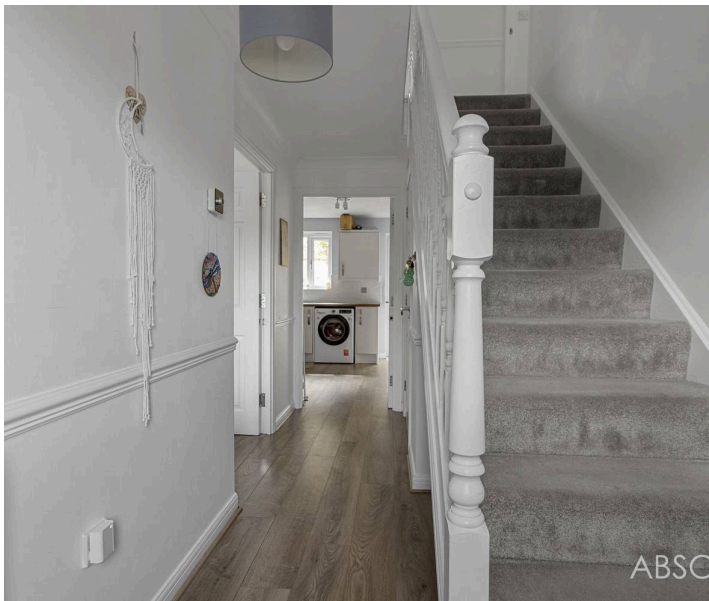
The rear garden is a standout feature, arranged over several generous tiers and designed to offer different areas for family use, relaxation and entertaining. There is direct access from the kitchen/breakfast room to the lower garden level, with steps rising to lawned areas and a large upper patio terrace enjoying sunshine, open views and a tree-lined rear boundary. The garden is fenced and gated to both sides, making it practical for children and pets.

DOUBLE GARAGE

2 Parking Spaces

DRIVEWAY

2 Parking Spaces



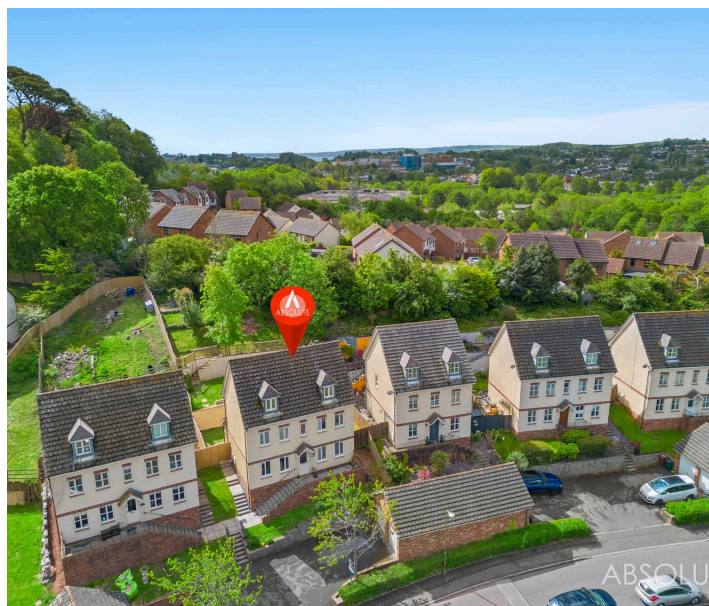
10 Condor Drive

Torquay, Torquay

The Willows is one of Torquay's most practical and popular residential areas, particularly well suited to families and commuters. The property is conveniently placed for the nearby Willows retail area and Wren Retail Park, where there is a wide range of everyday shopping and amenities, including supermarkets, national retailers, cafés, fitness facilities and useful local services. For families, the area is well positioned for a selection of local primary and secondary schools, with further schooling options available across Torquay, Shiphay and the wider Torbay area. Torbay Hospital is also nearby, making the location particularly convenient for healthcare workers or those needing regular access to medical facilities. Commuter links are a major advantage. The property gives easy access to the South Devon Highway, connecting Torquay with Newton Abbot, Exeter, Plymouth and the wider South West.

Council Tax band: F

Tenure: Freehold

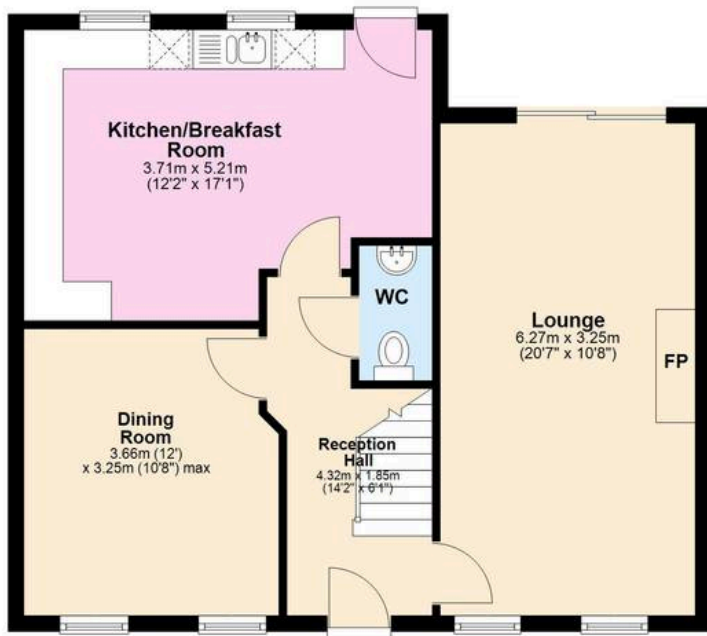




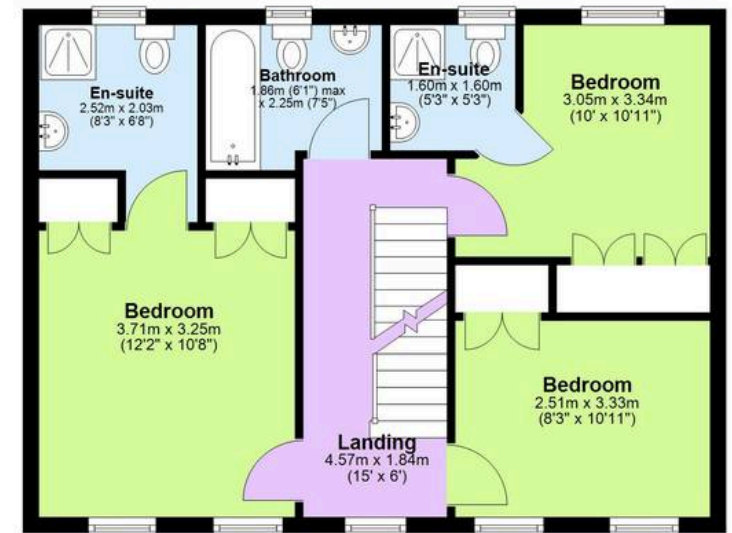
ABSOLUTE



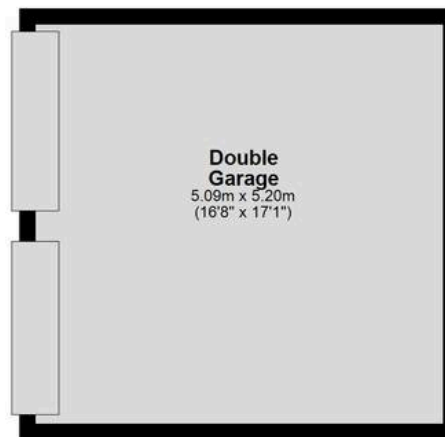
Ground Floor
Approx. 86.3 sq. metres (929.4 sq. feet)



First Floor
Approx. 54.0 sq. metres (581.6 sq. feet)



Second Floor
Approx. 43.7 sq. metres (470.8 sq. feet)



Total area: approx. 184.1 sq. metres (1981.8 sq. feet)



Absolute Sales & Lettings

Absolute Sales & Lettings Ltd, 13 Ilsham Road - TQ1 2JG

01803 214214

torquay@movewithabsolute.co.uk

movewithabsolute.co.uk/

