



**Tredegar Road**

Wilmington

DA2 7AY

**Freehold**

3 bedroom semi detached house  
Popular road  
Easy access to sought after schools and transport links  
Convenient for local shops and parks  
Internal viewing highly recommended  
2 reception rooms  
Off street parking to front





## FULL DESCRIPTION

Offered for sale is this well presented 3 bedroom semi detached house that we feel would make a great family home. The house sits in a popular road in Wilmington and offers easy access to some sought after schools, local shops, parks and transport links.

The house briefly comprises of: Entrance hall, front lounge, dining room, rear kitchen, a downstairs bathroom and then to the first floor are 3 good sized bedrooms.

Externally there is off street parking to the front and a really good sized rear garden.

This is a really well presented house and internal viewing comes highly recommended



## Directions

Closest Stations: Crayford (1.25 mi) Bexley (1.81 mi) Dartford (1.82 mi) Closest Schools: Wilmington Primary School (0.47 mi) Joydens Wood Infant School (0.5 mi) Wilmington Grammar School for Girls (0.29 mi) Leigh Academy Wilmington (0.32 mi)

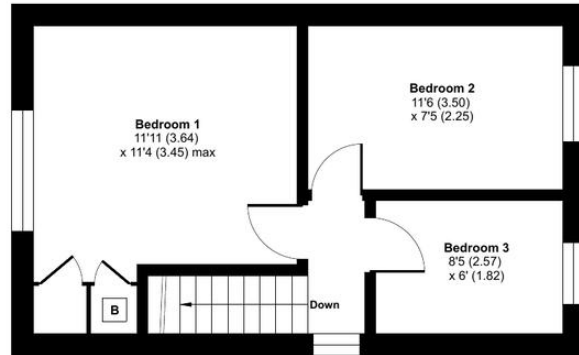


**Local Authority**  
**Council Tax Band**  
**EPC Rating**

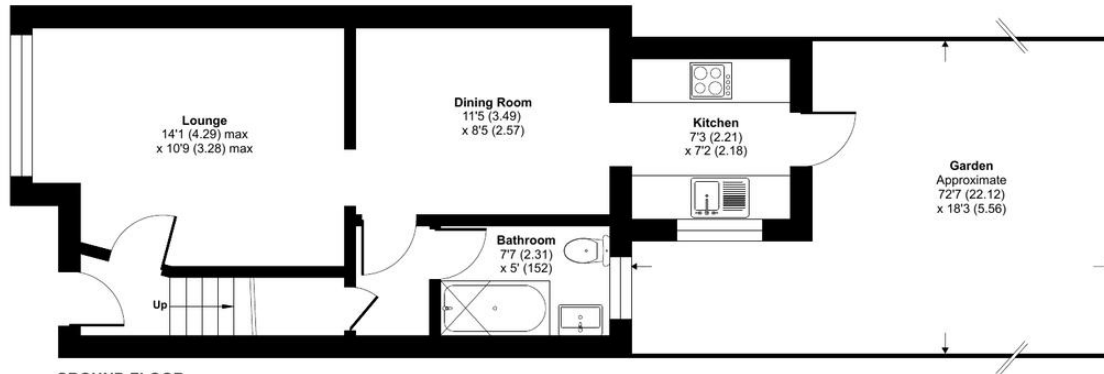
Dartford Borough Council  
C  
D

## Tredegar Road, Dartford, DA2

Approximate Area = 736 sq ft / 68.4 sq m  
For identification only - Not to scale



FIRST FLOOR



GROUND FLOOR



 Floor plan produced in accordance with RICS Property Measurement Standards incorporating International Property Measurement Standards (IPMS2 Residential). © rnhcom 2026. Produced for Drewery. REF: 1471330

**Drewery Property Consultants**  
128 Station Road  
Sidcup  
Kent  
DA15 7AF

**Contact**  
020 8269 6605  
info@drewery.co.uk  
www.drewery.co.uk

**Agents Note:** Whilst every care has been taken to prepare these particulars, they are for guidance purposes only. All measurements are approximate and are for general guidance purposes only and whilst every care has been taken to ensure their accuracy, they should not be relied upon and potential buyers/tenants are advised to recheck the measurements.