



Harborough Avenue

Sidcup
DA15 8HP

Freehold

2 bedroom end of terrace house
Chain Free
Potential to extend (STPP)
Easy access to local shops and parks
Convenient for Sidcup station and sought after schools
Downstairs bathroom
Two double bedrooms



FULL DESCRIPTION

Offered for sale is this 2 bedroom end of terrace house that sits in a popular location and offers great potential to extend (STPP).

The house offers easy access to local shops, parks, Sidcup train station and some sought after schools.

The property briefly comprises of: entrance hall, a front lounge that flows into the kitchen, downstairs bathroom and conservatory. On the first floor there are 2 double bedrooms.

Externally there is off street parking to the front, a front garden and good sized rear garden. It is offered to the market *chain free*



Directions

From our Sidcup office turn right and proceed along Station Road. At the traffic lights proceed straight across into Halfway Street. At the mini roundabout turn right into Willersley Avenue. Take the first left into Annandale Road and third right into Harborough Avenue. Closest Stations: Sidcup (0.84 mi) New Eltham (1.03 mi) Falconwood (1.20 mi) Closest Schools: Days Lane Primary School (0.18 mi) Burnt Oak Junior School (0.55 mi) Chislehurst and Sidcup Grammar School (0.85)



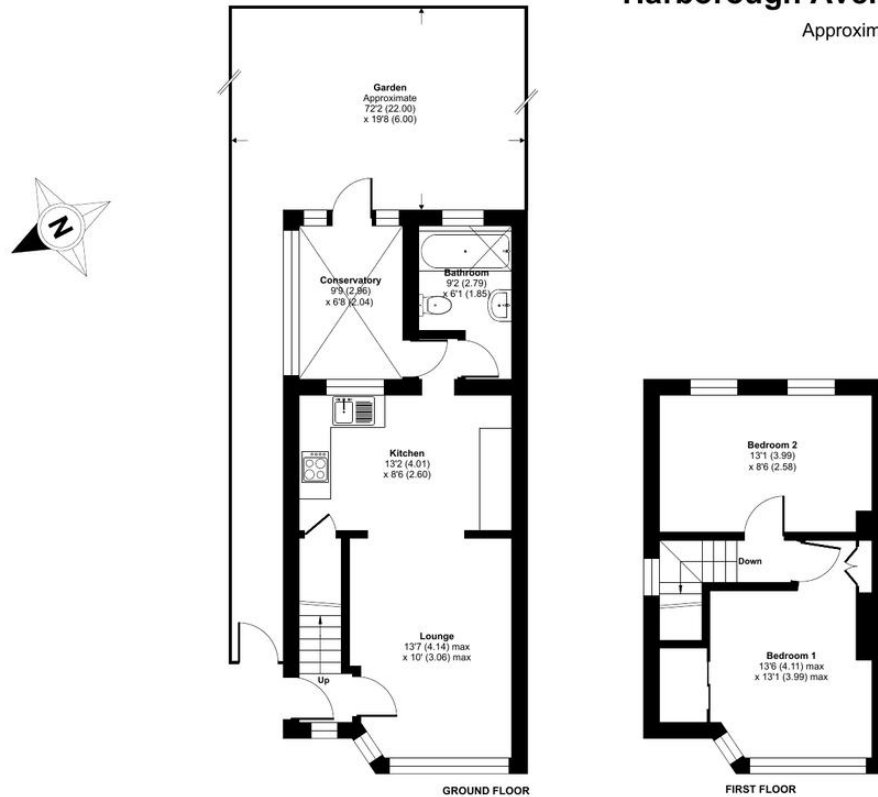
Local Authority
Council Tax Band
EPC Rating

Bexley London Borough Council
C
D

Harborough Avenue, Sidcup, DA15

Approximate Area = 708 sq ft / 65.7 sq m

*For identification only - Not to scale



 Floor plan produced in accordance with RICS Property Measurement Standards incorporating International Property Measurement Standards (IPMS2 Residential). © rnhcom 2026. Produced for Drewery. REF: 1452321

Drewery Property Consultants
128 Station Road
Sidcup
Kent
DA15 7AF

Contact
020 8269 6605
info@drewery.co.uk
www.drewery.co.uk

Agents Note: Whilst every care has been taken to prepare these particulars, they are for guidance purposes only. All measurements are approximate and are for general guidance purposes only and whilst every care has been taken to ensure their accuracy, they should not be relied upon and potential buyers/tenants are advised to recheck the measurements.