



**Forest Way**  
Sidcup  
DA15 8DR

**Freehold**

Spacious 4 bedroom semi detached house  
Requiring modernisation  
Situating in a close of just 5 houses  
Chain Free  
Quiet location  
Easy access to local shops, schools, parks and  
New Eltham station  
2 reception rooms





## FULL DESCRIPTION

Offered for sale, chain free, is this substantial four-bedroom semi-detached family home, situated in a quiet and exclusive close of just five houses. Requiring modernisation throughout, the property offers an exciting opportunity for buyers to create a superb home tailored to their own tastes and requirements.

The location provides easy access to a nearby parade of shops, well-maintained parks, highly regarded schools, and excellent transport links, including New Eltham train station.

The spacious accommodation briefly comprises a large entrance hall, front reception room, separate dining room, generous kitchen/diner, downstairs WC, and a ground-floor bathroom. To the first floor are four well-proportioned bedrooms and an additional WC.

Externally, the property benefits from a front garden, a good-sized rear garden, off-street parking, a garage, and a useful store room.

This is a rare opportunity to acquire a spacious family home in a highly desirable location. Whilst the property would benefit from updating, it offers tremendous potential.

## Directions

From our Sidcup office turn left. At the traffic lights continue straight over into Halfway Street. Continue straight across at the mini roundabout and Forest Way is the seventh turning on the left hand side. Closest Stations: New Eltham (0.62 mi) Sidcup (1.07 mi) Falconwood (1.15 mi) Closest Schools: Alderwood Primary School (0.42 mi) Dulverton Primary School (0.45 mi) Leigh Stationers' Academy (0.74 mi)



**Local Authority**  
**Council Tax Band**  
**EPC Rating**

Bexley London Borough Council

E  
D

### Forest Way, Sidcup, DA15

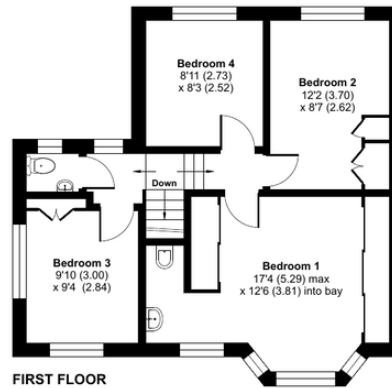
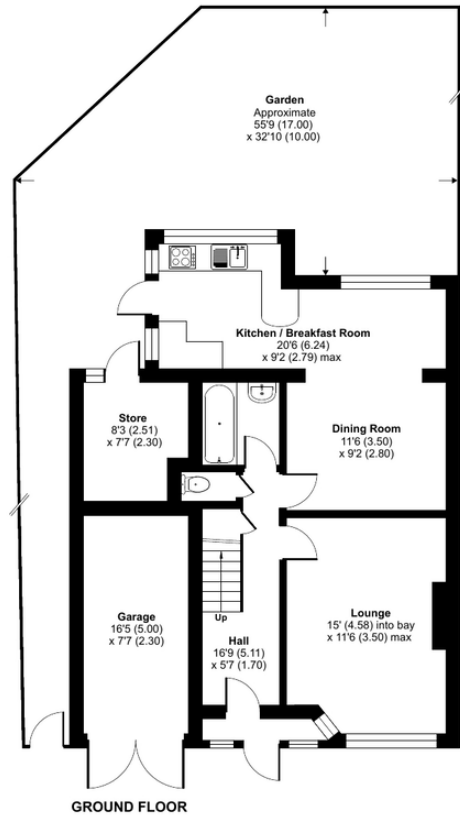
Approximate Area = 1144 sq ft / 106.3 sq m

Garage = 118 sq ft / 11 sq m

Store = 55 sq ft / 5.1 sq m

Total = 1317 sq ft / 122.3 sq m

For identification only - Not to scale



Floor plan produced in accordance with RICS Property Measurement Standards incorporating International Property Measurement Standards (IPMS2 Residential). © ntrchecom 2026. Produced for Drewery. REF: 1471282

**Drewery Property Consultants**  
128 Station Road  
Sidcup  
Kent  
DA15 7AF

**Contact**  
020 8269 6605  
info@drewery.co.uk  
www.drewery.co.uk

**Agents Note:** Whilst every care has been taken to prepare these particulars, they are for guidance purposes only. All measurements are approximate and are for general guidance purposes only and whilst every care has been taken to ensure their accuracy, they should not be relied upon and potential buyers/tenants are advised to recheck the measurements.