



Canterbury Avenue

Sidcup
DA15 9AZ

Freehold

5 bedroom semi detached chalet style house
Potential to extend (STPP)
Sought after location
Convenient for Sidcup station and sought after schools
Off street parking and detached garage
downstairs bathroom and upstairs shower room
Lounge flowing into dining room





FULL DESCRIPTION

Offered to the market is this spacious five-bedroom chalet-style home, set on a generous plot with excellent potential for extension (STPP).

The ground floor comprises an entrance hall, a lounge and dining area leading through to the rear kitchen, a fifth bedroom, and a family bathroom. To the first floor are four additional bedrooms and a shower room.

Externally, the property benefits from front and rear gardens, off-street parking, and a detached garage.

Ideally located within easy reach of Sidcup train station, local shops, parks, and highly regarded schools, this property presents a fantastic opportunity not to be missed.



Directions

From our Sidcup office. Turn right into Station Road. At the first set of traffic lights turn right into Hurst Road. Canterbury Avenue is the second turning on your right. Closest Stations: Albany Park (0.43 mi) Sidcup (0.54 mi) Bexley (1.39 mi) Closest Schools: Birkbeck Primary School (0.5 mi) Chatsworth Infant School (0.54 mi) Hurstmere School for Boys (0.2 mi) Chislehurst and Sidcup Grammar School (0.34 mi)



Local Authority
Council Tax Band
EPC Rating

Bexley London Borough Council

F
C

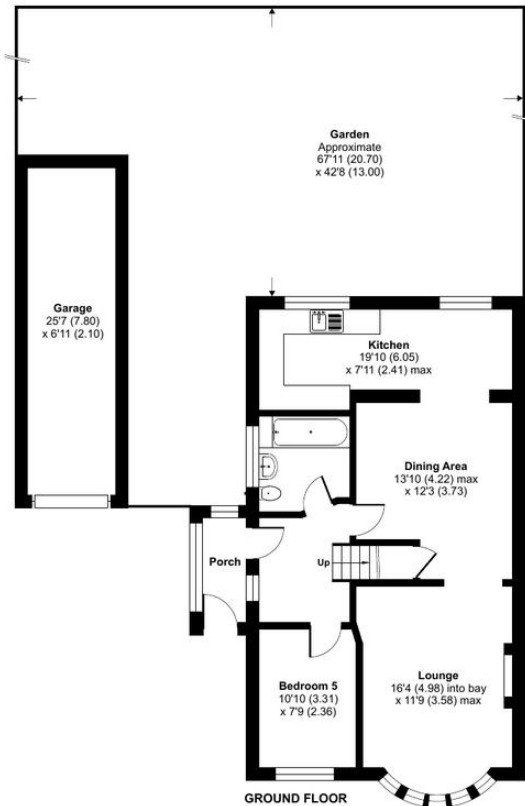
Canterbury Avenue, Sidcup, DA15

Approximate Area = 1474 sq ft / 136.9 sq m

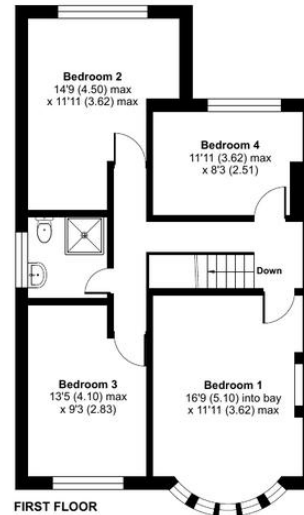
Garage = 176 sq ft / 16.3 sq m

Total = 1650 sq ft / 153.3 sq m

For identification only - Not to scale



GROUND FLOOR



FIRST FLOOR



Floor plan produced in accordance with RICS Property Measurement Standards incorporating International Property Measurement Standards (IPMS2 Residential). © rnhcom 2026.
Produced for Drewery. REF: 1407650

Drewery Property Consultants
128 Station Road
Sidcup
Kent
DA15 7AF

Contact
020 8269 6605
info@drewery.co.uk
www.drewery.co.uk

Agents Note: Whilst every care has been taken to prepare these particulars, they are for guidance purposes only. All measurements are approximate and are for general guidance purposes only and whilst every care has been taken to ensure their accuracy, they should not be relied upon and potential buyers/tenants are advised to recheck the measurements.