



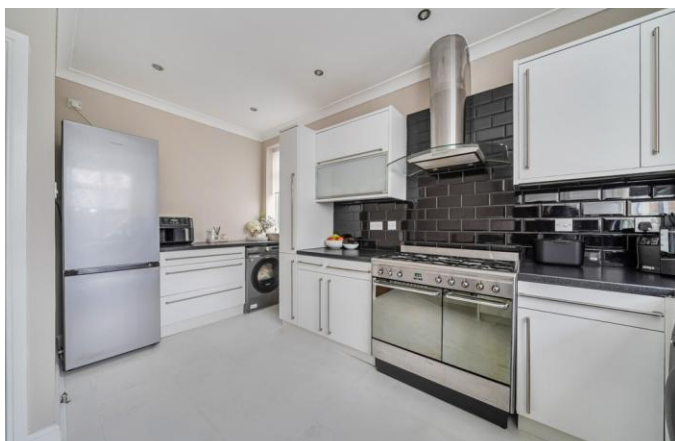
**Hurst Road**

Bexley  
DA5 3LQ

**Freehold**

Beautifully presented and extended four-bedroom chalet home  
Finished to a high standard throughout  
Off-street parking for several vehicles  
Generous rear garden with decked seating area and lawn  
Master bedroom with large en-suite bathroom  
Spacious bay-fronted lounge





## FULL DESCRIPTION

Offered to the market is this beautifully presented and thoughtfully extended four-bedroom semi detached chalet style house. Stylishly designed and finished to a high standard throughout, it provides generous living space and would make an ideal family home. The property is perfectly positioned for some of the borough's most sought-after schools, including Chislehurst and Sidcup Grammar School and Hurst Primary School, while also offering convenient access to Albany Park railway station and a range of local shops and amenities.

The accommodation briefly comprises: entrance hall, a spacious bay-fronted lounge, and a dining room with an open-plan layout flowing seamlessly into the rear extension and modern fitted kitchen. The ground floor also benefits from a cloakroom/W.C.

Upstairs, is an impressive master bedroom with a large en-suite bathroom, three further well-proportioned bedrooms, family shower room and access to the loft. Externally, the property offers off-street parking for several vehicles to the front, along with a generous rear garden featuring a decked seating area and lawn-ideal for entertaining and family enjoyment.

This is a fantastic opportunity to acquire a superb chalet home in a highly convenient and desirable location.

## Directions

From our Sidcup office turn right and proceed along Station Road, at the traffic lights turn right into Hurst Road and the property can be found shortly afterwards on the left hand side. Closest Stations: Albany Park (0.39 mi) Sidcup (0.82 mi) Bexley (1.17 mi) Closest Schools: Hurst Primary School (0.29 mi) Royal Park Primary Academy (0.56 mi) Hurstmere School (0.78 mi)





**Local Authority**  
**Council Tax Band**  
**EPC Rating**

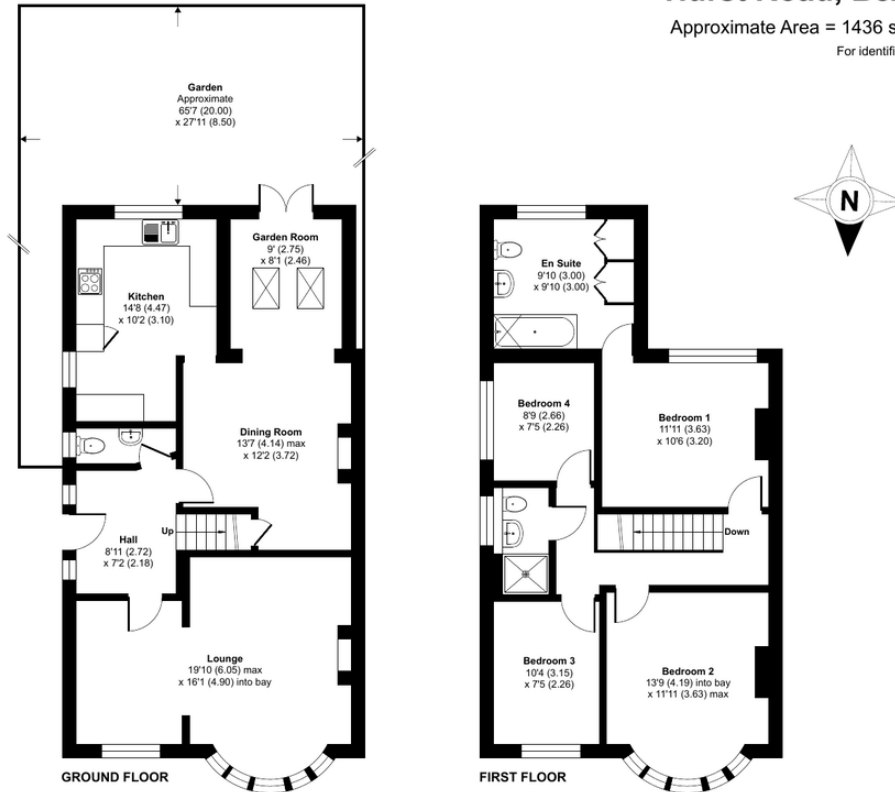
Bexley London Borough Council

E  
D

## Hurst Road, Bexley, DA5

Approximate Area = 1436 sq ft / 133.4 sq m

For identification only - Not to scale



Floor plan produced in accordance with RICS Property Measurement Standards incorporating International Property Measurement Standards (IPMS2 Residential). © rnhcom 2026.  
Produced for Drewery. REF: 1407673

**Drewery Property Consultants**  
128 Station Road  
Sidcup  
Kent  
DA15 7AF

**Contact**  
020 8269 6605  
info@drewery.co.uk  
www.drewery.co.uk

**Agents Note:** Whilst every care has been taken to prepare these particulars, they are for guidance purposes only. All measurements are approximate and are for general guidance purposes only and whilst every care has been taken to ensure their accuracy, they should not be relied upon and potential buyers/tenants are advised to recheck the measurements.